



120 ANNIVERSARY

European lighting  
**MARINER**  
since 1893



# 1893

A continuación, ofrecemos todas y cada una de las piezas que componen nuestro catálogo de productos. Hemos distribuido nuestras Lámparas por

familias y en cuatro grandes grupos, en función de sus características y estilos: **Royal Heritage, Reminiscent Collection, Eclectic Transitional y Art Gallery.** Más adelante presentaremos, también agrupadas una recopilación de nuestras piezas como **Apliques, Plafones, Lámparas de Pie y de Sobremesa.** Nuestro deseo es transmitir la belleza, lujo arte y sensibilidad que nuestros artesanos transfieren a nuestras creaciones.

On the following pages you will see the entire range of products from our extensive lighting catalogue. We have grouped our Lighting products into four large sections, responding to their characteristics and styles: **Royal Heritage, Reminiscent Collection, Eclectic Transitional and Art Gallery.** Further on, also in their own section, is a Summary of our pieces such as **Wall Brackets, Ceiling Fixtures, Torchieres and Table Lamps.** Our aim is to offer a General Lighting Catalogue that will help our customers and collaborators in their daily work, although we are aware of the difficulties of reflecting all the beauty, quality and authentic sensitivity presented by the real thing, the article itself seen in all its glory.

La calidad y belleza de los productos MARINER han sido contrastadas con gran éxito en los más diversos mercados de los cinco continentes. Su vocación exportadora quedó confirmada al poco de nacer la empresa y, ya en 1915, MARINER vendía sus productos en países de Europa y América.

Ferias como la de Milán (1927) o la de Filadelfia (1930) fueron testigos de su presencia en el exterior hace muchas décadas. El Salón de la Iluminación en París, Elektro Messehaus en Hannover, Euroluce en Milán, Herbst en Frankfurt, FINE en Beirut, las Ferias del Mueble en París y Colonia, así como las Ferias Internacionales del Mueble y la Iluminación en Valencia -éstas desde su fundación-, son muestras de la introducción de MARINER en los mercados internacionales que, en la actualidad, alcanza a más de cuarenta países.



# 2013



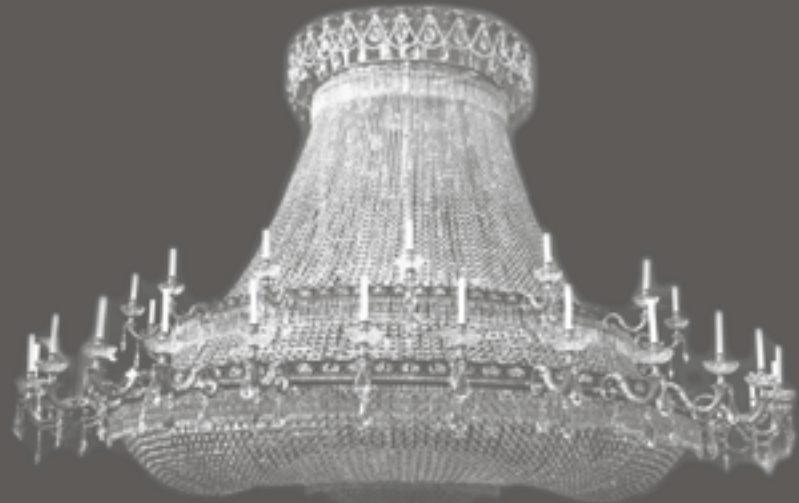
*The quality and beauty of MARINER products have been successfully tried and tested in a wide variety of markets on all five continents. The company's international profile was confirmed soon after it was founded in the 19th century, because by 1915 MARINER had already sold its products in various European countries and the Americas. Trade fairs such as Milan (1927) or Philadelphia (1930) stand witness to MARINER's*

*presence on the international market in the early 20th century. The Lighting Show in Paris, Elektro Messehaus in Hannover, Euroluce in Milan, Herbst in Frankfurt, FINE in Beirut or the Paris and Cologne Furniture Fairs, as well as the International Furniture and Lighting Fairs in Valencia, Spain -the latter since their inception- are all examples of MARINER's international profile, which today extends to over forty different countries around the world.*



Esa presencia y el reconocimiento que supone, se refleja en el diseño y creación de piezas singulares y únicas, verdaderas obras de arte. Edificios públicos y privados, hoteles, palacios, templos y teatros de los más recónditos lugares de todo el mundo, muchos de ellos de resonancia universal, albergan hoy muebles y lámparas de MARINER, como las piezas expresamente creadas para el Capitolio del Estado (Pensilvania), el Palacio Imperial (Tokio), el Patriarcado Armenio (Jerusalén), el Teatro Monumental Rebekah Harkness (Nueva York), La unión Musical (Lliria, España), el Hotel Doral Beach (Miami), el aeropuerto de Argel, la Residencia Oficial de Bata y la sala de Prensa del Aeropuerto de Malabo (Guinea Ecuatorial), la Residencia Oficial de Chechenia, las oficinas de una compañía petrolífera (Angola), el Palacio de Justicia de AbuDhabi o los Yates "Bistango" e "Integra Private Yacht".

# CREATIVITY & CONTRACT



1973  
Rebekah Harkness Theatre, New York, NY

*This experience on the market and the recognition it has brought is reflected in the design and creation of special pieces, personalized for each use. Public and private buildings, hotels, palaces, temples and theatres spread across the entire globe, many of which enjoy international fame, are homes to MARINER furniture and lamps today, such as the company's special bespoke creations for the Pennsylvania State Capitol (USA), the Imperial Palace (Tokyo), the Rebekah Harkness Monumental Theatre (New York), the Musical Union (Lliria, Spain), the Armenian Patriarch (Jerusalem), the Hotel Doral beach (Miami, USA), the Alger Airport, the Official Residence in Bata and the Press Room of Malabo Airport (Equatorial Guinea), the Official Residence in Chechenia, the Petrol Company Offices (Angola), the Courthouse in AbuDhabi or the Yachts "Bistango" and "Integra Private Yacht."*



OPERA "THAIS" - Palacio de las Artes - Valencia

## MARINER is Art

*Placido Domingo features the Opera "Thais" in Valencia (Palacio de las artes).*







Royal  
Heritage





: 2400

↑ 116cm 45,67"  
 ∅ 100cm 39,37"  
 ♀ 9(E14)

Lámpara / Chandelier  
 Acabado / Finish: O.F. (55)  
 Peso neto / Net weight: 92,00 kg/202,64 Lb

Lámpara de estilo Rococó, de gran personalidad. Una de sus características más destacadas es la exuberancia de líneas, siempre asimétricas pero siempre llenas de gracia y de un admirable equilibrio dentro de su aparente desorden. Diseñada por el escultor Caffieri, es de bronce veritable y su fabricación se hace con el método de la cera perdida, lo que hace que cada una de ellas sea una pieza única. La lámpara original se encuentra en la biblioteca Mazarino de París.

Magnificent 9 arms french Rococo chandelier has a vase-shaped shaft from which a series of curved branches of varying sizes extend. Both vase and branches are opulently decorated with asymmetrical scroll work, rocaille flowers and leaves. Created by Jacques Caffieri, french sculptor in 1751, made of gild bronze and under the method of the "lost wax" each of these chandeliers is unique. The original chandelier can be seen in Mazarino Library in Paris.

Lámpara de estilo Rococó, la vegetación, en un constante y estilizado movimiento, es su tema principal, así como igualmente es la rocalla, motivo ornamental que ya apareció durante la regencia. Es de Bronce veritable y su fabricación se realiza con el método de la cera perdida, lo que hace de cada una de ellas sea una pieza única.

Rococo chandelier with delightful floral ormolu in continuous movement as the principal decorative motive, in combination with rocaille ornament, firstly created during the regency period. Custod from brass and under the technique of the "lost wax" this model is a real masterpiece.



: 19559

↑ 134cm 52,76"  
 ∅ 136cm 53,54"  
 ♀ 12 (E14)

Lámpara / Chandelier  
 Acabado / Finish: O.F. (55)  
 Peso neto / Net weight: 107,80 kg/237,44 Lb





**: 20006**

Applique / Wall bracket  
Acabado / Finish: OF(55)  
Peso neto / Net weight: 4,41 kg/9,71 Lb

↑ 51 cm 20,08"  
→ 30 cm 11,81"  
↘ 27 cm 10,63"

Lámpara de estilo Barroco, realizada en bronce fundido a la cera perdida y acabado en oro anticuario. El motivo principal de su ornamentación es el grupo formado por cuatro querubines con trompeta, de donde salen los brazos de la lámpara. Es una joya del Barroco fabricado por Mariner desde hace más de 60 años.

A magnificent Baroque style real gold plated bronze chandelier hand made under the artisan technique by of the "lost wax" casting. The chandelier is centered by blue crystal globe surmounted by scrolling foliage, below four cherubs blowing a horn. This Baroque masterpiece is manufactured by Mariner during the last 60 years.



**: 18933**

Lámpara / Chandelier  
Acabado / Finish: O.A. (231)  
Peso neto / Net weight: 42,09 kg/92,71 Lb

↑ 94 cm 37"  
Ø 90 cm 35,43"  
⚡ 8 (E14)





Lámpara de estilo Barroco, fabricada en bronce fundido a la arena, y decorado en acabado plata vieja. Lámpara de imponente presencia, por sus considerables dimensiones y por la contundencia de los brazos y cuerpo central, decorados con pendeloques de cristal austriaco.

French Baroque, 15 candle branch old silver plated chandelier. The silver frame with exuberant cartouche and rocaille decoration dressed profusely with various Austrian shaped crystal pendants.



**: 19872**

Lámpara / Chandelier  
Acabado / Finish: Pla. Vi (56)  
Peso neto / Net weight: 100,10Kg / 220,48 Lb  
Pantalla / Shade 1629-31

↑ 115cm 45,28"  
∅ 121cm 47,64"  
⊕ 10+5 (E14)



**E**legante lámpara de estilo Louis XVI, en donde combinan de manera armónica sus brazos de bronce salomónico, la columna central de cristal de Bohemia tallado, y el entramado de cadenas de cristal austriaco.

**T**he elegant French Louis XVI style gilt bronze chandelier with 12 light branches around Bohemian chiselled crystal mount adorned with Austrian crystal garlands.



**: 19997**

↑ 144cm 56,69"  
 ∅130cm 51,18"  
 Q6+6 (E14)  
 Lámpara / Chandelier  
 Acabado / Finish: O.F. (55)  
 Peso neto / Net weight: 90 kg/198,24 Lb



**: 20023**

↑ 65 cm 25,59"  
 ↔ 41 cm 16,14"  
 ↗ 20 cm 7,87"  
 Q 2-E14  
 Aplique / Wall bracket  
 Acabado / Finish: OF(55)  
 Peso neto / Net weight: 7,40 kg/16,30 Lb  
 Material/Materials:  
 Bronce y Cristal Scholer  
 Casted Bronze & Scholer Crystal.



**: 20022**

↑ 103cm 40,55"  
 ∅97cm 38,19"  
 Q 8 (E14)  
 Lámpara / Chandelier  
 Acabado / Finish: Pla.Ant. (387)  
 Peso neto / Net weight: 32,00kg/70,48Lb  
 Material/Materials:  
 Bronce, Cristal Checo y Cristal Scholer/  
 Casted Bronze, Czech Crystal  
 & Scholer Crystal Drops





Lámpara de Estilo Imperio, de bronce decorada con cristal austriaco, es una versión de mayores dimensiones que la del modelo 18693. Por su espectacular tamaño y grandiosa apariencia, esta lámpara ha sido escogida para decorar importantes estancias en edificios tanto públicos como privados en diversos países del mundo.

Para acompañar esta colección de lámparas, Mariner creo un Farol y un aplique que podrán encontrar en la pagina 30.

**T** rue to the empire originals, this chandelier is made with the finest materials. Created with 100% Austrian crystal, this chandelier is the bigger version of the reference 18693.

The majesty and supreme quality of this chandelier reflects a sense of class and elegance of royal palaces. The satellite lantern and wall bracket have been designed by Mariner in order to complete this splendid chandelier in page 30.

**: 19889**

↑ 192cm 75,59"  
 ∅ 180cm 70,87"  
 ⚙ 18 +4 (E14)

Lámpara / Chandelier  
 Acabado / Finish: O.A. (231)  
 Peso neto / Net weight: 127,00 kg/279,74 Lb



Lámpara de estilo Imperio, de Bronce decorada con cristal austriaco, diseñada por Mariner a principios del siglo XX. La característica principal de esta, es el intrincado vestido de las tiras de cristal, sobre la estructura de bronce fundido a la cera perdida y acabado en oro anticuario.

Esta lámpara decora Palacios y residencias de diversas casas reales y primeros ministros europeos.

**H** and chased bronze and crystal chandelier in empire french style. All the crystal on this piece is Austrian. The chandelier was designed firstly in the beginnings of XX century. The main attraction of this model is line in the elaborated crystal chains, "lost wax" manufacturing technique and real gold plated final brass finish.

This is a fine chandelier from top to bottom and decorates many European manor houses and official residences.

**: 18693**

↑ 130cm 51,18"  
 ∅ 103cm 40,55"  
 ⚙ 12 (E14)

Lámpara / Chandelier  
 Acabado / Finish: O.A. (231)  
 Peso Neto/Net Weight:  
 47,40Kg/104,41Lb  
 Pantalla / Shade 1622-62



# Royal Heritage

**: 19928**

↑ 132cm 51,97"  
 ∅ 70cm 27,56"  
 ⚡ 10 (E14)

Farol / Lantern  
 Acabado / Finish: O.A. (231)  
 Peso neto / Net weight: 41,00 kg/90,31 Lb  
 Material/Materials: Bronce y cristal scholer/  
 Casted bronze & scholer crystal



**: 19929**

↑ 92cm 36,22"  
 ↔ 60cm 23,62"  
 ↗ 30cm 11,81"  
 ⚡ 6 (E14)

Applique / Wall bracket  
 Acabado / Finish: O.A. (231)  
 Peso neto / Net weight: 14,40 kg/31,72 Lb  
 Material/Materials: Bronce y Cristal Scholer  
 Casted Bronze & Scholer Crystal



Lámpara de estilo Imperio, de bronce decorada con cristal austriaco. De diseño de principio de siglo XX, se utiliza para adornar sus brazos la figura de unos cisnes, uno de los elementos más característicos de este estilo. Esta lámpara decora Palacios y residencias de diversas casas reales y primeros ministros Europeos.

True to the empire originals, this wonderful brass chandelier is fashioned and created by Mariner in the beginning of the XX century in the same manner that European artisans have used for generations. Ornated with elegant Bronze swan figures and dressed with 100% Austrian crystal this chandelier decorates the finest chateaux and palaces across Europe.



**: 18761**

↑ 115cm 45,28"  
 ∅ 116cm 45,67"  
 ⚡ 10+5+4+4 (E14)

Lámpara / Chandelier  
 Acabado / Finish: O.A. (231)  
 Peso neto / Net weight: 59,05 kg/130,07 Lb





Lámpara de marcado estilo Imperio francés. Realizada en bronce, decorada en acabado oro francés y negro, destaca en su ornamentación la figura femenina central que representa la victoria, cuyo pies descansan figuradamente sobre la bola del mundo.

*A French Empire bronze and gilt eight branch chandelier, the canopy is enriched with gilt metal open an thermion and supports the body of the chandelier which is surmounted by a tazza with neo-classical decoration. The standing bronze classical maiden which represent the victory footstepping the terrestrial globe.*

**: 650**  
 Lámpara / Chandelier  
 Acabado / Finish: O.F./NST(100)  
 Peso neto / Net weight: 23,44 kg/51,63 Lb  
 ↑ 102cm 40,16"  
 ∅ 82cm 32,28"  
 ⚡ 8 (E14)



Lámpara de estilo imperio, de bronce con chapa de metal en negro, diseñada a mediados del Siglo XX y recuperada para nuestro catalogo en el año 2002. Con decoración de marcada influencia egipcia, consigue nuevos efectos al combinar en feliz juego de contrastes, los adornos con las superficies lisas.

*A fine quality eight branch bronze and gilt empire chandelier created by Mariner in the middle of the XX century and reintroduced into our catalogue in 2002. Marked by clear Egyptian decorative influence with a bronze crown of an thermion from wich is suspended a chain of bronze elements. The main dish itself is surmounted by a bronze tazza an is decorated with acantus leaf in high relief.*

**: 19197**  
 Lámpara /Chandelier  
 Acabado / Finish: O.F./N.B(288)  
 Peso neto / Net weight: 24,78 kg/54,58 Lb  
 Pantalla / Shade 1624-94  
 ↑ 100cm 39,37"  
 ∅ 93cm 36,61"  
 ⚡ 8(E14)



**A**plique de estilo Louis XVI, de cuerpo de bronce que sujeta a su vez los brazos en forma de trompeta, adornos florales y frutales en algunos casaos (Ref.: 19230) e imágenes greco-romanas en otros (Ref.: 2531). Estos apliques decoran Palacios y Residencias de diversas casas reales y primeros ministros Europeos.

**B**eautiful bronze wall brackets Louis XVI style. The grooved dagger shaped stem is completed by trumpet light arms ornamented with leaves, fruits an some times Greek and Romans motives in chiselled and gilt bronze. These wall bracket decorated the finest residencies and Royal Palace across Europe.

**A**pliques de estilo Louis XVI, de cuerpo de bronce que sujeta a su vez los brazos en forma de trompeta, adornos florales y frutales en algunos casaos (Ref.: 19230) e imágenes greco-romanas en otros (Ref.: 2531). Estos apliques decoran Palacios y Residencias de diversas casas reales y primeros ministros Europeos.

**B**eautiful bronze wall brackets Louis XVI style. The grooved dagger shaped stem is completed by trumpet light arms ornamented with leaves, fruits an some times Greek and Romans motives in chiselled and gilt bronze. These wall bracket decorated the finest residencies and Royal Palace across Europe.



**: 19100**

↑ 67cm 26,38"  
 ← 36cm 14,17"  
 ↗ 40cm 15,75"  
 ⚡ 4 (E14)

Aplique / Wall bracket  
 Acabado / Finish: O.A.(231)  
 Peso neto / Net weight: 5,28 kg/11,63 Lb  
 Pantalla / Shade 1624-87



**: 19230**

↑ 97cm 38,19"  
 ← 40cm 15,75"  
 ↗ 20cm 7,87"  
 ⚡ 2 (E14)

Aplique / Wall bracket  
 Acabado / Finish: O.A.(231)  
 Peso neto / Net weight: 9,76 kg/21,50 Lb  
 Pantalla / Shade 1627-02



**: 2531**

↑ 55cm 21,65"  
 ← 26cm 10,24"  
 ↗ 20cm 7,87"  
 ⚡ 2 (E14)

Aplique / Wall bracket  
 Acabado / Finish: O.F. (55)  
 Peso neto / Net weight: 4,20 kg/9,25 Lb



**: 19347**

↑ 86cm 33,86"  
 ← 50cm 19,69"  
 ↗ 25cm 9,84"  
 ⚡ 2 (E14)

Aplique / Wall bracket  
 Acabado / Finish: O.F. (55)  
 Peso neto / Net weight: 7,80 kg/17,18 Lb  
 Pantalla / Shade 1627-02





**: 19880**

↑ 60cm 23,62"  
 ↔ 37cm 14,57"  
 ↗ 15cm 5,91"  
 ⚡ 2 (E14)

Aplique / Wall bracket  
 Acabado / Finish: Pla.Vi (56)  
 Peso neto / Net weight: 3,20 kg/7,05Lb  
 Material/Materials: Bronce/Casted Bronze



**: 19881**

↑ 60cm 23,62"  
 ↔ 37cm 14,57"  
 ↗ 15cm 5,91"  
 ⚡ 2 (E14)

Aplique / Wall bracket  
 Acabado / Finish: Pla.Vi (56)  
 Peso neto / Net weight: 3,20 kg/7,05 Lb  
 Material/Materials: Bronce/Casted Bronze

Apliques de estilo Louis XV, su característica más destacada es la exuberancia de líneas, siempre asimétricas, de un admirable equilibrio dentro de su aparente desorden. Su fabricación es por el método de la cera perdida, lo que hace de cada uno de ellos piezas únicas

French Louis XV style gilt bronze wall brackets with asymmetrical leafy candle-branches surmounted by scrolling foliage. These models are custed under the "lost wax" technique which, turn then into the unique and singular pieces.



**: 19084**

↑ 73cm 28,74"  
 ↔ 42cm 16,54"  
 ↗ 20cm 7,87"  
 ⚡ 5 (E14)

Aplique / Wall bracket  
 Acabado / Finish: O.F. (55)  
 Peso neto / Net weight: 7,01 kg/15,44Lb  
 Material/Materials: Bronce/Casted Bronze



**: 19085**

↑ 73cm 28,74"  
 ↔ 42cm 16,54"  
 ↗ 20cm 7,87"  
 ⚡ 5 (E14)

Aplique / Wall bracket  
 Acabado / Finish: O.F. (55)  
 Peso neto / Net weight: 7,01 kg/15,44Lb  
 Material/Materials: Bronce/Casted Bronze

Apliques de estilo Louis XV, su característica más destacada es la exuberancia de líneas, siempre asimétricas, de un admirable equilibrio dentro de su aparente desorden. Su fabricación es por el método de la cera perdida, lo que hace de cada uno de ellos piezas únicas

French Louis XV style gilt bronze wall brackets with asymmetrical leafy candle-branches surmounted by scrolling foliage. These models are custed under the "lost wax" technique which, turn then into the unique and singular pieces.





**: 20020**

Lámpara / Chandelier  
Acabado / Finish: O.F.(55)

Peso neto / Net weight: 25,40Kg/55,95Lb  
Material/Materials: Bronce y Cristal Scholer

Casted bronze & Scholer crystal  
Pantalla / Shade: 1627-54

↑ 112cm 44,09"  
Ø 109cm 42,91"  
⊕ 8+12(E14)



**: 20021**

Lámpara / Chandelier  
Acabado / Finish: O.F.(55)

Peso neto / Net weight: 52,10 kg/114,76 Lb  
Material/Materials: Bronce, Cristal Checo y Cristal Scholer

Casted bronze, Czech crystal & Scholer Crystal  
Pantalla / Shade: 1629-31

↑ 140cm 55,12"  
Ø 108cm 42,52"  
⊕ 12(E14)



**: 19986**

Lámpara / Chandelier

Acabado / Finish: O.F. (55)

Peso neto / Net weight: 86,50 kg/190,53 Lb

Material/Materials:

Bronce, cristal scholer y columna central en cristal checo  
Casted bronze, scholer crystal & central colums in czech crystal

↑ 172cm 67,72"  
∅ 126cm 49,61"  
⚡ 10+5 (E14)



**: 19895**

Lámpara / Chandelier

Acabado / Finish: O.A. (231)

Peso neto / Net weight: 64,48 kg/142,03 Lb

Material/Materials: Bronce, cristal scholer y

pantallas plisadas beige/

Casted bronze, scholer crystal & pleated beige shades

Pantalla / Shade 1627-54

↑ 130cm 51,18"  
∅ 115cm 45,28"  
⚡ 10+5 (E14)







: 19987

↑ 103cm 40,55"

⊘ 88cm 34,65"

💡 6 (E14)

Lámpara / Chandelier  
Acabado / Finish: Pla.Vi. (56)  
Peso neto / Net weight: 21,01Kg/46,28Lb  
Material/Materials: Bronce, cristal scholer,  
columna central en cristal checo y pantallas plisadas beige  
Casted bronze, scholer crystal drops,  
central colums in czech cut crystal & pleated beige shades  
Pantalla / Shade 1627-54



: 19988

↑ 85cm 33,46"

⊘ 99cm 38,98"

💡 8+4 (E14)

Lámpara / Chandelier  
Acabado / Finish: O.F. (55)  
Peso neto / Net weight: 23,80 Kg/ 52,42 Lb  
Material/Materials: Bronce, cristal scholer,  
columna central en cristal checo y pantallas plisadas beige/  
Casted bronze, scholer crystal drops,  
central colums in czech cut crystal & pleated beige shades  
Pantalla / Shade 1627-54





**: 19954**

Aplique / Wall bracket  
 Acabado / Finish: Pla.Vi./NB (455)  
 Peso neto / Net weight: 3,10 kg/6,83 Lb

Material/Materials:  
 Bronce, cristal scholer  
 y tulipas de cristal checo/  
 Casted bronze, scholer crystal &  
 shades the czech crystal

↑ 53cm 20,87"  
 → 45cm 17,72"  
 ↘ 23cm 9,06"  
 ⚡ 2 (E14)



**: 19894**

Lámpara / Chandelier  
 Acabado / Finish: Pla.Vi./NB (455)  
 Peso neto / Net weight: 85,20 kg/187,67 Lb

Material/Materials:  
 Bronce, cristal scholer y tulipas de cristal checo/  
 Casted bronze, scholer crystal & shades the czech crystal

↑ 125cm 49,21"  
 ∅ 115cm 45,28"  
 ⚡ 10 (E14)





**: 19833-1**

Lámpara / Chandelier

MADE WITH SWAROVSKI® ELEMENTS

Acabado / Finish: O.F. (55)

Peso neto / Net weight: 50,58 kg/111,41 Lb

Material/Materials: Bronce y Swarovsky elements/  
Casted bronze & Swarovsky elements

↑ 102cm 40,16"  
↻ 101cm 39,76"  
⊕ 10+8 (E14)



**: 19921**

Aplique / Wall bracket

Acabado / Finish: O.A. (231)

Peso neto / Net weight: 16,71 Kg/36,81 Lb

Material/Materials: Bronce y cristal scholer/  
Casted bronze & scholer crystal

↑ 100cm 39,37"  
↔ 64cm 25,20"  
↗ 38cm 14,96"  
⊕ 3+2+5 (E14)



**: 19893**

Lámpara / Chandelier

Acabado / Finish: O.F. (55)

Peso neto / Net weight: 165,70 Kg/364,98 Lb

Material/Materials: Bronce y cristal scholer/  
Casted bronze & scholer crystal

↑ 225cm 88,58"  
↻ 173cm 68,11"  
⊕ 27+30 (E14)





**: 19860**

Lámpara / Chandelier

Acabado / Finish: O.F. (55)

Peso neto / Net weight: 78 Kg/171,81 Lb

Material/Materials: Bronce y cristal scholer/  
Casted bronze & scholer crystal

↑ 118cm 46,46"  
∅ 71cm 27,95"  
⊕ 19 (E14)+1 (E27)

**: 19560-1**

Lámpara / Chandelier

MADE WITH SWAROVSKI® ELEMENTS

Acabado / Finish: O.F. (55)

Peso neto / Net weight: 90,36 Kg/199,03 Lb

Material/Materials: Bronce y Swarovsky elements/  
Casted bronze & Swarovsky elements

↑ 110cm 43,31"  
∅ 135cm 53,15"  
⊕ 12+18 (E14)



SWAROVSKI® es una marca registrada

MADE WITH  
SWAROVSKI  
ELEMENTS





**: 19603-1**

Plafón / Ceiling fixture  
MADE WITH SWAROVSKI® ELEMENTS  
Acabado / Finish: O.F. (55)  
Peso Neto / Net Weight: 10,60Kg/23,35Lb  
Material / Materials: Bronce y Swarovsky elements/  
Casted bronze & Swarovsky elements

↑ 46cm 18,11"  
⊘ 57cm 22,44"  
⊕ 8+4 (E14)

**: 19604-1**

Aplique / Wall bracket  
MADE WITH SWAROVSKI® ELEMENTS  
Acabado / Finish: O.F. (55)  
Peso neto / Net weight: 3,22 Kg/7,09 Lb  
Material / Materials: Bronce y Swarovsky elements/  
Casted bronze & Swarovsky elements

↑ 24cm 9,45"  
↔ 46cm 18,11"  
↗ 23cm 9,06"  
⊕ 4 (E14)



**: 19602-1**

Plafón / Ceiling fixture  
MADE WITH SWAROVSKI® ELEMENTS  
Acabado / Finish: O.F. (55)  
Peso neto / Net weight: 17,50 Kg/38,55 Lb  
Material / Materials: Bronce y Swarovsky elements/  
Casted bronze & Swarovsky elements

↑ 47cm 18,50"  
⊘ 79cm 31,10"  
⊕ 6+6 (E14)



**: 19601**

Lámpara / Chandelier  
MADE WITH SWAROVSKI® ELEMENTS  
Acabado / Finish: O.F. (55)  
Peso neto / Net weight: 48,63 Kg/107,11 Lb  
Material / Materials: Bronce y Swarovsky elements/  
Casted bronze & Swarovsky elements

↑ 91cm 35,83"  
⊘ 92cm 36,22"  
⊕ 8+4+4+4(E14)







**: 19875-1**

Lámpara / Chandelier  
Acabado / Finish: Pla.Vi. (56)  
Peso neto / Net weight: 54,80 Kg/120,70 Lb  
Material/Materials: Bronce, cristal scholer,  
columna central y tulipas de cristal checo/  
Casted bronze, scholer crystal & central columns  
and shades in czech cut crystal

↑ 107cm 42,13"  
∅ 88cm 34,65"  
⚡ 8 (E14)



Acabado/Finish: O.F. (55) y Pantalla/Shade: 1629-32



**: 19901**

Sobremesa / Table lamp  
Acabado / Finish: Pla.Vi. (56)  
Peso neto / Net weight: 6,00 Kg/13,22 Lb  
Material/Materials: Bronce, columna  
de cristal checo y pantalla fruncida plata/  
Casted bronze, columns in czech cut crystal  
& gathering silver shade  
Pantalla / Shade 1629-33

↑ 88cm 34,65"  
∅ 50cm 19,69"  
⚡ 2 (E27)

**: 19875-0**

Lámpara / Chandelier  
Acabado / Finish: O.A.(231)  
Peso neto / Net weight: 44,40 Kg/97,80 Lb  
Material/Materials: Bronce, cristal scholer  
y columna central de cristal checo/  
Casted bronze, scholer crystal &  
central columns in czech cut crystal

↑ 107cm 42,13"  
∅ 88cm 34,65"  
⚡ 8 (E14)







**: 19328**

↑ 64cm 25,20"  
↔ 47cm 18,50"  
↗ 25cm 9,84"  
⊙ 3 (E14)

Aplique / Wall bracket

Acabado / Finish: O.F. (55)

Peso neto / Net weight: 5,80 Kg/12,78 Lb

Material/Materials: Bronce y flores de cerámica

Casted Bronze & Ceramic flowers.



**: 19112**

↑ 92cm 36,22"  
⊙ 61cm 24,02"  
⊙ 10 (E14)

Lámpara / Chandelier

Acabado / Finish: O.F. (55)

Peso neto / Net weight: 20 Kg/44,05 Lb

Material/Materials: Bronce y flores de cerámica

Casted Bronze & Ceramic flowers.

Pantalla / Shade 1624-88



**19375**

↑ 70cm 27,56"  
⊙ 76cm 29,92"  
⊙ 15 (E14)

Lámpara / Chandelier

Acabado / Finish: O.F. (55)

Peso neto / Net weight: 18,00Kg / 39,65Lb

Material/Materials: Bronce y flores de cerámica/

Casted bronze & ceramic flowers/





**: 19788**

↑ 101cm 39.76"  
 ∅ 108cm 42.52"  
 ♀ 10 (E14)

Lámpara / Chandelier  
 Acabado / Finish: O.F. (55)  
 Peso neto / Net weight: 57,49 Kg/126,63 Lb  
 Material/Materials: Bronce y cristal scholer y columna central de cristal Checo/  
 Casted bronze, scholer crystal & colum in Czech cut crystal



**: 19211-1**

↑ 28cm 11.02"  
 ↔ 20cm 7.87"  
 ↗ 35cm 13.78"  
 ♀ 2 (E14)

Aplique / Wall bracket  
 Acabado / Finish: O.F. (55)  
 Peso neto / Net weight: 3,40 Kg/7,49 Lb  
 Material/Materials: Bronce y cristal scholer y tulipas de cristal Checo/  
 Casted bronze, scholer crystal & shade in Czech cut crystal



**: 19210**

↑ 24cm 9.45"  
 ∅ 42cm 16.54"  
 ♀ 6 (E14)

Plafón / Ceiling fixture  
 Acabado / Finish: O.A. (231)  
 Peso neto / Net weight: 7,20 Kg/15,86 Lb  
 Material/Materials: Bronce y cristal checo/  
 Casted bronze & czech crystal



**: 19227-1**

↑ 81cm 31.89"  
 ∅ 88cm 34.65"  
 ♀ 8 (E14)

Lámpara / Chandelier  
 Acabado / Finish: O.F. (55)  
 Peso neto / Net weight: 22,40Kg/49,34 Lb  
 Material/Materials: Bronce y cristal scholer y columna central de cristal Checo/  
 Casted bronze, scholer crystal & colum in Czech cut crystal





**: 19209-1**

↑ 73cm 28,74"  
∅ 79cm 31,10"  
♀ 9 (E14)

Lámpara / Chandelier

Acabado / Finish: O.A. (231)

Peso neto / Net weight: 20,20Kg/ 44,49Lb

Material/Materials: Bronce, cristal checo y cristal scholer/  
Casted bronze, czech crystal & scholer crystal drops





**: 19834**

↑ 80cm 31,50"  
 ∅ 89cm 35,04"  
 ⚡ 16 (E14)

Lámpara / Chandelier  
 Acabado / Finish: O.F. (55)  
 Peso neto / Net weight: 55,33 Kg/121,87 Lb  
 Material/Materials: Bronce y cristal scholer/  
 Casted bronze & scholer crystal



**: 19849**

↑ 65cm 25,59"  
 ↔ 64cm 25,20"  
 ↗ 40cm 15,75"  
 ⚡ 6 (E14)

Applique / Wall bracket  
 Acabado / Finish: O.F. (55)  
 Peso neto / Net weight: 15,80Kg / 34,80Lb  
 Material/Materials: Bronce y cristal scholer/  
 Casted bronze & austrian scholer



**: 19900**

↑ 94cm 37,01"  
 ∅ 60cm 23,62"  
 ⚡ 2 (E27)

Sobremesa / Table lamp  
 Acabado / Finish: O.F./NB (458)  
 Peso neto / Net weight: 18,10 Kg/39,87 Lb  
 Material/Materials: Bronce, cristal scholer  
 y columna y base de madera/  
 Casted bronze, scholer crystal  
 & colum & vase in wood  
 Pantalla / Shade 1629-57



**: 19879**

↑ 219cm 86,22"  
 ∅ 83cm 32,68"  
 ⚡ 10 (E14)

Pie / Foot Lamp  
 Acabado / Finish: O.F./NB (458)  
 Peso neto / Net weight: 50,00 Kg/110,13 Lb  
 Material/Materials: Bronce, cristal scholer  
 y columna y base de madera/  
 Casted bronze, scholer crystal  
 & colum & vase in wood



**: 19829**

↑ 116cm 45,67"  
 ∅ 110cm 43,31"  
 ⚡ 24+12 (E14)

Lámpara / Chandelier  
 Acabado / Finish: O.F. (55)  
 Peso neto / Net weight: 90,06 Kg/198,37 Lb  
 Material/Materials: Bronce y cristal scholer/  
 Casted bronze & scholer crystal





**: 19891**

↑ 77cm 30,31"  
↔ 28cm 11,02"  
↗ 14cm 5,51"  
⚡ 1 (E14)

Aplicque / Wall bracket  
Acabado / Finish: Pla.Vi. (56)  
Peso neto / Net weight: 2,20 Kg/4,85 Lb  
Material/Materials: Bronce y pantalla fruncida/  
Casted bronze & gathering shade  
Pantalla / Shade 1629-50



**: 19892**

↑ 110cm 43,31"  
↔ 28cm 11,02"  
↗ 14cm 5,51"  
⚡ 1 (E14)

Aplicque / Wall bracket  
Acabado / Finish: O.F. (55)  
Peso neto / Net weight: 1,80 Kg/3,96 Lb  
Material/Materials: Bronce y pantalla fruncida/  
Casted bronze & gathering shade  
Pantalla / Shade 1629-49

**: 19890**

↑ 92cm 36,22"  
⊘ 98cm 38,58"  
⚡ 8 (E14)

Lámpara / Chandelier  
Acabado / Finish: O.F. (55)  
Peso neto / Net weight: 46,63 Kg/102,71 Lb  
Material/Materials: Bronce y tulipas de cristal checo/  
Casted bronze & shades in czech crystal





**: 19887**

Sobremesa / Table lamp  
Acabado / Finish: OA/B/NB (456)  
Peso neto / Net weight: 10,70 Kg/23,57 Lb  
Material/Materials: Bronce, columna y base de madera,  
porcelana con detalles oro y pantalla plisada blanca /  
Casted bronze, colum & vase in wood,  
gold accent porcelain & pleated white shade  
Pantalla / Shade 1629-47

↑ 105cm 41,34"  
∅ 55cm 21,65"  
♀ 2 (E27)



**: 19884**

Lámpara / Chandelier  
Acabado / Finish: OA/B/NB (456)  
Peso neto / Net weight: 18,60Kg/40,97Lb  
Material/Materials: Bronce, latón  
y porcelana con detalles oro/  
Casted bronze, brass &  
gold accent porcelain

↑ 87cm 34,25"  
∅ 85cm 33,46"  
♀ 8 (E14)



**: 19884-1**

Lámpara / Chandelier  
Acabado / Finish: P.Ant/B/NB (457)  
Peso neto / Net weight: 18,60Kg/40,97 Lb  
Material/Materials: Bronce, latón,  
porcelana con detalles plata  
y pantallas fruncidas blancas con galón metálico/  
Casted bronze, brass, silver accent porcelain  
& gathering white shades with metal braid  
Pantalla / Shade 1629-46

↑ 87cm 34,25"  
∅ 85cm 33,46"  
♀ 8 (E14)





# Royal Heritage



**: 19838**

↑ 50cm 19,69"  
 ← 40cm 15,75"  
 ↗ 24cm 9,45"  
 ⚡ 2 (E14)

Applique / Wall bracket  
 MADE WITH SWAROVSKI® ELEMENTS  
 Acabado / Finish: OA/NB (288)  
 Peso neto / Net weight: 2,54 Kg/5,59 Lb  
 Material/Materials: Bronce y Swarovsky elements/  
 Casted bronze & Swarovsky elements  
 Pantalla / Shade 1627-54



**: 19876**

↑ 3cm 1,18"  
 ∅ 15cm 5,91"  
 ⚡ 1-GU10

Plafón / Ceiling fixture  
 MADE WITH SWAROVSKI® ELEMENTS  
 Acabado / Finish: DB/N (60)  
 Peso neto / Net weight: 0,90 Kg/1,98 Lb  
 Material/Materials: Bronce y Swarovsky elements/  
 Casted bronze & Swarovsky elements



**: 19828**

↑ 85 cm 33,46"  
 ∅ 90cm 35,43"  
 ⚡ 8 (E14)

Lámpara / Chandelier  
 MADE WITH SWAROVSKI® ELEMENTS  
 Acabado / Finish: OA/NB (288)  
 Peso neto / Net weight: 22,01 Kg/48,48 Lb  
 Material/Materials: Bronce y Swarovsky elements/  
 Casted bronze & Swarovsky elements  
 Pantalla / Shade 1627-54

SWAROVSKI® es una marca registrada

**: 19827**

↑ 100cm 39,37"  
 ∅ 95cm 37,40"  
 ⚡ 6 (E14)

Lámpara / Chandelier  
 Acabado / Finish: OF/INST (100)  
 Peso neto / Net weight: 35,34 Kg/77,84 Lb  
 Material/Materials: Bronce, cristal scholer y latón/  
 Casted bronze, scholer crystal & brass  
 Pantalla / Shade 1629-31







**: 19841**

↑ 49cm 19,29"  
 ∅ 64cm 25,20"  
 ⚗ 10 (E14)

Platón / Ceiling fixture  
 Acabado / Finish: Pla.Ant/NB (390)  
 Peso neto / Net weight: 12,80 Kg/28,19 Lb  
 Material/Materials: Bronce y cristal scholer/  
 Casted bronze & scholer crystal

**: 19843**

↑ 64cm 25,20"  
 ↔ 35cm 13,78"  
 ↗ 23cm 9,06"  
 ⚗ 2 (E14)

Aplique / Wall bracket  
 Acabado / Finish: Pla.Ant (387)  
 Peso neto / Net weight: 3,80 Kg/8,37 Lb  
 Material/Materials: Bronce y cristal scholer/  
 Casted bronze & scholer crystal  
 Pantalla / Shade 1629-34



**: 19842**

↑ 89cm 35,04"  
 ↔ 45cm 17,72"  
 ↗ 33cm 12,99"  
 ⚗ 5 (E14)

Aplique / Wall bracket  
 Acabado / Finish: O.A.(231)  
 Peso neto / Net weight: 12,72 Kg/28,02 Lb  
 Material/Materials: Bronce y cristal scholer/  
 Casted bronze & scholer crystal  
 Pantalla / Shade 1627-58



**: 19844**

↑ 70cm 27,56"  
 ∅ 40cm 15,75"  
 ⚗ 3 (E14)

Sobremesa / Table lamp  
 Acabado / Finish: O.A./NB (288)  
 Peso neto / Net weight: 8,70 Kg/19,16 Lb  
 Material/Materials: Bronce y cristal scholer/  
 Casted bronze & scholer crystal  
 Pantalla / Shade 1627-58



**: 19840**

↑ 107cm 42,13"  
 ∅ 102cm 40,16"  
 ⚗ 10+5+5 (E14)

Lámpara / Chandelier  
 Acabado / Finish: O.A./NB (288)  
 Peso neto / Net weight: 37,00 Kg/81,50 Lb  
 Material/Materials: Bronce y cristal scholer/  
 Casted bronze & scholer crystal  
 Pantalla / Shade 1627-58







**: 19358**

Lámpara / Chandelier  
Acabado / Finish: BR. Viejo (72)  
Peso neto / Net weight: 31,77 Kg / 69,98 Lb  
Material / Materials: Bronce y cristal checo /  
Casted bronze & czech crystal

↑ 99cm 38,98"  
∅ 90cm 35,43"  
⊗ 8 (E14)





**: 19492**

↑ 54cm 21,26"  
↔ 25cm 9,84"  
↗ 29cm 11,42"  
⚡ 2 (E14)

Aplique / Wall bracket  
Acabado / Finish: OF/INST (100)  
Peso neto / Net weight: 4,20 Kg / 9,25 Lb  
Material / Materials: Bronce, cristal italiano  
& columna central de Madera  
Casted Bronze, Italian Glass  
& Central colum in wood  
Pantalla / Shade 1627-58



**: 19453**

↑ 80cm 31,50"  
⊘ 72cm 28,35"  
⚡ 6 (E14)

Lámpara / Chandelier  
Acabado / Finish: OF/INST (100)  
Peso neto / Net weight: 8,51 Kg / 18,74 Lb  
Material / Materials: Bronce, cristal italiano  
& columna central de Madera  
Casted Bronze, Italian Glass  
& Central colum in wood  
Pantalla / Shade 1627-58



**: 19491**

↑ 84cm 33,07"  
⊘ 87cm 34,25"  
⚡ 8+4 (E14)

Lámpara / Chandelier  
Acabado / Finish: OF/INST (100)  
Peso neto / Net weight: 14,00 Kg / 30,84 Lb  
Material / Materials: Bronce, cristal italiano  
& columna central de madera  
Casted bronze, Italian glass &  
central colum in wood  
Pantalla / Shade 1627-58







**: 18430**

↑ 106cm 41,73"  
∅ 102cm 40,16"  
⊗ 12+6 (E14)

Lámpara / Chandelier  
Acabado / Finish: O.F. (55)  
Peso neto / Net weight: 38,39 Kg / 84,56 Lb  
Material/Materials: Bronce / Casted bronze



**: 18431**

↑ 83cm 32,68"  
∅ 90cm 35,43"  
⊗ 8 (E14)

Lámpara / Chandelier  
Acabado / Finish: BE (316)  
Peso neto / Net weight: 21,20 Kg / 46,70 Lb  
Material/Materials: Bronce / Casted bronze





**: 19069**

↑ 31cm 12,20"  
↔ 30cm 11,81"  
↙ 18cm 7,09"  
💡 2 (E14)

Aplicque / Wall bracket  
Acabado / Finish: OF/INST (100)  
Peso neto / Net weight: 2,30 Kg / 5,07 Lb  
Material/Materials: Bronce / Casted bronze  
Pantalla / Shade 1624-16



**: 19066**

↑ 83cm 32,68"  
⊘ 97cm 38,19"  
💡 8 (E14)

Lámpara / Chandelier  
Acabado / Finish: OF/INST (100)  
Peso neto / Net weight: 28,26 Kg / 62,25 Lb  
Material/Materials: Bronce / Casted bronze  
Pantalla / Shade 1624-16



**: 19067**

↑ 108cm 42,52"  
⊘ 108cm 42,52"  
💡 18 (E14)

Lámpara / Chandelier  
Acabado / Finish: BE (316)  
Peso neto / Net weight: 50,01 Kg / 110,15 Lb  
Material/Materials: Bronce / Casted bronze  
Pantalla / Shade 1624-16





**: 18812**

Lámpara / Chandelier  
Acabado / Finish: O.A./NB (288)  
Peso neto / Net weight: 29,01 Kg/63,90 Lb  
Material/Materials: Bronce, latón y tulipas de cristal/  
Casted bronze, brass & shades in crystal

↑ 102cm 40,16"  
∅ 96cm 37,80"  
⚡ 6 (E27)







**: 19470**

↑ 100cm 39,37"  
⊘ 90cm 35,43"  
⚡ 8 (E14)

Lámpara / Chandelier  
Acabado / Finish: OF/NST (100)  
Peso neto / Net weight: 37,60 Kg/82,82 Lb  
Material/Materials: Bronce, latón y columna central de madera/  
Casted bronze, brass & central colum in wood



**: 18555**

↑ 90cm 35,43"  
⊘ 104cm 40,94"  
⚡ 6 (E27)+2(E14)

Lámpara / Chandelier  
Acabado / Finish: O.F./NST (100)  
Peso neto / Net weight: 26,80 Kg/59,03 Lb  
Material/Materials: Bronce, latón y tulipas de cristal/  
Casted bronze, brass & shades in glass





**: 19927** ↑ 70cm 27,56"  
∅ 76cm 29,92"  
⚡ 15 (E14)

Lámpara / Chandelier  
Acabado / Finish: Pla. Vi. (56)  
Peso neto / Net weight: 16 Kg/35,24 Lb  
Material/Materials: Bronce y cristal scholer/  
Casted bronze & scholer crystal







**: 19814**

Lámpara / Chandelier  
Acabado / Finish: O.F.(55)  
Peso neto / Net weight: 25,41 Kg/55,97 Lb  
Material/Materials: Bronce y cristal veneciano/  
Casted bronze & venetian glass  
Pantalla / Shade 1627-58

↑ 80cm 31,50"  
↔ 87cm 34,25"  
⚡ 8 (E14)



**: 19815**

Aplique / Wall bracket  
Acabado / Finish: O.F.(55)  
Peso neto / Net weight: 3,58 Kg/7,89 Lb  
Material/Materials: Bronce y cristal veneciano/  
Casted bronze & venetian glass  
Pantalla / Shade 1627-58

↑ 42cm 16,54"  
↔ 40cm 15,75"  
↗ 25cm 9,84"  
⚡ 2 (E14)

**: 19813**

Lámpara / Chandelier  
Acabado / Finish: O.F.(55)  
Peso neto / Net weight: 40,31 Kg/88,79 Lb  
Material/Materials: Bronce y cristal veneciano/  
Casted bronze & venetian glass  
Pantalla / Shade 1627-58

↑ 112cm 44,09"  
↔ 110cm 43,31"  
⚡ 10+5 (E14)







: 20039

↑ 173cm 68,11"

∅ 168cm 66,14"

⊙ 20+10+5 (E14)

Lámpara / Chandelier  
Acabado / Finish: O.F.(55)  
Peso neto / Net weight: 90,00 Kg/ 198,00 Lb  
Material/Materials: Bronce y cristal veneciano/  
Casted bronze & venetian glass  
Pantalla / Shade 1627-58





Royal  
Heritage  
Venetian Glass

**: 19386-0**

↑ 51cm 20,08"  
↔ 38cm 14,96"  
↙ 20cm 7,87"  
⚡ 2 (G9)

Aplicque / Wall bracket  
Acabado / Finish: Pl.Ant.(387)  
Peso neto / Net weight: 6,80 Kg/ 14,98 Lb  
Material/Materials: Bronce y cristal veneciano/  
Casted bronze, & venetian glass



**: 19386-1**

↑ 51cm 20,08"  
↔ 38cm 14,96"  
↙ 20cm 7,87"  
⚡ 2 (G9)

Aplicque / Wall bracket  
Acabado / Finish: O.F.(55)  
Peso neto / Net weight: 6,80 Kg/ 14,98 Lb  
Material/Materials: Bronce y cristal veneciano/  
Casted bronze & venetian glass



**: 19464-1**

↑ 43cm 16,93"  
⊙ 92cm 36,22"  
⚡ 10 (E14)

Plafón / Ceiling fixture  
Acabado / Finish: O.F.(55)  
Peso neto / Net weight: 28,23kg/62,18 Lb  
Material/Materials: Bronce y cristal veneciano/  
Casted bronze & venetian glass



Acabado / Finish: Pl.Ant.(387)



**: 19387**

↑ 50cm 19,69"  
⊙ 52cm 20,47"  
⚡ 4 (E14)

Farol / Lantern  
Acabado / Finish: O.F.(55)  
Peso neto / Net weight: 11,04 Kg/24,32 Lb  
Material/Materials: Bronce y cristal veneciano/  
Casted bronze & venetian glass



**: 19385**

↑ 34cm 13,39"  
⊙ 71cm 27,95"  
⚡ 6 (G9)

Plafón / Ceiling fixture  
Acabado / Finish: Pl.Ant.(387)  
Peso neto / Net weight: 19,80Kg/ 43,61Lb  
Material/Materials: Bronce y cristal veneciano/  
Casted bronze & venetian glass





**: 19384**

Lámpara / Chandelier  
Acabado / Finish: O.F.(55)  
Peso neto / Net weight: 31,01 Kg/68,30 Lb  
Material/Materials: Bronce y cristal veneciano/  
Casted bronze & venetian glass

↑ 68cm 26,77"  
∅ 71cm 27,95"  
⚙ 6+4 (G9)



**: 19465**

Lámpara / Chandelier  
Acabado / Finish: O.F.(55)  
Peso neto / Net weight: 48,61 Kg/107,07 Lb  
Material/Materials: Bronce y cristal veneciano/  
Casted bronze & venetian glass

↑ 83cm 32,68"  
∅ 92cm 36,22"  
⚙ 10+4 (E14)





**: 20038**

↑ 240cm 94,50"  
 ∅ 180cm 70,87"  
 ⚙ 24+12+6+3 (E14)

Lámpara / Chandelier  
 Acabado / Finish: PLA.B.(04)  
 Peso neto / Net weight: 142,00 Kg/312,40Lb  
 Material/Materials: Bronce, Cristal veneciano  
 y lágrimas de cristal Italiano  
 Casted Bronze, Venetian glass  
 & Italian glass drops



**: 19800**

↑ 160cm 62,99"  
 ∅ 130cm 51,18"  
 ⚙ 12+6+3 (E14)

Lámpara / Chandelier  
 Acabado / Finish: OF(55)  
 Peso neto / Net weight: 91,76 Kg/202,11Lb  
 Material/Materials: Bronce, Cristal veneciano  
 y lágrimas de cristal Italiano  
 Casted Bronze, Venetian glass  
 & Italian glass drops  
 Pantalla /Shade: 1627-58





**: 19669**

↑ 80cm 31,50"  
 ∅ 92cm 36,22"  
 ♀ 8 (E14)

Lámpara / Chandelier  
 Acabado / Finish: O.F.(55)  
 Peso neto / Net weight: 16,40 Kg/36,12 Lb  
 Material/Materials: Bronce, Cristal veneciano  
 y lagrimas de cristal Italiano  
 Casted Bronze, Venetian glass  
 & Italian glass drops  
 Pantalla / Shade 1629-01



**: 19671**

↑ 50cm 19,69"  
 ↔ 40cm 15,75"  
 ↗ 23cm 9,06"  
 ♀ 2 (E14)

Aplique / Wall bracket  
 Acabado / Finish: O.F.(55)  
 Peso neto / Net weight: 4,40 Kg/9,69 Lb  
 Material/Materials: Bronce, Cristal veneciano  
 y lagrimas de cristal Italiano  
 Casted Bronze, Venetian glass  
 & Italian glass drops  
 Pantalla / Shade 1629-01



**: 19670**

↑ 72cm 28,35"  
 ∅ 72cm 28,35"  
 ♀ 5 (E14)

Lámpara / Chandelier  
 Acabado / Finish: CR.B/N.B.(432)  
 Peso neto / Net weight: 10,06 Kg/22,16 Lb  
 Material/Materials: Bronce, Cristal veneciano  
 y lagrimas de cristal Italiano  
 Casted Bronze, Venetian glass  
 & Italian glass drops  
 Pantalla / Shade 1629-01



Royal  
Heritage  
Venetian Glass



**: 19495-0**

↑ 35cm 13,78"  
∅ 66cm 25,98"  
⚡ 6 (E14)

Plafón / Ceiling fixture  
Acabado / Finish: Pla.Vi.(56)  
Peso neto / Net weight: 13,53 Kg/29,80 Lb  
Material/Materials: Bronce y cristal veneciano/  
Casted bronze & venetian glass



**: 19495-1**

↑ 35cm 13,78"  
∅ 66cm 25,98"  
⚡ 6 (E14)

Plafón / Ceiling fixture  
Acabado / Finish: O.F.(55)  
Peso neto / Net weight: 13,53 Kg/29,80 Lb  
Material/Materials: Bronce y cristal veneciano/  
Casted bronze & venetian glass



**: 19494-1**

↑ 74cm 29,13"  
∅ 66cm 25,98"  
⚡ 6 (E14)

Colgante / Pendant  
Acabado / Finish: O.F.(55)  
Peso neto / Net weight: 16,36 Kg/36,04 Lb  
Material/Materials: Bronce y cristal veneciano/  
Casted bronze & venetian glass



**: 19496-0**

↑ 31cm 12,20"  
↔ 32cm 12,60"  
↗ 12cm 4,72"  
⚡ 1 (E14)

Applique / Wall bracket  
Acabado / Finish: Pla.Vi.(56)  
Peso neto / Net weight: 3,99 Kg/8,79 Lb  
Material/Materials: Bronce y cristal veneciano/  
Casted bronze & venetian glass



**: 19496-1**

↑ 31cm 12,20"  
↔ 32cm 12,60"  
↗ 12cm 4,72"  
⚡ 1 (E14)

Applique / Wall bracket  
Acabado / Finish: O.F.(55)  
Peso neto / Net weight: 3,99 Kg/8,79 Lb  
Material/Materials: Bronce y cristal veneciano/  
Casted bronze & venetian glass



**: 19493-1**

↑ 73cm 28,74"  
∅ 90cm 35,43"  
⚡ 6+6 (E14)

Lámpara / Chandelier  
Acabado / Finish: O.F.(55)  
Peso neto / Net weight: 24,94 Kg/54,93 Lb  
Material/Materials: Bronce y cristal veneciano/  
Casted bronze & venetian glass



Royal  
Heritage  
Venetian Glass



**: 19615**

↑ 33cm 12,99"  
↻ 60cm 23,62"  
⚡ 6 (G9)

Plafón / Ceiling fixture  
Acabado / Finish: O.F.(55)  
Peso neto / Net weight: 9,40 Kg/20,70 Lb  
Material/Materials: Bronce y cristal veneciano/  
Casted bronze & venetian glass



**: 19648**

↑ 19cm 7,48"  
↻ 46cm 18,11"  
↗ 21cm 8,27"  
⚡ 2 (G9)

Applique / Wall bracket  
Acabado / Finish: O.F.(55)  
Peso neto / Net weight: 2,80 Kg/6,17 Lb  
Material/Materials: Bronce y cristal veneciano/  
Casted bronze & venetian glass



**: 19777**

↑ 89cm 35,04"  
↻ 109cm 42,91"  
⚡ 8+8+3 (G9)

Lámpara / Chandelier  
Acabado / Finish: O.F.(55)  
Peso neto / Net weight: 36,01 Kg/79,32 Lb  
Material/Materials: Bronce y cristal veneciano/  
Casted bronze & venetian glass



**: 19613**

↑ 78cm 30,71"  
↻ 94cm 37,01"  
⚡ 6+4+3 (G9)

Lámpara / Chandelier  
Acabado / Finish: O.F.(55)  
Peso neto / Net weight: 23,95 Kg/52,75 Lb  
Material/Materials: Bronce y cristal veneciano/  
Casted bronze & venetian glass

**: 19521**

↑ 40cm 15,75"  
↻ 24cm 9,45"  
↗ 12cm 4,72"  
⚡ 2 (G9)

Applique / Wall bracket  
Acabado / Finish: O.F.(55)  
Peso neto / Net weight: 4,01 Kg/8,83 Lb  
Material/Materials: Bronce y cristal veneciano/  
Casted bronze & venetian glass



**: 19614**

↑ 75cm 29,53"  
↻ 72cm 28,35"  
⚡ 6+3 (G9)

Colgante / Pendant  
Acabado / Finish: O.F.(55)  
Peso neto / Net weight:  
19,60 Kg/43,17 Lb  
Material/Materials: Bronce  
y cristal veneciano/  
Casted bronze & venetian glass







**: 19522-0**  
 ↑ 81cm 31,89"  
 ∅ 93cm 36,61"  
 ⚡ 6+6 (E14)

Lámpara / Chandelier  
 Acabado / Finish: O.F.(55)  
 Peso neto / Net weight: 27,01Kg/59,49Lb  
 Material/Materials: Bronce y cristal veneciano/  
 Casted bronze & venetian glass



**: 19612-1**  
 ↑ 40cm 15,75"  
 ∅ 77cm 30,31"  
 ⚡ 8 (E14)

Plafón / Ceiling fixture  
 Acabado / Finish: O.F.(55)  
 Peso neto / Net weight: 20,60Kg/45,37Lb  
 Material/Materials: Bronce y cristal veneciano/  
 Casted bronze & venetian glass

**: 19524-1**  
 ↑ 34cm 13,39"  
 ∅ 57cm 22,44"  
 ⚡ 6 (E14)

Plafón / Ceiling fixture  
 Acabado / Finish: O.F.(55)  
 Peso neto / Net weight: 12,60Kg/27,75Lb  
 Material/Materials: Bronce y cristal veneciano/  
 Casted bronze & venetian glass



**: 19572-1**  
 ↑ 24cm 9,45"  
 ↔ 41cm 16,14"  
 ↗ 21cm 8,27"  
 ⚡ 2 (E14)

Aplicado / Wall bracket  
 Acabado / Finish: O.F.(55)  
 Peso neto / Net weight: 2,88 Kg/6,34 Lb  
 Material/Materials: Bronce y cristal veneciano/  
 Casted bronze & venetian glass





**: 19705**

↑ 36cm 14,17"  
 ∅ 82cm 32,28"  
 ⚡ 6 (E14)

Plafón / Ceiling fixture  
 Acabado / Finish: AN(49)  
 Peso neto / Net weight: 24,12 Kg/53,13 Lb  
 Material/Materials: Bronce y cristal veneciano/  
 Casted bronze & venetian glass



**: 19704**

↑ 79cm 31,10"  
 ∅ 82cm 32,28"  
 ⚡ 6(E14)

Colgante / Pendant  
 Acabado / Finish: AN (49)  
 Peso neto / Net weight: 34,52 Kg/76,04 Lb  
 Material/Materials: Bronce y cristal veneciano/  
 Casted bronze & venetian glass



**: 19696**

↑ 79cm 31,10"  
 ∅ 98cm 38,58"  
 ⚡ 6(E14) + 6(E27)

Lámpara / Chandelier  
 Acabado / Finish: AN(49)  
 Peso neto / Net weight: 34,52 Kg/76,04 Lb  
 Material/Materials: Bronce y cristal veneciano/  
 Casted bronze & venetian glass





**: 19687**

↓ 95cm 37,40"  
 ↔ 70cm 27,56"  
 ↗ 70cm 27,56"  
 ⚡ 8 (E14)

Farol / Lantern  
 Acabado / Finish: O.F./NST(100)  
 Peso neto / Net weight: 38,20 Kg/84,14 Lb  
 Material/Materials: Bronce, latón y cristal/  
 Casted bronze, brass & glass



**: 19973**

↓ 114cm 44,88"  
 ∅ 50cm 19,69"  
 ⚡ 4+4 (E14)

Farol / Lantern  
 Acabado / Finish: O.F.(55)  
 Peso neto / Net weight: 22,00 Kg/48,46 Lb  
 Material/Materials: Bronce y cristal veneciano/  
 Casted bronze & venetian glass





**: 18833**

↑ 95cm 37,40"  
∅ 50cm 19,69"  
⚡ 4 (E14)

Farol / Lantern  
Acabado / Finish: O.F.(55)  
Peso neto / Net weight: 26,00 Kg/57,27 Lb  
Material/Materials: Bronce, latón y cristal/  
Casted bronze, brass & glass



**: 19930**

↑ 99cm 38,98"  
∅ 57cm 22,44"  
⚡ 6 (E14)

Farol / Lantern  
Acabado / Finish: O.F.(55)  
Peso neto / Net weight: 17,00 Kg/37,44 Lb  
Material/Materials: Bronce y cristal scholer/  
Casted bronze & scholer crystal



Royal  
Heritage  
Alabaster



**: 19848**

↑ 104cm 40,94"  
∅ 115cm 45,28"  
⚡ 16+4 (E14)  
Lámpara / Chandelier  
Acabado / Finish: Pla. Vi. (56)  
Peso neto / Net weight: 39,01Kg/85,93Lb  
Material/Materials: Bronce y alabastro/  
Casted bronze & alabaster  
Pantalla / Shade 1629-34





**: 19627**

↑ 79cm 31,10"  
⊘ 92cm 36,22"  
⚡ 8+4 (E14)

Lámpara / Chandelier  
Acabado / Finish: O.F.(55)  
Peso neto / Net weight: 34,24 Kg/75,42 Lb  
Material/Materials: Bronce y alabastro/  
Casted bronze & alabaster



**: 18529-1**

↑ 75cm 29,53"  
⊘ 86cm 33,86"  
⚡ 8+4 (E27)

Lámpara / Chandelier  
Acabado / Finish: AN.PV.(254)  
Peso neto / Net weight: 27,80Kg/ 61,23 Lb  
Material/Materials: Bronce y alabastro/  
Casted bronze & alabaster



Royal  
Heritage  
Alabaster



**: 19443**

↑ 35cm 13,78"  
↔ 21cm 8,27"  
↙ 11cm 4,33"  
⊙ 1 (E14)

Aplique / Wall bracket  
Acabado / Finish: O.F.(55)  
Peso neto / Net weight: 2,31 Kg/5,09 Lb  
Material/Materials: Bronce y alabastro/  
Casted bronze & alabaster



**: 19442**

↑ 35cm 13,78"  
⊙ 55cm 21,65"  
⊙ 6 (E14)

Plafón / Ceiling fixture  
Acabado / Finish: O.F.(55)  
Peso neto / Net weight: 10,20Kg/22,47Lb  
Material/Materials: Bronce y alabastro/  
Casted bronze & alabaster



**: 19440-1**

↑ 87cm 34,25"  
⊙ 82cm 32,28"  
⊙ 6+6 (E14)

Lámpara / Chandelier  
Acabado / Finish: O.F.(55)  
Peso neto / Net weight: 24,60Kg/54,19Lb  
Material/Materials: Bronce y alabastro/  
Casted bronze & alabaster  
Pantalla / Shade 1627-58





**: 18939**

↑ 80cm 31,50"  
∅ 51cm 20,08"  
⚡ 6 (E27)

Colgante / Pendant

Acabado / Finish: O.F.(55)

Peso neto / Net weight: 21,20Kg/46,70Lb

Material/Materials: Bronce y alabastro/  
Casted bronze & alabaster



**: 18897**

↑ 46cm 18,11"  
∅ 51cm 20,08"  
⚡ 6 (E14)

Platón / Ceiling fixture

Acabado / Finish: O.F.(55)

Peso neto / Net weight: 14,80Kg/32,60Lb

Material/Materials: Bronce y alabastro/  
Casted bronze & alabaster



**: 18898**

↑ 20cm 7,87"  
↔ 35cm 13,78"  
↙ 18cm 7,09"  
⚡ 2 (E14)

Aplicque / Wall bracket

Acabado / Finish: O.F.(55)

Peso neto / Net weight: 3,20Kg/7,05Lb

Material/Materials: Bronce y alabastro/  
Casted bronze & alabaster



**: 18896**

↑ 138cm 54,33"  
∅ 122cm 48,03"  
⚡ 12+6+6+3 (E27)

Lámpara / Chandelier

Acabado / Finish: O.F.(55)

Peso neto / Net weight: 110,01 Kg/242,31 Lb

Material/Materials: Bronce y alabastro/  
Casted bronze & alabaster





**: 18819-1**

Lámpara / Chandelier  
Acabado / Finish: AN (A9)  
Peso neto / Net weight: 31,66Kg/69,74 Lb  
Material/Materials: Bronce y alabastro/  
Casted bronze & alabaster

↑ 90cm 35,43"  
∅ 97cm 38,19"  
⚡ 8 (E27)+4 (E14)



**: 18845**

Lámpara / Chandelier  
Acabado / Finish: AN (A9)  
Peso neto / Net weight: 17,64 Kg/38,85 Lb  
Material/Materials: Bronce y alabastro/  
Casted bronze & alabaster

↑ 53cm 20,87"  
∅ 73cm 28,74"  
⚡ 6+3 (E14)





**: 18958-1**

↑ 92cm 36,22"  
⊘ 96cm 37,80"  
💡 8 (E14)+4 (E27)

Lámpara / Chandelier  
Acabado / Finish: AN (49)  
Peso neto / Net weight: 47,99 Kg/105,70 Lb  
Material/Materials: Bronce y alabastro/  
Casted bronze & alabaster



**: 18878**

↑ 69cm 27,17"  
⊘ 99cm 38,98"  
💡 8 (E27)+4(E14)

Lámpara / Chandelier  
Acabado / Finish: O.F.(55)  
Peso neto / Net weight: 39,10 Kg/86,12 Lb  
Material/Materials: Bronce y alabastro/  
Casted bronze & alabaster





**: 19011**

↑ 30cm 11,81"  
∅ 40cm 15,75"  
⚡ 3 (E14)

Plafón / Ceiling fixture  
Acabado / Finish: AN (49)  
Peso neto / Net weight: 6,20 Kg/13,66 Lb  
Material/Materials: Bronce y alabastro/  
Casted bronze & alabaster



**: 18696**

↑ 58cm 22,83"  
∅ 67cm 26,38"  
⚡ 6 (E27)+3 (E14)

Lámpara / Chandelier  
Acabado / Finish: AN.PV. (254)  
Peso neto / Net weight: 15,75Kg/34,69Lb  
Material/Materials: Bronce y alabastro/  
Casted bronze & alabaster



**: 18694**

↑ 69cm 27,17"  
∅ 50cm 19,69"  
⚡ 6 (E14)

Colgante / Pendant  
Acabado / Finish: OF.PB. (303)  
Peso neto / Net weight: 11,60 Kg/25,55 Lb  
Material/Materials: Bronce y alabastro/  
Casted bronze & alabaster



**: 18739**

↑ 15cm 5,91"  
↔ 42cm 16,54"  
↗ 17cm 6,69"  
⚡ 1 (E14)

Aplique / Wall bracket  
Acabado / Finish: OF.PB. (303)  
Peso neto / Net weight: 1,40Kg/3,08Lb  
Material/Materials: Bronce y alabastro/  
Casted bronze & alabaster



**: 18738**

↑ 40cm 15,75"  
∅ 51cm 20,08"  
⚡ 6 (E14)

Plafón / Ceiling fixture  
Acabado / Finish: OF.PB. (303)  
Peso neto / Net weight: 11,60 Kg/25,55 Lb  
Material/Materials: Bronce y alabastro/  
Casted bronze & alabaster



Royal  
Heritage  
Alabaster



**: 18156**

↑ 25cm 9,84"  
↔ 42cm 16,54"  
↗ 25cm 9,84"  
⚡ 2 (E27)

Aplique / Wall bracket  
Acabado / Finish: AN (49)  
Peso neto / Net weight: 4,80Kg/10,57Lb  
Material/Materials: Bronce y alabastro/  
Casted bronze & alabaster



**: 18155**

↑ 25cm 9,84"  
↔ 20cm 7,87"  
↗ 28cm 11,02"  
⚡ 1 (E27)

Aplique / Wall bracket  
Acabado / Finish: AN (49)  
Peso neto / Net weight: 2,33Kg/5,13Lb  
Material/Materials: Bronce y alabastro/  
Casted bronze & alabaster



**: 18079**

↑ 76 cm 29,92"  
⊙ 94cm 37,01"  
⚡ 6 (E27)+3 (E27)

Lámpara / Chandelier  
Acabado / Finish: AN (49)  
Peso neto / Net weight: 24,01 Kg/52,89 Lb  
Material/Materials: Bronce y alabastro/  
Casted bronze & alabaster



Royal  
Heritage  
Alabaster



**: 18530**

↑ 20cm 7,87"  
→ 32cm 12,60"  
↗ 16cm 6,30"  
⚡ 1 (E14)

Aplicque / Wall bracket  
Acabado / Finish: AN (49)  
Peso neto / Net weight: 1,01 Kg/2,22 Lb  
Material/Materials: Bronce y alabastro/  
Casted bronze & alabaster

**: 18531**

↑ 183cm 72,05"  
⊘ 44cm 17,32"  
⚡ 1 halog. (E27)

Pie Halógeno / Foot Lamp  
Acabado / Finish: BROX/AN (218)  
Peso neto / Net weight: 25,40 Kg/55,95 Lb  
Material/Materials: Bronce y alabastro/  
Casted bronze & alabaster



**: 18547**

↑ 52cm 20,47"  
⊘ 80cm 31,50"  
⚡ 3 (E27)+3 (E14)

Lámpara / Chandelier  
Acabado / Finish: AN (49)  
Peso neto / Net weight: 17,78 Kg/39,16 Lb  
Material/Materials: Bronce y alabastro/  
Casted bronze & alabaster



**: 18523**

↑ 43cm 16,93"  
⊘ 50cm 19,69"  
⚡ 6 (E14)

Plafón / Ceiling fixture  
Acabado / Finish: AN (49)  
Peso neto / Net weight: 10,01 Kg/22,05 Lb  
Material/Materials: Bronce y alabastro/  
Casted bronze & alabaster

**: 18522**

↑ 64cm 25,20"  
⊘ 84cm 33,07"  
⚡ 6 (E27) + 3 (E27)

Lámpara / Chandelier  
Acabado / Finish: AN (49)  
Peso neto / Net weight: 24,22 Kg/53,35 Lb  
Material/Materials: Bronce y alabastro/  
Casted bronze & alabaster





**: 19925**

↑ 83cm 32,68"  
↔ 18cm 7,09"  
↗ 23cm 9,06"  
⚡ 1 (E14)

Applique / Wall bracket  
Acabado / Finish: PLA.Vi.(56)  
Peso neto / Net weight: 2,00 Kg/4,41 Lb  
Material/Materials: Bronce y porcelana/  
Casted bronze & porcelain  
Pantalla / Shade 1629-39



**: 19897-1**

↑ 69cm 27,17"  
⊙ 82cm 32,28"  
⚡ 5 (E14)

Lámpara / Chandelier  
Acabado / Finish: PLA.Vi.(56)  
Peso neto / Net weight: 8,20Kg/18,06Lb  
Material/Materials: Bronce y porcelana/  
Casted bronze & porcelain  
Pantalla / Shade 1629-37



**: 19897**

↑ 69cm 27,17"  
⊙ 82cm 32,28"  
⚡ 5 (E14)

Lámpara / Chandelier  
Acabado / Finish: PLA.Vi.(56)  
Peso neto / Net weight: 9,20Kg/20,26Lb  
Material/Materials: Bronce y porcelana/  
Casted bronze & porcelain  
Pantalla / Shade 1629-41



**: 19898-1**

↑ 195cm 76,77"  
⊙ 90cm 35,43"  
⚡ 5 (E14)

Pie / Foot Lamp  
Acabado / Finish: PLA.Vi.(56)  
Peso neto / Net weight: 40,70 Kg/89,65 Lb  
Material/Materials: Bronce y porcelana/  
Casted bronze & porcelain  
Pantalla / Shade 1629-41





**: 19896**  
 Lampara / Chandelier  
 Acabado / Finish: PLA.Vi.(56)  
 Peso neto / Net weight: 17,20 Kg/37,89 Lb  
 Material/Materials: Bronce y porcelana/  
 Casted bronze & porcelain  
 Pantalla / Shade 1629-37

↑ 88cm 34,65"  
 ∅ 86cm 33,86"  
 ⚡ 6 (E14)



**: 19898**  
 Pie / Foot Lamp  
 Acabado / Finish: PLA.Vi.(56)  
 Peso neto / Net weight: 43,70 Kg/96,26 Lb  
 Material/Materials: Bronce y porcelana/  
 Casted bronze & porcelain  
 Pantalla / Shade 1629-53

↑ 195cm 76,77"  
 ∅ 90cm 35,43"  
 ⚡ 5 (E14)



**: 19899**  
 Sobremesa / Table lamp  
 Acabado / Finish: PLA.Vi.(56)  
 Peso neto / Net weight: 4,63 Kg/10,20 Lb  
 Material/Materials: Bronce y porcelana/  
 Casted bronze & porcelain  
 Pantalla / Shade 1629-33

↑ 101cm 39,76"  
 ∅ 50cm 19,69"  
 ⚡ 2 (E27)





GGallery





**: 20007**

↑ 100cm 39,37"  
 ∅ 98cm 38,58"  
 ♀ 9(E14)  
 Colgante / Pendant  
 Acabado / Finish: Pla. Ant (387)  
 Peso neto / Net weight: 37,79 Kg/83,24 Lb  
 Material/Materials:  
 Bronce, latón y Cristal Veneciano/  
 Casted bronze, Brass & Venetian Glass



**: 20009**

↑ 41cm 16,14"  
 ↔ 28cm 11,02"  
 ↗ 14cm 5,51"  
 ♀ 1 (E14)  
 Aplique / Wall bracket  
 Acabado / Finish: PL.ANT (387)  
 Peso neto / Net weight: 3,94 Kg/8,68 Lb  
 Material/Materials: Cristal Veneciano y Latón/  
 Venetian Glass & Brass



**: 20008**

↑ 45cm 17,72"  
 ∅ 98cm 38,58"  
 ♀ 9 (E14)  
 Plafón / Ceiling fixture  
 Acabado / Finish: PLA.ANT (387)  
 Peso neto / Net weight: 34,80kg/76,65 Lb  
 Material / Materials:  
 Bronce, Latón y Cristal Veneciano  
 / Casted Bronze, Brass & Venetian Glass



**: 20030**

↑ 26cm 10,24"  
 ∅ 65cm 25,59"  
 ♀ 5 (E14)  
 Plafón / Ceiling fixture  
 Acabado / Finish: PLA.ANT (387)  
 Peso neto / Net weight: 17,00Kg/37,44Lb  
 Material / Materials:  
 Bronce, Latón y Cristal Veneciano  
 / Casted Bronze, Brass & Venetian Glass





**: 20010**

Lámpara / Chandelier  
 Acabado / Finish: PLA.ANT. (387)  
 Peso neto / Net weight: 50,05 Kg/110,24 Lb  
 Material / Materials:  
 Bronce y tulipas de cristal checo  
 / Casted Bronze & shades in Czech Crystal

↑ 120cm 47,24"  
 ∅ 122cm 48,03"  
 ♀ 9(E14)



**: 20013**

Plafón / Ceiling fixture  
 Acabado / Finish: CR.B. (420)  
 Peso neto / Net weight: 13,40 Kg/29,52 Lb  
 Material / Materials:  
 Bronce, Latón y Cristal Veneciano  
 / Casted Bronze, Brass & Venetian Glass

↑ 26cm 10,24"  
 ∅ 65cm 25,59"  
 ♀ 6(E14)



**: 20011**

Colgante / Pendant  
 Acabado / Finish: CR.B. (420)  
 Peso neto / Net weight: 37,70 Kg/83,04 Lb  
 Material / Materials:  
 Bronce, Latón y Cristal Veneciano  
 / Casted Bronze, Brass & Venetian Glass

↑ 86cm 33,86"  
 ∅ 92cm 36,22"  
 ♀ 6(E27)



**: 20012**

Plafón / Ceiling fixture  
 Acabado / Finish: CR.B. (420)  
 Peso neto / Net weight: 28,00 Kg/61,67 Lb  
 Material / Materials:  
 Bronce, Latón y Cristal Veneciano  
 / Casted Bronze, Brass & Venetian Glass

↑ 31cm 12,20"  
 ∅ 92cm 36,22"  
 ♀ 6(E27)





**: 20014**  
 Colgante / Pendant  
 Acabado / Finish: CR.B. (420)  
 Peso neto / Net weight: 27,50 Kg/60,57 Lb  
 Material / Materials:  
 Lágrimas de cristal scholer,  
 Latón y Cristal Veneciano  
 / scholer Crystal Drops  
 Brass & Venetian Glass

↑ 98cm 38,58"  
 ∅ 68cm 26,77"  
 ⚡ 4+4(E14)



**: 20015**  
 Aplique / Wall bracket  
 Acabado / Finish: CR.B. (420)  
 Peso neto / Net weight: 5,60Kg/12,33Lb  
 Material / Materials:  
 Lágrimas de cristal Austriaco,  
 Latón y Cristal Veneciano  
 / Austrian Crystal Drops  
 Brass & Venetian Glass

↑ 44cm 17,32"  
 ↔ 46cm 18,11"  
 ↗ 26cm 10,24"  
 ⚡ 2(E14)



**: 20016**  
 Lámpara / Chandelier  
 Acabado / Finish: PLA.B. (04)  
 Peso neto / Net weight: 63,58Kg/140,04Lb  
 Material / Materials:  
 Bronce y Cristal checo  
 / Casted Bronze & Czech Crystal

↑ 158cm 62,20"  
 ∅ 103cm 40,55"  
 ⚡ 9+10+5(E14)+1(E27)



**: 20016-1**  
 Lámpara / Chandelier  
 Acabado / Finish: PLA.B. (04)  
 Peso neto / Net weight: 71,23Kg/156,89Kg  
 Material / Materials:  
 Bronce y Cristal checo  
 / Casted Bronze & Czech Crystal

↑ 158cm 62,20"  
 ∅ 113cm 44,49"  
 ⚡ 9+10+5(E14)+1(E27)





**: 20037-1**

Lámpara / Chandelier

Acabado / Finish: PLA.B. (04)

Peso neto / Net weight: 135,00Kg/297,00Lb

Material / Materials:

Bronce y Cristal checo

/ Casted Bronze & Czech Crystal

↑ 210cm 82,68"

∅ 150cm 59,05"

⊕ 15+10+5+17(E14)





**: 20028-1**

Lámpara / Chandelier  
 Acabado / Finish: PLA.B. (04)  
 Peso neto / Net weight: 44,09Kg/97,11Lb  
 Material / Materials:  
 Bronce y Cristal checo /  
 Casted Bronze & Czech Crystal

↑ 138cm 54,33"  
 ∅ 103cm 40,55"  
 ⚡ 8+6(E14)+1(E27)



**: 20029-1**

Aplique / Wall bracket  
 Acabado / Finish: OF. (55)  
 Peso neto / Net weight: 13,20Kg/29,07Lb  
 Material / Materials:  
 Bronce y Cristal Checo /  
 Casted Bronze & Czech Crystal

↑ 88cm 34,65"  
 ↔ 60cm 23,62"  
 ↗ 35cm 13,78"  
 ⚡ 3+3(E14)



**: 20028**

Lámpara / Chandelier  
 Acabado / Finish: PLA.B. (04)  
 Peso neto / Net weight: 40,00Kg/88,11Lb  
 Material / Materials:  
 Bronce y Cristal checo /  
 Casted Bronze & Czech Crystal

↑ 138cm 54,33"  
 ∅ 103cm 40,55"  
 ⚡ 8+6(E14)+1(E27)





**: 20017-1**

Lámpara / Chandelier  
 Acabado / Finish: PLA, ANT. (387)  
 Peso neto / Net weight: 66,66 Kg/146,83Lb  
 Material / Materials:  
 Bronce y Cristal Checo  
 / Casted Bronze & Czech Crystal  
 Pantalla / Shade: 1629-31

↑ 126cm 49,61"  
 ∅ 105cm 41,34"  
 ♀ 10+5(E14)



**: 20017**

Lámpara / Chandelier  
 Acabado / Finish: PLA, ANT. (387)  
 Peso neto / Net weight: 59,01kg/129,98Lb  
 Material / Materials:  
 Bronce y Cristal Checo  
 / Casted Bronze & Czech Crystal  
 Pantalla / Shade: 1629-31

↑ 126cm 49,61"  
 ∅ 102cm 40,16"  
 ♀ 10+5(E14)



**: 20018**

Lámpara / Chandelier  
 Acabado / Finish: O.A. (231)  
 Peso neto / Net weight: 23,92Kg/52,69Lb  
 Material / Materials:  
 Bronce y Cristal Checo  
 / Casted Bronze & Czech Crystal  
 Pantalla / Shade: 1629-31

↑ 88cm 34,65"  
 ∅ 87cm 34,25"  
 ♀ 8(E14)



**: 20018-1**

Lámpara / Chandelier  
 Acabado / Finish: O.A. (231)  
 Peso neto / Net weight: 28,00Kg/61,67Lb  
 Material / Materials:  
 Bronce y Cristal Checo  
 / Casted Bronze & Czech Crystal

↑ 88cm 34,65"  
 ∅ 91cm 35,83"  
 ♀ 8(E14)





**: 20019**

Aplique / Wall bracket  
 Acabado / Finish: PLA.ANT.(387)  
 Peso neto / Net weight: 5,20Kg/11,45Lb  
 Material / Materials: Bronce/Casted bronze  
 Pantalla / Shade: 1629-31

↑ 54cm 21,26"  
 ↔ 47cm 18,50"  
 ↗ 26cm 10,24"  
 ⚡ 2(E14)



**: 20019-1**

Aplique / Wall bracket  
 Acabado / Finish: PLA.ANT.(387)  
 Peso neto / Net weight: 7,10Kg/15,64Lb  
 Material / Materials: Bronce y cristal/  
 Casted bronze & glass

↑ 54cm 21,26"  
 ↔ 51cm 20,08"  
 ↗ 28cm 11,02"  
 ⚡ 2(E14)

**: 20031**  
 Colgante / Pendant  
 Acabado / Finish: NI.B.(516)  
 Peso neto / Net weight: 27,50Kg / 60,57 Lb  
 Material / Materials:  
 Estructura de Latón y Cristal Checo  
 / Structure in Brass & Czech Glass

↑ 89cm 35,04"  
 ∅ 66cm 25,98"  
 ⚡ 6+6(E14)



**: 20032**

Aplique / Wall bracket  
 Acabado / Finish: NI.B.(516)  
 Peso neto / Net weight: 4,10Kg / 9,03 Lb  
 Material / Materials: Estructura de latón y cristal checo/  
 Structure in brass & czech crystal

↑ 85 cm 33,46"  
 ↔ 37 cm 14,57"  
 ↗ 15 cm 5,91"  
 ⚡ 3 (E14)





**: 20034**

Colgante / Pendant

Acabado / Finish: PLA.B. (04)

Peso neto / Net weight: 35Kg/77,09 Lb

Material / Materials:

Estructura de latón, Cristal Veneciano

y lágrimas en Cristal scholer/

Structure in Brass, Venetian Glass

& scholer Crystal Drops

↓ 83cm 32,68"

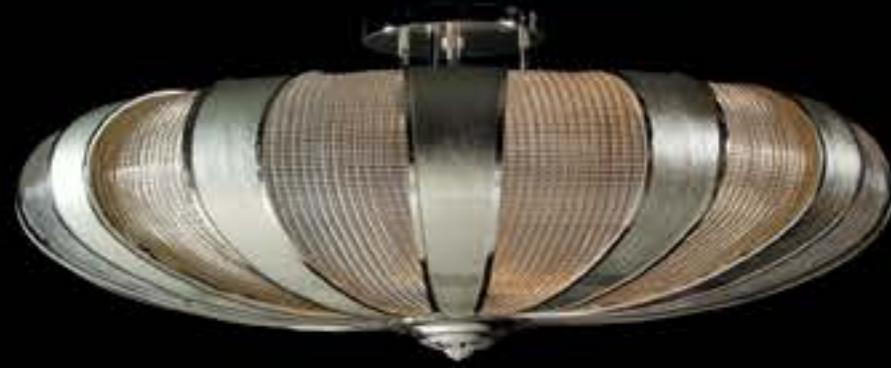
⊙ 89cm 35,04"

⚡ 10 (E14)





# Gallery



**: 20005** ↑ 60cm 23,62"  
 ∅ 146cm 57,48"  
 ⚡ 14 (E14)

Plafón / Ceiling fixture  
 Acabado / Finish: Pl.Ant (387)  
 Peso neto / Net weight: 135,00 Kg/297,36 Lb  
 Material/Materials: Bronce y cristal veneciano/  
 Casted bronze & venetian glass

**: 19980** ↑ 40cm 15,75"  
 ∅ 90cm 35,43"  
 ⚡ 10 (E14)

Plafón / Ceiling fixture  
 Acabado / Finish: Pl.Ant (387)  
 Peso neto / Net weight: 43,15 Kg/95,04 Lb  
 Material/Materials: Bronce y cristal veneciano/  
 Casted bronze & venetian glass



**: 19998** ↑ 141cm 55,51"  
 ∅ 146cm 57,48"  
 ⚡ 14 (E14)

Colgante / Pendant  
 Acabado / Finish: O.A. (231)  
 Peso neto / Net weight: 147,00 Kg/323,79 Lb  
 Material/Materials: Bronce y cristal veneciano/  
 Casted bronze & venetian glass



**: 19979** ↑ 88cm 34,65"  
 ∅ 91cm 35,83"  
 ⚡ 10 (E14)

Colgante / Pendant  
 Acabado / Finish: Pl.Ant (387)  
 Peso neto / Net weight: 47,00 Kg/103,52 Lb  
 Material/Materials: Bronce y cristal veneciano/  
 Casted bronze & venetian glass

**: 19999** ↑ 104cm 40,94"  
 ∅ 50cm 19,69"  
 ⚡ 4 (E14) + 4 (E14)

Farol / Lantern  
 Acabado / Finish: Pl.Ant (387)  
 Peso neto / Net weight: 34,40 Kg/75,77 Lb  
 Material/Materials: Bronce y cristal veneciano/  
 Casted bronze & venetian glass



**: 20001** ↑ 53cm 20,87"  
 ↔ 34cm 13,39"  
 ↗ 17cm 6,69"  
 ⚡ 2 (E14)

Aplique / Wall bracket  
 Acabado / Finish: O.A. (231)  
 Peso neto / Net weight: 5,60 Kg/12,33 Lb  
 Material/Materials: Bronce y cristal veneciano/  
 Casted bronze & venetian glass







**: 19962**

Colgante / Pendant

Acabado / Finish: O.A. (231)

Peso neto / Net weight: 45,00 Kg/99,12 Lb

Material/Materials: Bronce y cristal veneciano/  
Casted bronze & venetian glass

↑ 83cm 32,68"  
Ø 90cm 35,43"  
⊙ 12+6 (E27)







**: 19964**

↑ 55cm 21,65"  
 ∅ 90cm 35,43"  
 ⚡ 12+6 (E27)  
 Plafón / Ceiling fixture  
 Acabado / Finish: O.A. (231)  
 Peso neto / Net weight: 40,20Kg/88,55Lb  
 Material/Materials: Bronce y cristal veneciano/  
 Casted bronze & venetian glass



**: 19963**

↑ 49cm 19,29"  
 ∅ 76cm 29,92"  
 ⚡ 8+4 (E27)  
 Plafón / Ceiling fixture  
 Acabado / Finish: Pl.Ant (387)  
 Peso neto / Net weight: 28,00 Kg/61,67 Lb  
 Material/Materials: Bronce y cristal veneciano/  
 Casted bronze & venetian glass



**: 19965**

↑ 77cm 30,31"  
 ∅ 76cm 29,92"  
 ⚡ 8+4 (E27)  
 Colgante / Pendant  
 Acabado / Finish: Pl.Ant (387)  
 Peso neto / Net weight: 28,00 Kg/61,67 Lb  
 Material/Materials: Bronce y cristal veneciano/  
 Casted bronze & venetian glass





**: 19950**

Lámpara / Chandelier  
Acabado / Finish: P.L.A.B. (04)  
Peso neto / Net weight: 53,01 Kg / 116,76 Lb  
Material / Materials: Bronce, cristal checo  
y lágrimas de cristal scholer/  
Casted bronze, czech crystal & Scholer crystal Drops

↑ 105cm 41,34"  
∅ 106cm 41,73"  
⚡ 18 (E14)



# Gallery



**: 19951**

↑ 92cm 36,22"  
 ∅ 50cm 19,69"  
 ♀ 2 (E27)

Sobremesa / Table lamp  
 Acabado / Finish: Pl.Ant (387)  
 Peso neto / Net weight: 10,30 Kg/22,69 Lb  
 Material/Materials: Bronce y cristal checo/  
 Casted bronze & czech crystal  
 Pantalla / Shade 1629-33



**: 19968**

↑ 54cm 21,26"  
 ↔ 14cm 5,51"  
 ↗ 20cm 7,87"  
 ♀ 1 (E14)

Aplicue / Wall bracket  
 Acabado / Finish: PL.A.B. (04)  
 Peso neto / Net weight: 3,40 Kg/7,49 Lb  
 Material/Materials: Bronce y cristal checo/  
 Casted bronze & czech crystal



**: 19995**

↑ 30cm 11,81"  
 ↔ 22cm 8,66"  
 ↗ 15cm 5,91"  
 ♀ 2 (E14)

Pantalla / Shade 1629-76  
 Acabado / Finish: O.A. (231)

Aplicue / Wall bracket  
 Acabado / Finish: PL.A.B. (04)  
 Peso neto / Net weight: 1,60 Kg/3,52 Lb  
 Material/Materials: Bronce y cristal checo/  
 Casted bronze & czech crystal



**: 19960**

↑ 92cm 36,22"  
 ∅ 94cm 37,01"  
 ♀ 8 (E14)

Lámpara / Chandelier  
 Acabado / Finish: PL.A.B. (04)  
 Peso neto / Net weight: 30,00 Kg/66,08 Lb  
 Material/Materials: Bronce, cristal checo  
 y lágrimas de cristal scholer/  
 Casted bronze, czech crystal & Scholer crystal Drops



**: 19940**

↑ 79 cm 31,10"  
 ∅ 89 cm 35,04"  
 ⚡ 12 (E14)

Lámpara / Chandelier  
 Acabado / Finish: PLA.B. (04)  
 Peso neto / Net weight: 33,00 Kg/72,69 Lb  
 Material/ Materials:  
 Bronce, Latón y Cristal scholer  
 Casted Bronze, Brass & scholer Crystal  
 Pantallas/Shade: 1629-68

**: 19943**

↑ 33cm 12,99"  
 ∅ 65cm 25,59"  
 ⚡ 6 (E14)

Plafón / Ceiling fixture  
 Acabado / Finish: O.A. (231)  
 Peso neto / Net weight: 6,80 Kg/14,98 Lb  
 Material/ Materials:  
 Bronce, Latón y Cristal scholer  
 Casted Bronze, Brass & scholer Crystal

Acabado / Finish: O.A. (231)  
 Pantallas/Shade: 1629-68

**: 19971**

↑ 120cm 47,24"  
 ∅ 118cm 46,46"  
 ⚡ 12+6(E 14)

Lámpara / Chandelier  
 Acabado / Finish: O.A. (231)  
 Peso neto / Net weight: 65,00 Kg/143,17 Lb  
 Material/ Materials:  
 Bronce, Latón y Cristal scholer  
 Casted Bronze, Brass & scholer Crystal  
 Pantalla / Shade 1629-79

**: 19955**

↑ 53cm 20,87"  
 ↔ 36cm 14,17"  
 ↗ 18cm 7,09"  
 ⚡ 1 (E14)

Aplicador / Wall bracket  
 Acabado / Finish: PLA.B. (04)  
 Peso neto / Net weight: 6,50 Kg/14,32 Lb  
 Material/ Materials:  
 Bronce, Latón y Cristal scholer  
 Casted Bronze, Brass & scholer Crystal

**: 19941**

↑ 33cm 12,99"  
 ∅ 86cm 33,86"  
 ⚡ 8 (E14)

Plafón / Ceiling fixture  
 Acabado / Finish: PLA.B. (04)  
 Peso neto / Net weight: 24,00 Kg/52,86 Lb  
 Material/ Materials:  
 Bronce, Latón y Cristal scholer  
 Casted Bronze, Brass & scholer Crystal

**: 19942**

↑ 90cm 35,43"  
 ∅ 86cm 33,86"  
 ⚡ 8 (E14)

Colgante / Pendant  
 Acabado / Finish: O.A. (231)  
 Peso neto / Net weight: 41,80 Kg/92,07 Lb  
 Material/ Materials:  
 Bronce, Latón y Cristal scholer  
 Casted Bronze, Brass & scholer Crystal

Acabado / Finish: PLA.B. (04)





**: 20000**

Farol / Lantern  
Acabado / Finish: PLA.ANT. (387)  
Peso neto / Net weight: 10,80 Kg/23,79 Lb  
Material/Materials: Bronce y latón/  
Casted bronze & brass

↑ 81cm 31,89"  
∅ 40cm 15,75"  
⚡ 5 (E14)



**: 19972**

Farol / Lantern  
Acabado / Finish: PLA.B. (04)  
Peso neto / Net weight: 24,00 Kg/52,86 Lb  
Material/Materials: Bronce, latón y cristal/  
Casted bronze, brass & glass

↑ 91cm 35,83"  
∅ 47cm 18,50"  
⚡ 4 (E14)



**: 19949**

Colgante / Pendant  
Acabado / Finish: CR.B. (420)  
Peso neto / Net weight: 33,41 Kg/73,59 Lb  
Material/Materials: Latón y cristal veneciano/  
Brass & venetian glass

↑ 96cm 37,80"  
∅ 82cm 32,28"  
⚡ 11 (E14)



**C**ristal veneciano pintado blanco al horno, fabricado a la Piastra.

**V**enetian white coloured glass oven dried and made to the Piastra process.

**C**ristal veneciano transparente arenado, fabricado a la Piastra.

**V**enetian transparent sanded glass, made to the Piastra process.

**: 19959-0**

Aplicado / Wall bracket  
Acabado / Finish: PLA.B. (04)  
Peso neto / Net weight: 6,00 Kg/13,22 Lb

↑ 48cm 18,90"  
↔ 45cm 17,72"  
↗ 22cm 8,66"  
⚡ 2 (E14)



**C**ristal veneciano transparente arenado fabricado a la Piastra.

**V**enetian transparent sanded glass, made to the Piastra process.

**: 19985-0**

Plafón / Ceiling fixture  
Acabado / Finish: PLA.B. (04)  
Peso neto / Net weight: 8,00 Kg/17,62 Lb

↑ 37cm 14,57"  
⊘ 96cm 37,80"  
⚡ 8 (E14)



· Cristal veneciano pintado blanco al horno, fabricado a la Piastra.  
· Venetian white coloured glass oven dried and made to the Piastra process.

**: 19959-1**

Aplicado / Wall bracket  
Acabado / Finish: PLA.B. (04)  
Peso neto / Net weight: 6,00 Kg/13,22 Lb

↑ 48cm 18,90"  
↔ 45cm 17,72"  
↗ 22cm 8,66"  
⚡ 2 (E14)



**: 19958-1**

Colgante / Pendant  
Acabado / Finish: PLA.B. (04)  
Peso neto / Net weight: 45,10 Kg/99,34 Lb

↑ 94cm 37,01"  
⊘ 95cm 37,40"  
⚡ 19 (E14)





**R**omantic



# Romantic

**: 19852**

↑ 36cm 14,17"  
 ↔ 16cm 6,30"  
 ↗ 20cm 7,87"  
 ⚡ 1 (E14)

Aplicque / Wall bracket  
 Acabado / Finish: AN (49)  
 Peso neto / Net weight :1,18 Kg/2,60 Lb  
 Material/Materials: Estructura de latón y pantalla de tafetan color brandy/  
 Brass structure & shade brandy colour taffetan  
 Pantalla / Shade 1629-36



**: 19853**

↑ 36cm 14,17"  
 ⌀ 16cm 6,30"  
 ⚡ 1 (E14)

Sobremesa / Table lamp  
 Acabado / Finish: AN (49)  
 Peso neto / Net weight :1,32 Kg/2,91 Lb  
 Material/Materials: Estructura de latón y pantalla de tafetan color brandy/  
 Brass structure & shade brandy colour taffetan  
 Pantalla / Shade 1629-36



**: 19851**

↑ 55cm 21,65"  
 ⌀ 78cm 30,71"  
 ⚡ 6 (E14)

Lámpara / Chandelier  
 Acabado / Finish: AN (49)  
 Peso neto / Net weight :7,60 Kg/16,74 Lb  
 Material/Materials: Estructura de latón y pantallas de tafetan color brandy/  
 Brass structure & shades brandy colour taffetan  
 Pantalla / Shade 1629-36



**: 19867**

↑ 64cm 25,20"  
 ⌀ 23cm 9,06"  
 ⚡ 1 (E14)

Sobremesa / Table lamp  
 Acabado / Finish: PL-B (04)  
 Peso neto / Net weight : 1,45 Kg/3,19 Lb  
 Material/Materials: Estructura de latón / Brass structure /  
 Pantalla / Shade 1629-39



**: 19866**

↑ 48cm 18,90"  
 ⌀ 65cm 25,59"  
 ⚡ 6 (E14)

Lámpara / Chandelier  
 Acabado / Finish: PL-B (04)  
 Peso neto / Net weight: 7,01Kg/15,44Lb  
 Material/Materials: Estructura de latón y cristal scholer amatista/  
 Brass structure & scholer amethyst crystal  
 Pantalla / Shade 1629-34





**: 19905**

↓ 62cm 24,41"  
∅ 90cm 35,43"  
⚡ 5 (E14)

Lámpara / Chandelier  
Acabado / Finish: PPE (391)  
Peso neto / Net weight: 8,60Kg/19,94Lb  
Material/Materials: Estructura de metal  
y cristal scholer/  
Metal structure & scholer crystal  
Pantalla / Shade 1629-60



**: 19905-1**

↓ 62cm 24,41"  
∅ 90cm 35,43"  
⚡ 5 (E14)

Lámpara / Chandelier  
Acabado / Finish: PPE (391)  
Peso neto / Net weight: 4,60 Kg/10,13Lb  
Material/Materials: Estructura de metal y cristal scholer/  
Metal structure & scholer crystal  
Pantalla / Shade 1629-46





**: 19904**

↑ 73cm 28.74"  
∅ 90cm 35.43"  
⚡ 6 (E14)

Lámpara / Chandelier  
Acabado / Finish: AN.(49)  
Peso neto / Net weight: 9,60 Kg/21,15 Lb  
Material/Materials: Estructura de metal/  
Metal structure  
Pantalla / Shade 1629-60



**: 19904-1**

↑ 73cm 28.74"  
∅ 90cm 35.43"  
⚡ 6 (E14)

Lámpara / Chandelier  
Acabado / Finish: AN.(49)  
Peso neto / Net weight: 8,00 Kg/17,62 Lb  
Material/Materials: Estructura de metal/  
Metal structure  
Pantalla / Shade 1629-46



# Romantic



Acabado / Finish: D.ETR/AN (424)



**: 19649**

Lámpara / Chandelier

Acabado / Finish: CR.B./N.B. (432)

Peso neto / Net weight: 4,82Kg/10,62Lb

Material/Materials: Bronce y lágrimas de cristal Italiano/  
Casted bronze & Italian crystal drops

Pantalla / Shade 1627-84

↑ 50cm 19,69"

∅ 85cm 33,46"

⚡ 5 (E14)

Lámpara creada a principios del siglo XX, de estilo Art Nouveau, que re-editamos en 1993 con motivo de nuestro centenario. Pieza emblemática, que por su acabado y su decoración en verde sobre las tulipas, es una de las joyas de la casa Mariner.



This vintage Art Nouveau chandelier dating back to the 1900s have been relaunched in 1993 in commemoration of the 100 years of the foundation of Mariner, S.A. The green shadowed art glass, fanciful leaves decoration add to the beauty of this unique and iconic chandelier.



**: 18576**

Lámpara / Chandelier

Acabado / Finish: A.N. (49)

Peso neto / Net weight: 9,56 kg/21,06 Lb

Material/ Materials:  
Bronce y Cristal Veneciano/  
Casted Bronze & Venetian Glass

↑ 83cm 32,68"

∅ 66cm 25,98"

⚡ 3+1 (E27)



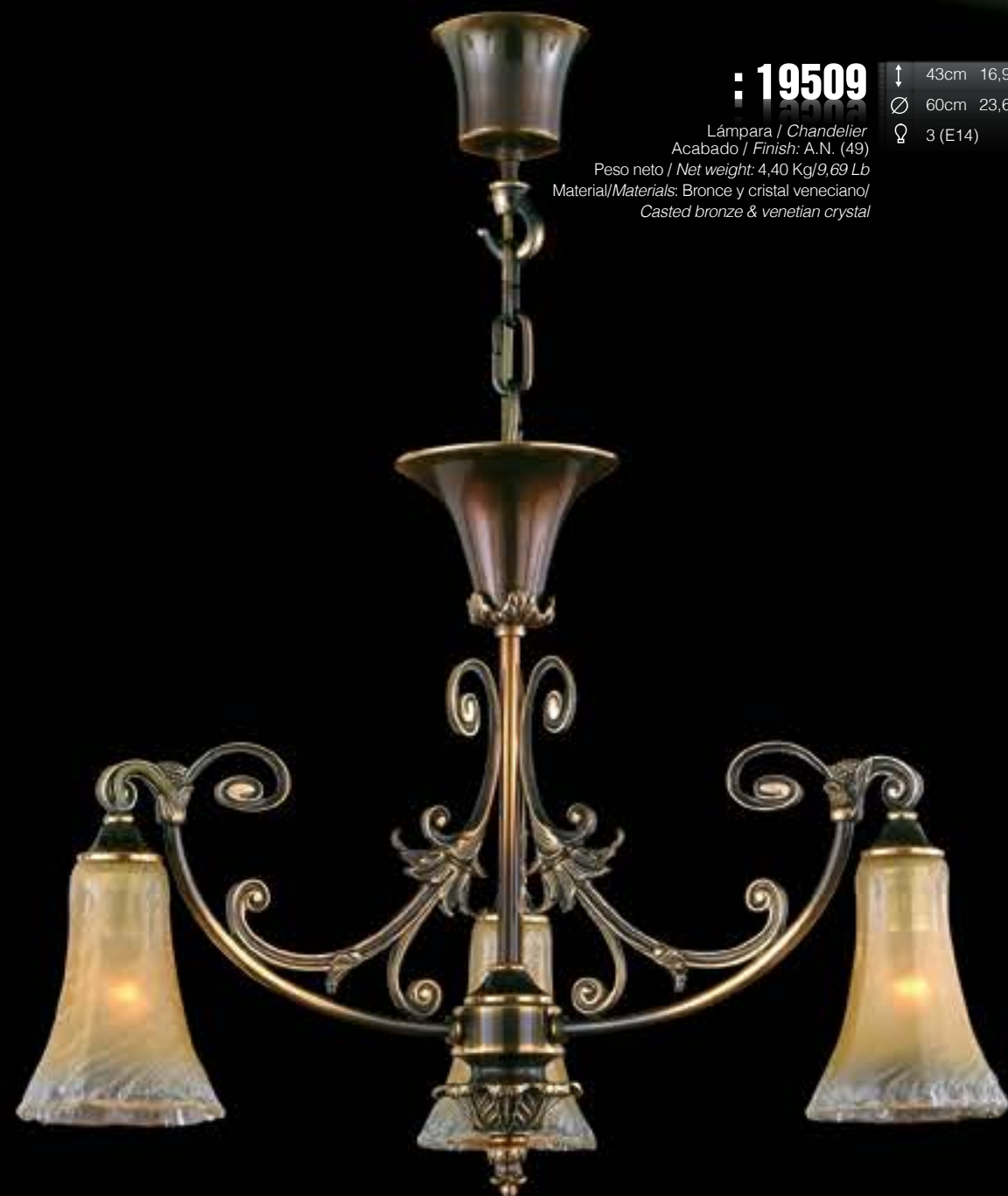
# Romantic



**: 19511**

↑ 55cm 21,65"  
 ↔ 26cm 10,24"  
 ↗ 11cm 4,33"  
 ⚡ 1 (E14)

Sobremesa / Table lamp  
 Acabado / Finish: A.N. (49)  
 Peso neto / Net weight: 2,40 Kg/5,29 Lb  
 Material/Materials: Bronce y cristal veneciano/  
 Casted bronze & venetian crystal



**: 19509**

↑ 43cm 16,93"  
 ∅ 60cm 23,62"  
 ⚡ 3 (E14)

Lámpara / Chandelier  
 Acabado / Finish: A.N. (49)  
 Peso neto / Net weight: 4,40 Kg/9,69 Lb  
 Material/Materials: Bronce y cristal veneciano/  
 Casted bronze & venetian crystal



**: 19508**

↑ 43cm 16,93"  
 ∅ 60cm 23,62"  
 ⚡ 6 (E14)

Lámpara / Chandelier  
 Acabado / Finish: A.N. (49)  
 Peso neto / Net weight: 6,01 Kg/13,24 Lb  
 Material/Materials: Bronce y cristal veneciano/  
 Casted bronze & venetian crystal



**: 19510**

↑ 35cm 13,78"  
 ∅ 42cm 16,54"  
 ⚡ 3 (G9)

Plafón / Ceiling fixture  
 Acabado / Finish: A.N. (49)  
 Peso neto / Net weight: 5,01 Kg/11,04 Lb  
 Material/Materials: Bronce y cristal veneciano/  
 Casted bronze & venetian crystal





**: 19728**  
 ↑ 62cm 24,41"  
 ∅ 78cm 30,71"  
 ♀ 3 (E27)+3(E14)

Lámpara / Chandelier  
 Acabado / Finish: A.N. (49)  
 Peso neto / Net weight: 13,00 Kg/28,63Lb  
 Material/Materials: Bronce, latón y cristal veneciano/  
 Casted bronze, brass & venetian glass



**: 19729**  
 ↑ 33cm 12,99"  
 ∅ 48cm 18,90"  
 ♀ 6 (E14)

Plafón / Ceiling fixture  
 Acabado / Finish: O.F. (55)  
 Peso neto / Net weight: 7,20 Kg/15,86 Lb  
 Material/Materials: Bronce, latón y cristal veneciano/  
 Casted bronze, brass & venetian glass



**: 19730**  
 ↑ 22cm 8,66"  
 ↔ 36cm 14,17"  
 ↗ 17cm 6,69"  
 ♀ 2 (E14)

Aplicque / Wall bracket  
 Acabado / Finish: A.N. (49)  
 Peso neto / Net weight: 2,40 Kg/5,29 Lb  
 Material/Materials: Bronce, latón y cristal veneciano/  
 Casted bronze, brass & venetian glass

**: 19731**  
 ↑ 184cm 72,44"  
 ∅ 46cm 18,11"  
 ♀ 1 (halog E27)

Pie / Foot Lamp  
 Acabado / Finish: Brox / A.N. (218)  
 Peso neto / Net weight: 20,60 Kg/45,37 Lb  
 Material/Materials: Bronce, latón y cristal veneciano/  
 Casted bronze, brass & venetian glass







**: 19689**

↓ 65cm 25.59"  
 ∅ 84cm 33.07"  
 ⚡ 6 (E27)+3 (E14)

Lámpara / Chandelier  
 Acabado / Finish: A.N. (49)  
 Peso neto / Net weight: 18.00 Kg/39.65 Lb  
 Material/Materials: Bronce, latón y cristal veneciano/  
 Casted bronze, brass & venetian glass



**: 19261-10**

↑ 26cm 10.24"  
 → 16cm 6.30"  
 ↗ 16/35cm6.30"/13.78"  
 ⚡ 1 (E14)

Aplique / Wall bracket  
 Acabado / Finish: POE/PPE (392)  
 Peso neto / Net weight: 1.29 Kg/2.84 Lb  
 Material/Materials: Estructura metálica/  
 Metal structure  
 Pantalla / Shade 1627-68



**: 19259-10**

↑ 45cm 17.72"  
 ∅ 72cm 28.35"  
 ⚡ 4 (E14)

Lámpara / Chandelier  
 Acabado / Finish: POE/PPE (392)  
 Peso neto / Net weight: 3.50 Kg/7.71 Lb  
 Material/Materials: Estructura metálica/  
 Metal structure  
 Pantalla / Shade 1627-68



# Romantic



**: 19263-10**

Pie / Foot Lamp  
 Acabado / Finish: POE/PPE (392)  
 Peso neto / Net weight: 2,40Kg/5,29Lb  
 Material/Materials: Estructura metálica/  
 Metal structure  
 Pantalla / Shade 1627-69

↑ 138cm 54,33"  
 ↔ 25cm 9,84"  
 ↗ 25cm 9,84"  
 ⚪ 1 (E14)



**: 19262-10**

Sobremesa / Table lamp  
 Acabado / Finish: POE/PPE (392)  
 Peso neto / Net weight: 1,20Kg/2,64Lb  
 Material/Materials: Estructura metálica/  
 Metal structure  
 Pantalla / Shade 1627-68

↑ 55cm 21,65"  
 ↔ 20cm 7,87"  
 ↗ 20cm 7,87"  
 ⚪ 1 (E14)



**: 19258-10**

Lámpara / Chandelier  
 Acabado / Finish: POE/PPE (392)  
 Peso neto / Net weight: 4,17 Kg/9,19 Lb  
 Material/Materials: Estructura metálica/  
 Metal structure  
 Pantalla / Shade 1627-68

↑ 45cm 17,72"  
 ∅ 72cm 28,35"  
 ⚪ 5 (E14)



# Accessories Collection







**: 14158** ↑ 90cm 35,43"  
 Ø 40cm 15,75"

**Candelabro/Candlestick**  
 Materials: Casted Bronze & Scholer crystal.  
 Finish: Gold plated.  
 Peso neto/ Net weight: 10,04Kg/22,11Lb



**: 14184** ↑ 65cm 25,59"  
 Ø 21cm 8,27"

**Candelabro / Candlestick**  
 Materials: Porcelain and casted bronze.  
 Finish: Silver plated.  
 Peso neto/ Net weight: 3,40Kg/7,49Lb



**: 14188** ↑ 57cm 22,44"  
 Ø 16cm 6,30"

**Candelabro / Candlestick**  
 Materials: Casted bronze and crystal.  
 Finish: OF, bronze with patine.  
 Peso neto/ Net weight: 4,90Kg/10,79Lb



**: 14131** ↑ 59cm 23,23"  
 Ø 31cm 12,20"

**Candelabro / Candlestick**  
 Materials: Alabaster and casted bronze.  
 Finish: OF, bronze with patine.  
 Peso neto/ Net weight: 6,51Kg/14,34Lb



**: 14128** ↑ 53cm 20,87"  
 Ø 31cm 12,20"

**Candelabro / Candlestick**  
 Materials: Casted bronze.  
 Finish: OF, bronze with patine.  
 Peso neto/ Net weight: 6,27Kg/13,81Lb





**: 14175** ↑ 93cm 36,61"  
 Ø 38cm 14,96"

**Candelabro / Candlestick**  
 Materials: Casted bronze and scholer crystal.  
 Finish: silver plated.  
 Peso neto/ Net weight: 10,00Kg/22,03Lb



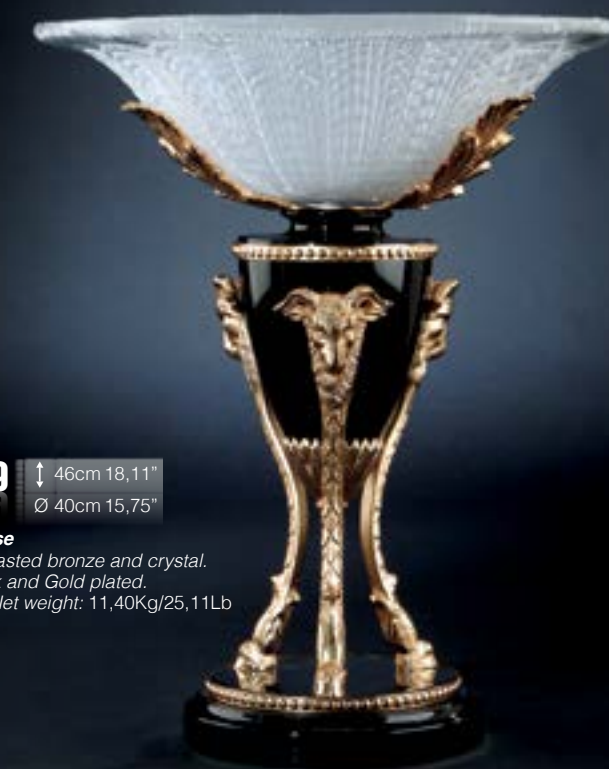
**: 14174** ↑ 69cm 27,17"  
 Ø 32cm 12,60"

**Candelabro / Candlestick**  
 Materials: Casted bronze and scholer crystal.  
 Finish: Gold plated.  
 Peso neto/ Net weight: 6,99Kg/15,40Lb



**: 14155-1** ↑ 31cm 12,20"  
 Ø 42cm 16,54"

**Centro / Vase**  
 Materials: Alabaster and casted bronze.  
 Finish: Brandy alabaster and gold plated bronze.  
 Peso neto/ Net weight: 10,60Kg/23,35Lb



**: 14159** ↑ 46cm 18,11"  
 Ø 40cm 15,75"

**Centro / Vase**  
 Materials: Casted bronze and crystal.  
 Finish: Black and Gold plated.  
 Peso neto/ Net weight: 11,40Kg/25,11Lb



**: 14141** ↑ 50cm 19,69"  
 ← 34cm 13,39"  
 ↗ 26cm 10,24"

**Centro / Vase**  
 Materials: Casted bronze and wood.  
 Finish: OF, bronze with patine.  
 Peso neto/ Net weight: 7,60Kg/16,74Lb





**: 14197** ↑ 40cm 15,75"  
Ø 28cm 11,02"

**Centro / Vase**  
Materials: Glass, casted bronze and wood.  
Finish: Black and silver plate.  
Peso neto/ Net weight: 6,60Kg/14,54Lb

**: 14163** ↑ 36cm 14,17"  
Ø 40cm 15,75"

**Centro / Vase**  
Materials: Wood and Casted bronze.  
Finish: Gold plated and black.  
Peso neto/ Net weight: 9,80Kg/21,59Lb



**: 14191** ↑ 20cm 7,87"  
Ø 45cm 17,72"

**Centro / Vase**  
Materials: Casted bronze and crystal.  
Finish: Bright silver and bright black.  
Peso neto/ Net weight: 8,20Kg/18,06Lb



**: 14176** ↑ 47cm 18,50"  
Ø 62cm 24,41"

**Centro / Vase**  
Materials: Alabaster and casted bronze.  
Finish: White alabaster and gold plated bronze.  
Peso neto/ Net weight: 24,80Kg/54,63Lb

**: 14124** ↑ 23cm 9,06"  
Ø 34cm 13,39"

**Centro / Vase**  
Materials: porcelain and casted bronze.  
Finish: silver plated.  
Peso neto/ Net weight: 5,00Kg/11,01Lb



**: 14169** ↑ 21cm 8,27"  
Ø 46cm 18,11"

**Centro / Vase**  
Materials: Venetian glass and casted bronze.  
Finish: OF, bronze with patina.  
Peso neto/ Net weight: 9,70Kg/21,37Lb







**: 14121.1** ↓ 48cm 18,90"  
Ø 28cm 11,02"

**Centro / Vase**  
Materials: Alabaster and  
casted bronze.  
Finish: Brandy alabaster and  
gold plated bronze.  
Peso neto/ Net weight: 7,43Kg/16,37Lb



**: 14166** ↓ 42cm 16,54"  
Ø 60cm 23,62"

**Centro / Vase**  
Materials: Alabaster and casted bronze.  
Finish: Cream alabaster and  
OF bronze with patine.  
Peso neto/ Net weight: 14,24Kg/31,37Lb



**: 14140** ↓ 30cm 11,81"  
↔ 58cm 22,83"  
↗ 30cm 11,81"

**Centro / Vase**  
Materials: Alabaster and casted bronze.  
Finish: White alabaster and gold plated bronze.  
Peso neto/ Net weight: 8,60Kg/18,94Lb



**: 14185** ↓ 57cm 22,44"  
Ø 40cm 15,75"

**Centro / Vase**  
Materials: Casted bronze,  
crystal and marble.  
Finish: Antique gold plated.  
Peso neto/ Net weight: 13,71Kg/30,20Lb



**: 14167** ↓ 62cm 24,41"  
Ø 47cm 18,50"

**Centro / Vase**  
Materials: Alabaster  
and casted bronze.  
Finish: Cream alabaster and  
OF bronze with patine.  
Peso neto/ Net weight:  
28,01Kg/61,70Lb





**: 14021** ↑ 47cm 18,50"  
Ø 33cm 12,99"

**Copa / Cap**  
Materials: Alabaster and casted bronze.  
Finish: White alabaster and gold plated bronze.  
Peso neto/ Net weight: 15,00Kg/33,04Lb



**: 14187** ↑ 37cm 14,57"  
Ø 42cm 16,54"

**Centro / Vase**  
Materials: Casted bronze, crystal and marble.  
Finish: Old silver.  
Peso neto/ Net weight: 11,00Kg/24,23Lb



**: 14186** ↑ 80cm 31,50"  
Ø 37cm 14,57"

**Centro / Vase**  
Materials: Wood and alabaster.  
Finish: Bright silver.  
Peso neto/ Net weight: 30,40Kg/66,96Lb

14186-2 version without front inlays



**: 14142** ↑ 31cm 12,20"  
Ø 60cm 23,62"

**Centro / Vase**  
Materials: Alabaster and casted bronze.  
Finish: Cream alabaster and OF, bronze with patine.  
Peso neto/ Net weight: 22,01Kg/48,48Lb



**: 14192** ↑ 52cm 20,47"  
Ø 21cm 8,27"

**Centro / Vase**  
Materials: Casted bronze and crystal.  
Finish: Antique silver plated and bright black.  
Peso neto/ Net weight: 7,40Kg/16,30Lb





**: 14164** ↑ 48cm 18,90"  
↔ 25cm 9,84"  
↙ 15cm 5,91"

**Copa/Cap**  
Materials: Marble and casted bronze.  
Finish: Gold plated bronze.  
Peso neto/ Net weight: 7,57Kg/16,67Lb



**: 14044** ↑ 63cm 24,80"  
Ø 25cm 9,84"

**Tibor/Vase**  
Materials: Alabaster and casted bronze.  
Finish: Brandy alabaster and Art Nouveau bronze.  
Peso neto/ Net weight: 13,01Kg/28,66Lb



**: 14171** ↑ 74cm 29,13"  
↔ 33cm 12,99"  
↙ 20cm 7,87"

**Copa/Cap**  
Materials: Alabaster and casted bronze.  
Finish: Cream alabaster and bronze with patine.  
Peso neto/ Net weight: 11,95Kg/26,32Lb



**: 14195** ↑ 74cm 29,13"  
Ø 17cm 6,69"

**Tibor / Vase**  
Materials: Casted bronze, crystal and traventino marble.  
Finish: Antique silver plated.  
Peso neto/ Net weight: 11,80Kg/25,99Lb



**: 14018** ↑ 52cm 20,47"  
↔ 30cm 11,81"  
↙ 26cm 10,24"

**Tibor / Vase**  
Materials: Alabaster and casted bronze.  
Finish: White alabaster and gold plated bronze.  
Peso neto/ Net weight: 9,48Kg/20,88Lb





**: 14154** ↑ 57cm 22,44"  
 ← 32cm 12,60"  
 ↘ 20cm 7,87"

**Reloj / Clock**  
 Materials: Alabaster and casted bronze, German Machinery.  
 Finish: Cream alabaster and OF, bronze with patine.  
 Peso neto/ Net weight: 29,01Kg/63,90Lb

**: 14194** ↑ 65cm 25,59"  
 Ø 30cm 11,81"

**Centro / Vase**  
 Materials: Casted bronze and crystal.  
 Finish: Antique gold plated and bright black  
 Peso neto/ Net weight: 9,20Kg/20,26Lb.



**: 14196** ↑ 52cm 20,47"  
 Ø 27cm 10,63"

**Centro / Vase**  
 Materials: Casted bronze and crystal.  
 Finish: Antique gold plated.  
 Peso neto/ Net weight: 12,60Kg/27,75Lb



**: 14139** ↑ 43cm 16,93"  
 ← 43cm 16,93"  
 ↘ 25cm 9,84"

**Reloj / Clock**  
 Materials: Alabaster and casted bronze.  
 Finish: White alabaster and gold plated bronze.  
 Peso neto/ Net weight: 30,80Kg/67,84Lb



**: 14180** ↑ 60cm 23,62"  
 Ø 30cm 11,81"

**Tibor / Vase**  
 Materials: Alabaster and casted bronze.  
 Finish: Cream alabaster and OF, bronze with patine.  
 Peso neto/ Net weight: 10,42Kg/22,95Lb







**: 14161** ↓ 62cm 24.41"  
 ↔ 52cm 20.47"  
 ↗ 17cm 6.69"

**Reloj / Clock**  
 Materials: Wood & casted bronze and German Machinery.  
 Finish: Black and gold plated bronze.  
 Peso neto/ Net weight: 24,20Kg/53,30Lb



**: 14160** ↓ 77 cm 30.31"  
 ↔ 24 cm 9.45"  
 ↗ 20 cm 7.87"

**Reloj / Clock**  
 Materials: Wood, casted bronze, Swarovsky elements and German Machinery.  
 Finish: Black and gold plated bronze.  
 Peso neto/ Net weight: 22,01Kg/48,48Lb



**: 14148** ↓ 46 cm 18.11"  
 ↔ 44 cm 17.32"  
 ↗ 22 cm 8.66"

**Reloj / Clock**  
 Materials: Alabaster, casted bronze and German Machinery.  
 Finish: Brandy alabaster and OF, bronze with patina  
 Peso neto/ Net weight: 25,01Kg/55,09Lb



**: 14162** ↓ 60 cm 23.62"  
 ↔ 31 cm 12.20"  
 ↗ 23 cm 9.06"

**Tibor / Vase**  
 Materials: Wood, casted bronze and Swarovsky elements.  
 Finish: Black and gold plated bronze.  
 Peso neto/ Net weight: 20,01Kg/44,07Lb



**: 14162** ↓ 60 cm 23.62"  
 ↔ 31 cm 12.20"  
 ↗ 23 cm 9.06"

**Tibor / Vase**  
 Materials: Wood, casted bronze and Swarovsky elements.  
 Finish: Withe and silver plated bronze.  
 Peso neto/ Net weight: 20,01Kg/44,07Lb



Plafones  
ceiling fixtures



Apliques  
wall brackets



Pies  
foot lamps



Sobremesas  
table lamps





# Plafones ceiling fixtures







**: 19602-1**  
↑ 47cm 18,50"  
∅ 79cm 31,10"  
⚡ 6+6 (E14)

Plafón / Ceiling fixture  
Acabado / Finish: O.F. (55)  
Peso neto / Net weight: 16,50 kg/38,55 Lb  
Material / Materials: Bronce y Swarovski elements  
Casted Bronze & Swarovski elements



**: 19603-1**  
↑ 46 cm 18,11"  
∅ 57 cm 22,44"  
⚡ 8+4 (E14)

Plafón / Ceiling fixtures  
Acabado / Finish: O.F. (55)  
Peso neto / Net weight: 10,60 kg/23,35 Lb  
Material / Materials: Bronce y Swarovski elements  
Casted Bronze & Swarovski elements  
SWAROVSKI® es una marca registrada



**: 19841**  
↑ 49 cm 19,29"  
∅ 64 cm 25,20"  
⚡ 10 (E14)

Plafón / Ceiling fixture  
Acabado / Finish: PLA. ANT /NB (390)  
Peso neto / Net weight: 12,80 kg/28,19 Lb  
Material / Materials: Bronce y Cristal scholer  
Casted Bronze & scholer Crystal



**: 19991**  
↑ 29 cm 11,42"  
∅ 42 cm 16,54"  
⚡ 3 (E14)

Plafón / Ceiling fixture  
Acabado / Finish: O.F. (55)  
Peso neto / Net weight: 3 kg/6,61 Lb  
Material / Materials: Bronce y Cristal Veneciano  
Casted Bronze & Venetian Crystal



**: 19615**  
↑ 33 cm 12,99"  
∅ 60 cm 23,62"  
⚡ 6 (G9)

Plafón / Ceiling fixture  
Acabado / Finish: O.F. (55)  
Peso neto / Net weight: 9,40 kg/20,70 Lb  
Material / Materials: Bronce y Cristal Veneciano  
Casted Bronze & Venetian Crystal



**: 19210**  
↑ 24 cm 9,45"  
∅ 42 cm 16,54"  
⚡ 6 (E14)

Plafón / Ceiling fixture  
Acabado / Finish: O.A. (231)  
Peso neto / Net weight: 7,20 kg/15,86 Lb  
Material / Materials: Bronce y Cristal Checo  
Casted Bronze & Czech Crystal



**: 19705**  
↑ 36 cm 14,17"  
∅ 82 cm 32,28"  
⚡ 6 (E14)

Plafón / Ceiling fixture  
Acabado / Finish: AN (49)  
Peso neto / Net weight: 24,12 kg/53,13 Lb  
Material / Materials: Bronce y Cristal Veneciano  
Casted Bronze & Venetian Glass



**: 19401**  
↑ 36 cm 14,17"  
∅ 76 cm 29,92"  
⚡ 8 (E14)

Plafón / Ceiling fixture  
Acabado / Finish: O.F. (55)  
Peso neto / Net weight: 17,52 kg/38,59 Lb  
Material / Materials: Bronce y Cristal Veneciano  
Casted Bronze & Venetian Glass



**: 19495-1**  
↑ 35 cm 13,78"  
∅ 66 cm 25,98"  
⚡ 6 (E14)

Plafón / Ceiling fixture  
Acabado / Finish: O.F. (55)



**: 19495**  
↑ 35 cm 13,78"  
∅ 66 cm 25,98"  
⚡ 6 (E14)

Plafón / Ceiling fixture  
Acabado / Finish: Pla.Vi. (56)  
Peso neto / Net weight: 13,53 kg/29,80 Lb  
Material / Materials: Bronce y Cristal Veneciano  
Casted Bronze & Venetian Glass



**: 19612.1**  
↑ 40 cm 15,75"  
∅ 77 cm 30,31"  
⚡ 8 (E14)

Plafón / Ceiling fixture  
Acabado / Finish: O.F. (55)  
Peso neto / Net weight: 20,60 kg/45,37 Lb  
Material / Materials: Bronce y Cristal Veneciano  
Casted Bronze & Venetian Glass



**: 19524-1**  
↑ 34 cm 13,39"  
∅ 57 cm 22,44"  
⚡ 6 (E14)

Plafón / Ceiling fixture  
Acabado / Finish: O.F. (55)  
Peso neto / Net weight: 12,60 kg/27,75 Lb  
Material / Materials: Bronce y Cristal Veneciano  
Casted Bronze & Venetian Glass



**: 19876**  
↑ 3 cm 1,18"  
∅ 15 cm 5,91"  
⚡ 1 (GU10)

Plafón / Ceiling fixture  
Acabado / Finish: DB/N (60)  
Peso neto / Net weight: 0,90 kg/1,98 Lb  
Material / Materials: Bronce, Madera  
y Swarovski elements  
Casted Bronze, Wood & Swarovski elements



**: 19974**  
↑ 3 cm 1,18"  
∅ 18 cm 7,09"  
⚡ 1 (GU10)

Plafón / Ceiling fixture  
Acabado / Finish: DB (67)  
Peso neto / Net weight: 0,90 kg/1,98 Lb  
Material / Materials: Bronce y madera  
Casted Bronze & Wood



**: 19975**  
↑ 3 cm 1,18"  
∅ 18 cm 7,09"  
⚡ 1 (GU10)

Plafón / Ceiling fixture  
Acabado / Finish: DB (67)  
Peso neto / Net weight: 0,90 kg/1,98 Lb  
Material / Materials: Bronce y madera  
Casted Bronze & Wood





**: 19963**

↑ 49cm 12,29"  
∅ 76cm 29,92"  
⚡ 8+4 (E27)

Plafón / Ceiling fixture  
Acabado / Finish: Pla. Ant. (387)  
Peso neto / Net weight: 28,00 kg/61,67 Lb  
Material / Materials: Bronce y Cristal Veneciano  
/ Casted Bronze & Venetian Glass



**: 19964**

↑ 55cm 21,65"  
∅ 90cm 35,43"  
⚡ 12+6 (E27)

Plafón / Ceiling fixture  
Acabado / Finish: OA (231)  
Peso neto / Net weight:  
40,20 kg/88,55 Lb  
Material / Materials: Bronce  
y Cristal Veneciano  
Casted Bronze  
& Venetian Glass



**: 20030**

↑ 26cm 10,24"  
∅ 65cm 25,59"  
⚡ 5 (E14)

Plafón / Ceiling fixture  
Acabado / Finish: PLA.ANT (387)  
Peso neto / Net weight:  
17,00 kg/37,44 Lb  
Material / Materials:  
Bronce, Latón y  
Cristal Veneciano  
Casted Bronze, Brass &  
Venetian Glass



**: 19385**

↑ 34cm 13,39"  
∅ 71cm 27,95"  
⚡ 6 (G9)

Plafón / Ceiling fixture  
Acabado / Finish: Pla. Ant. (387)  
Peso neto / Net weight: 19,80 kg/43,61 Lb  
Material / Materials: Bronce y Cristal Veneciano  
Casted Bronze & Venetian Glass



**: 19464-1**

↑ 43cm 16,93"  
∅ 92cm 36,22"  
⚡ 10 (E14)

Plafón / Ceiling fixture  
Acabado / Finish: O.F (55)  
Peso neto / Net weight: 28,23 kg/62,18 Lb  
Material / Materials: Bronce y Cristal Veneciano  
Casted Bronze & Venetian Glass



**: 20012**

↑ 31cm 12,20"  
∅ 92cm 36,22"  
⚡ 6(E27)

Plafón / Ceiling fixture  
Acabado / Finish: CR.B. (420)  
Peso neto / Net weight: 28,00 Kg/61,67 Lb  
Material / Materials: Bronce, Latón y Cristal Veneciano  
/Casted Bronze, Brass & Venetian Glass

**: 20013**

↑ 26cm 10,24"  
∅ 65cm 25,59"  
⚡ 6(E14)

Plafón / Ceiling fixture  
Acabado / Finish: CR.B. (420)  
Peso neto / Net weight:  
13,40 Kg/29,52 Lb  
Material / Materials: Bronce,  
Latón y Cristal Veneciano  
Casted Bronze,  
Brass & Venetian Glass



**: 18523**

↑ 43cm 16,93"  
∅ 50cm 19,69"  
⚡ 6 (E14)

Plafón / Ceiling fixture  
Acabado / Finish: AN (49)  
Peso neto / Net weight: 10,01 kg/22,05 Lb  
Material / Materials: Bronce y Alabastro  
Casted Bronze & Alabaster



**: 19011**

↑ 30cm 11,81"  
∅ 40cm 15,75"  
⚡ 3 (E14)

Plafón / Ceiling fixture  
Acabado / Finish: AN (49)  
Peso neto / Net weight: 6,20 kg/13,66 Lb  
Material / Materials: Bronce y Alabastro  
/ Casted Bronze & Alabaster



**: 19442**

↑ 35cm 13,78"  
∅ 55cm 21,65"  
⚡ 6 (E14)

Plafón / Ceiling fixture  
Acabado / Finish: O.F. (55)  
Peso neto / Net weight: 10,20 kg/22,47 Lb  
Material / Materials: Bronce y Alabastro  
/ Casted Bronze & Alabaster



**: 18897**

↑ 46cm 18,11"  
∅ 51cm 20,08"  
⚡ 6 (E14)

Plafón / Ceiling fixture  
Acabado / Finish: O.F. (55)  
Peso neto / Net weight: 14,80 kg/32,60 Lb  
Material / Materials: Bronce y Alabastro  
/ Casted Bronze & Alabaster



**: 18738**

↑ 40cm 15,75"  
∅ 51cm 20,08"  
⚡ 6 (E14)

Plafón / Ceiling fixture  
Acabado / Finish: OF, PB (303)  
Peso neto / Net weight: 11,60 kg/25,55 Lb  
Material / Materials: Bronce y Alabastro  
/ Casted Bronze & Alabaster



**: 19180**

↑ 29cm 11,42"  
∅ 46cm 18,11"  
⚡ 6 (E14)

Plafón / Ceiling fixture  
Acabado / Finish: O.F. (55)  
Peso neto / Net weight: 5,75 kg/12,67 Lb  
Material / Materials: Bronce y Alabastro  
Casted Bronze & Alabaster





**: 19907**

↑ 25cm 9,84"  
∅ 86cm 33,86"  
⚡ 8 (E14)

Plafón / Ceiling fixture  
Acabado / Finish: CR.GR. (438)  
Peso neto / Net weight: 15,60 kg/34,36 Lb  
Material / Materials: Latón y Cristal Veneciano  
Brass & Venetian Glass



**: 19908**

↑ 20cm 7,87"  
∅ 54cm 21,26"  
⚡ 4 (E14)

Plafón / Ceiling fixture  
Acabado / Finish: CR.GR. (438)  
Peso neto / Net weight: 5,05 kg/11,12 Lb  
Material / Materials: Latón y Cristal Veneciano  
Brass & Venetian Glass



**: 19985**

↑ 37cm 14,57"  
∅ 96cm 37,80"  
⚡ 8 (E14)

Plafón / Ceiling fixture  
Acabado / Finish: Pla.B (04)  
Peso neto / Net weight: 8,00 kg/17,62 Lb  
Material / Materials: Bronce y Cristal Veneciano  
/ Casted Bronze & Venetian Glass



**: 19980**

↑ 40cm 15,75"  
∅ 90cm 35,43"  
⚡ 10 (E14)

Plafón / Ceiling fixture  
Acabado / Finish: Pla.Ant (387)  
Peso neto / Net weight:  
43,15 kg/95,04 Lb  
Material / Materials:  
Bronce y Cristal Veneciano  
Casted Bronze & Venetian Glass

**: 20005**

↑ 60cm 23,62"  
∅ 146cm 57,48"  
⚡ 14 (E14)

Plafón / Ceiling fixture  
Acabado / Finish: Pla.Ant (387)  
Peso neto / Net weight:  
135 kg/297,36 Lb  
Material / Materials:  
Bronce y Cristal Veneciano  
Casted Bronze & Venetian Glass



**: 19966**

↑ 25cm 9,84"  
∅ 65cm 25,59"  
⚡ 6 (E14)

Plafón / Ceiling fixture  
Acabado / Finish: Pla. B (04)  
Peso neto / Net weight: 10,00 kg/22,03 Lb  
Material / Materials: Latón y Cristal Veneciano  
Brass & Venetian Glass



**: 19967**

↑ 19cm 7,48"  
∅ 45cm 17,72"  
⚡ 4 (E14)

Plafón / Ceiling fixture  
Acabado / Finish: Pla. B (04)  
Peso neto / Net weight: 5,80 kg/12,78 Lb  
Material / Materials: Latón y  
Cristal Veneciano  
Brass & Venetian Glass



**: 19510**

↑ 35cm 13,78"  
∅ 42cm 16,54"  
⚡ 3 (G9)

Plafón / Ceiling fixture  
Acabado / Finish: AN. (49)  
Peso neto / Net weight: 5,01 kg/11,04 Lb  
Material / Materials: Bronce y Cristal Veneciano  
/ Casted Bronze & Venetian Glass



**: 19729**

↑ 33cm 12,99"  
∅ 48cm 18,90"  
⚡ 6 (E14)

Plafón / Ceiling fixture  
Acabado / Finish: O.F. (55)  
Peso neto / Net weight: 7,20 kg/15,86 Lb  
Material / Materials: Bronce y Cristal Veneciano  
/ Casted Bronze & Venetian Glass



**: 19992**

↑ 15cm 5,91"  
∅ 40cm 15,75"  
⚡ 3 (E14)

Plafón / Ceiling fixture  
Acabado / Finish: CR. B (420)  
Peso neto / Net weight: 4,34 kg/9,56 Lb  
Material / Materials: Latón y  
Cristal Veneciano  
Brass & Venetian Glass



**: 19990**

↑ 27cm 10,63"  
∅ 60cm 23,62"  
⚡ 6 (E14)

Plafón / Ceiling fixture  
Acabado / Finish: CR. B (420)  
Peso neto / Net weight: 9,80 kg/21,59 Lb  
Material / Materials: Latón y Cristal Veneciano  
Brass & Venetian Glass



**: 19941**

↑ 33cm 12,99"  
∅ 86cm 33,86"  
⚡ 8 (E14)

Plafón / Ceiling fixture  
Acabado / Finish: Pla.B (04)  
Peso neto / Net weight: 24,00 kg/52,86 Lb  
Material / Materials: Latón y Cristal scholer  
/ Brass & scholer Crystal



**: 19943**

↑ 33cm 12,99"  
∅ 65cm 25,59"  
⚡ 6 (E14)

Plafón / Ceiling fixture  
Acabado / Finish: Pla.B (04)  
Peso neto / Net weight: 6,80 kg/14,98 Lb  
Material / Materials: Latón y Cristal scholer  
Brass & scholer Crystal



Acabado / Finish: OA (231)





**: 19993** ↑ 20cm 7,87"  
 ∅ 60cm 23,62"  
 ⚡ 6 (E14)  
 Plafón / Ceiling fixture  
 Acabado / Finish: O.F. (55)  
 Peso neto / Net weight: 7,80kg/17,18 Lb  
 Material / Materials: Bronce y Cristal Veneciano  
 / Casted Bronze & Venetian Glass



**: 19994** ↑ 20cm 7,87"  
 ∅ 50cm 19,69"  
 ⚡ 3 (E14)  
 Plafón / Ceiling fixture  
 Acabado / Finish: O.F. (55)  
 Peso neto / Net weight: 5,23kg/11,52 Lb  
 Material / Materials: Bronce y Cristal Veneciano  
 / Casted Bronze & Venetian Glass



**: 19462-1** ↑ 36cm 14,17"  
 ∅ 75cm 29,53"  
 ⚡ 10 (E14)  
 Plafón / Ceiling fixture  
 Acabado / Finish: POE (380)  
 Peso neto / Net weight: 7,01kg/15,44 Lb  
 Material / Materials: Estructura Metálica y Cristal Veneciano  
 / Metal Structure & Venetian Glass



**: 19625** ↑ 21cm 8,27"  
 ∅ 60cm 23,62"  
 ⚡ 6 (E14)  
 Plafón / Ceiling fixture  
 Acabado / Finish: POE (380)  
 Peso neto / Net weight: 9,60kg/21,15 Lb  
 Material / Materials: Estructura Metálica y Cristal Veneciano  
 Metal Structure & Venetian Glass



**: 20008** ↑ 45cm 17,72"  
 ∅ 98cm 38,58"  
 ⚡ 9 (E14)  
 Plafón / Ceiling fixture  
 Acabado / Finish: Pla.Ant. (387)  
 Peso neto / Net weight: 34,80kg / 76,65 Lb  
 Material / Materials: Bronce, latón y Cristal Veneciano  
 Casted Bronze, Brass & Venetian Glass



**: 19308** ↑ 23cm 9,06"  
 ↔ 36cm 14,17"  
 ↗ 36cm 14,17"  
 ⚡ 4 (G9)  
 Plafón / Ceiling fixture  
 Acabado / Finish: POE(380)  
 Peso neto / Net weight: 3,60kg / 7,93 Lb  
 Material / Materials: Estructura Metálica y Cristal Veneciano  
 Metal Structure & Venetian Glass



**: 19307** ↑ 27cm 10,63"  
 ↔ 46cm 18,11"  
 ↗ 46cm 18,11"  
 ⚡ 4 (G9)  
 Plafón / Ceiling fixture  
 Acabado / Finish: POE(380)  
 Peso neto / Net weight: 5,05kg/11,12 Lb  
 Material / Materials: Estructura Metálica y Cristal Veneciano  
 Metal Structure & Venetian Glass



**: 20035** ↑ 25cm 9,84"  
 ∅ 75cm 29,53"  
 ⚡ 8 (E14)  
 Plafón / Ceiling fixture  
 Acabado / Finish: DB (67)  
 Peso neto / Net weight: 14kg/30,84 Lb  
 Material / Materials: Cristal Veneciano  
 Venetian Glass



**: 19555** ↑ 17cm 6,69"  
 ∅ 50cm 19,69"  
 ⚡ 4 (G9)  
 Plafón / Ceiling fixture  
 Acabado / Finish: POE (380)  
 Peso neto / Net weight: 5,40kg/11,89 Lb  
 Material / Materials: Estructura Metálica y Cristal Veneciano  
 Metal Structure & Venetian Glass



**: 19556** ↑ 16cm 6,30"  
 ∅ 40cm 15,75"  
 ⚡ 3 (G9)  
 Plafón / Ceiling fixture  
 Acabado / Finish: POE (380)  
 Peso neto / Net weight: 4,20kg/9,25 Lb  
 Material / Materials: Estructura Metálica y Cristal Veneciano  
 Metal Structure & Venetian Glass



**: 20036** ↑ 20cm 7,87"  
 ∅ 50cm 19,69"  
 ⚡ 4 (E14)  
 Plafón / Ceiling fixture  
 Acabado / Finish: NI.B (516)  
 Peso neto / Net weight: 10kg/22,03 Lb  
 Material / Materials: Cristal Veneciano  
 Venetian Glass



**: 19557** ↑ 17cm 6,69"  
 ↔ 40cm 15,75"  
 ↗ 40cm 15,75"  
 ⚡ 4 (G9)  
 Plafón / Ceiling fixture  
 Acabado / Finish: PPE(391)  
 Peso neto / Net weight: 3,42kg / 7,53 Lb  
 Material / Materials: Estructura Metálica y Cristal Veneciano  
 / Metal Structure & Venetian Glass



**: 19427** ↑ 25cm 9,84"  
 ∅ 42cm 16,54"  
 ⚡ 3 (G9)  
 Plafón / Ceiling fixture  
 Acabado / Finish: POE (380)  
 Peso neto / Net weight: 4,20kg/9,25 Lb  
 Material / Materials: Estructura Metálica y Cristal Veneciano  
 Metal Structure & Venetian Glass



**: 19426** ↑ 31cm 12,20"  
 ∅ 55cm 21,65"  
 ⚡ 6 (E14)  
 Plafón / Ceiling fixture  
 Acabado / Finish: POE (380)  
 Peso neto / Net weight: 2,01kg/4,43 Lb  
 Material / Materials: Estructura Metálica y Cristal Veneciano  
 / Metal Structure & Venetian Glass



**: 19558** ↑ 16cm 6,30"  
 ↔ 30cm 11,81"  
 ↗ 30cm 11,81"  
 ⚡ 4 (G9)  
 Plafón / Ceiling fixture  
 Acabado / Finish: PPE(391)  
 Peso neto / Net weight: 3,20kg / 7,05 Lb  
 Material / Materials: Estructura Metálica y Cristal Veneciano  
 / Metal Structure & Venetian Glass



# Apliques wall brackets







**: 19880**

Aplique / Wall bracket  
Acabado / Finish: Pla.Vi(56)  
Peso neto / Net weight: 3,20kg / 7,05 Lb  
Material / Materials: Bronze /Casted Bronze

↑ 60cm 23,62"  
↔ 37cm 14,57"  
↘ 15cm 5,91"  
⚡ 2 (E14)



**: 19881**

Aplique / Wall bracket  
Acabado / Finish: Pla.Vi(56)  
Peso neto / Net weight: 3,20kg / 7,05 Lb  
Material / Materials: Bronze /Casted Bronze

↑ 60cm 23,62"  
↔ 37cm 14,57"  
↘ 15cm 5,91"  
⚡ 2 (E14)



**: 19084**

Aplique / Wall bracket  
Acabado / Finish: O.F.(55)  
Peso neto / Net weight: 7,01kg / 15,44 Lb  
Material / Materials: Bronze /Casted Bronze

↑ 73cm 28,74"  
↔ 42cm 16,54"  
↘ 20cm 7,87"  
⚡ 5 (E14)



**: 19230**

Aplique / Wall bracket  
Acabado / Finish: OA(231)  
Peso neto / Net weight: 9,76 kg/21,50 Lb  
Material / Materials: Bronze /Casted Bronze  
Pantalla/Shade: 1627-02

↑ 97cm 38,19"  
↔ 40cm 15,75"  
↘ 20cm 7,87"  
⚡ 2 (E14)



**: 19859**

Aplique / Wall bracket  
Acabado / Finish: Pla.Vi.(56)  
Peso neto / Net weight: 8,85kg / 19,49Lb  
Material / Materials: Bronze /Casted Bronze  
Pantalla/Shade: 1629-41

↑ 96cm 37,80"  
↔ 54cm 21,26"  
↘ 28cm 11,02"  
⚡ 2 (E14)



**: 19492**

Aplique / Wall bracket  
Acabado / Finish: OF/NST(100)  
Peso neto / Net weight: 4,20Kg/9,25 Lb  
Material / Materials: Bronze,Cristal Checo  
y columna central de madera /  
Casted Bronze, Czech Crystal  
& central colum in wood  
Pantalla/Shade: 1627-58

↑ 54cm 21,26"  
↔ 25cm 9,84"  
↘ 29cm 11,42"  
⚡ 2 (E14)



**: 19085**

Aplique / Wall bracket  
Acabado / Finish: OF(55)  
Peso neto / Net weight: 7,01kg / 15,44 Lb  
Material / Materials: Bronze /Casted Bronze

↑ 73cm 28,74"  
↔ 42cm 16,54"  
↘ 20cm 7,87"  
⚡ 5 (E14)



**: 19397**

Aplique / Wall bracket  
Acabado / Finish: OF(55)  
Peso neto / Net weight: 2,23kg / 4,91 Lb  
Material / Materials: Bronze /Casted Bronze

↑ 41cm 16,14"  
↔ 27cm 10,63"  
↘ 15cm 5,91"  
⚡ 2 (E14)



**: 19398**

Aplique / Wall bracket  
Acabado / Finish: OF(55)  
Peso neto / Net weight: 2,23kg / 4,91 Lb  
Material / Materials: Bronze /Casted Bronze

↑ 41cm 16,14"  
↔ 27cm 10,63"  
↘ 15cm 5,91"  
⚡ 2 (E14)



**: 19012**

Aplique / Wall bracket  
Acabado / Finish: OF(55)  
Peso neto / Net weight: 7,06 kg/15,55 Lb  
Material / Materials: Bronze /Casted Bronze  
Pantalla/Shade: 1624-73

↑ 99cm 38,98"  
↔ 46cm 18,11"  
↘ 25cm 9,84"  
⚡ 2 (E14)



**: 19347**

Aplique / Wall bracket  
Acabado / Finish: OF(55)  
Peso neto / Net weight: 7,80kg / 17,18 Lb  
Material / Materials: Bronze /Casted Bronze  
Pantalla/Shade: 1627-02

↑ 86cm 33,86"  
↔ 50cm 19,69"  
↘ 25cm 9,84"  
⚡ 2 (E14)



**: 2531**

Aplique / Wall bracket  
Acabado / Finish: OF(55)  
Peso neto / Net weight: 4,20 kg/9,25 Lb  
Material / Materials: Bronze /Casted Bronze

↑ 55cm 21,65"  
↔ 26cm 10,24"  
↘ 20cm 7,87"  
⚡ 2 (E14)





**: 19929**

Applique / Wall bracket  
Acabado / Finish: OA(231)  
Peso neto / Net weight: 14,40 kg/31,72 Lb  
Material / Materials: Bronce Y Cristal scholer  
Casted Bronze & scholer Crystal

↑ 92cm 36,22"  
↔ 60cm 23,62"  
↗ 30cm 11,81"  
⚡ 6 (E14)



**: 19921**

Applique / Wall bracket  
Acabado / Finish: OA(231)  
Peso neto / Net weight: 16,71 kg/36,81 Lb  
Material / Materials: Bronce y Cristal scholer  
Casted Bronze & scholer Crystal

↑ 100cm 39,37"  
↔ 64cm 25,20"  
↗ 38cm 14,96"  
⚡ 3+2+5 (E14)



**: 19849**

Applique / Wall bracket  
Acabado / Finish: OF(55)  
Peso neto / Net weight: 15,80 kg/34,80 Lb  
Material / Materials: Bronce Y Cristal scholer  
Casted Bronze & scholer Crystal

↑ 65cm 25,59"  
↔ 64cm 25,20"  
↗ 40cm 15,75"  
⚡ 6 (E14)



**: 19328**

Applique / Wall bracket  
Acabado / Finish: OF(55)  
Peso neto / Net weight: 5,80kg/12,78 Lb  
Material / Materials: Bronce y Cerámicas  
Casted Bronze & Ceramic Flowers

↑ 64cm 25,20"  
↔ 47cm 18,50"  
↗ 25cm 9,84"  
⚡ 3(E14)



**: 19671**

Applique / Wall bracket  
Acabado / Finish: OF(55)  
Peso neto / Net weight: 4,40kg/9,69 Lb  
Material / Materials: Bronce, Cristal Veneciano y Lagrimas de Cristal Checo  
Casted Bronze, Venetian Glass & Czech Crystal Drops  
Pantalla/Shade: 1629-01

↑ 50cm 19,69"  
↔ 40cm 15,75"  
↗ 23cm 9,06"  
⚡ 2(E14)



**: 19069**

Applique / Wall bracket  
Acabado / Finish: OF/NST(100)  
Peso neto / Net weight: 2,30kg/5,07 Lb  
Material / Materials: Bronce/Casted Bronze  
Pantalla/Shade: 1624-16

↑ 31cm 12,20"  
↔ 30cm 11,81"  
↗ 18cm 7,09"  
⚡ 2(E14)



**: 19100**

Applique / Wall bracket  
Acabado / Finish: OA(231)  
Peso neto / Net weight: 5,28 kg/11,63 Lb  
Material / Materials: Bronce Y Cristal Scholer  
Casted Bronze & Scholer Crystal  
Pantalla/Shade: 1624-87

↑ 67cm 26,38"  
↔ 36cm 14,17"  
↗ 40cm 15,75"  
⚡ 4 (E14)



**: 20029-1**

Applique / Wall bracket  
Acabado / Finish: OF (55)  
Peso neto / Net weight: 13,20 kg/29,07 Lb  
Material / Materials: Bronce y Cristal Checo /  
Casted Bronze & Czech Crystal

↑ 88cm 34,65"  
↔ 60cm 23,62"  
↗ 35cm 13,78"  
⚡ 3+3(E14)



**: 19386-1**

Applique / Wall bracket  
Acabado / Finish: OF(55)  
Peso neto / Net weight: 6,80 kg/14,98 Lb  
Material / Materials: Bronce Y Cristal Veneciano  
Casted Bronze & Venetian Glass

↑ 51cm 20,08"  
↔ 38cm 14,96"  
↗ 20cm 7,87"  
⚡ 2 (G9)



**: 19766**

Applique / Wall bracket  
Acabado / Finish: OF(55)  
Peso neto / Net weight: 3,26kg/7,18 Lb  
Material / Materials: Bronce y Cristal Checo  
Casted Bronze & Czech Crystal  
Pantalla/Shade: 1627-58

↑ 53cm 20,87"  
↔ 36cm 14,17"  
↗ 24cm 9,45"  
⚡ 2(E14)



**: 19891**

Applique / Wall bracket  
Acabado / Finish: Pla. Vi/(56)  
Peso neto / Net weight: 2,20kg/4,85 Lb  
Material / Materials: Bronce y Pantalla Fruncida  
Casted Bronze & Gathering shade  
Pantalla/Shade: 1629-50

↑ 77cm 30,31"  
↔ 28cm 11,02"  
↗ 14cm 5,51"  
⚡ 1(E14)



**: 19892**

Applique / Wall bracket  
Acabado / Finish: OF(55)  
Peso neto / Net weight: 1,80kg/3,96 Lb  
Material / Materials: Bronce y Pantalla Fruncida  
Casted Bronze & Gathering shade  
Pantalla/Shade: 1629-49

↑ 110cm 43,31"  
↔ 28cm 11,02"  
↗ 14cm 5,51"  
⚡ 1(E14)





**: 19137**

↑ 157cm 61.81"  
↔ 32cm 12.60"  
↗ 27cm 10.63"  
♀ 1(E14)  
Aplique / Wall bracket  
Acabado / Finish: Brox/An(218)  
Peso neto / Net weight:  
11,40kg/25,11 Lb  
Material / Materials:  
Bronce, Estructura de madera  
Latón y Alabastro/Casted Bronze,  
Structure in Wood,  
Brass & Alabaster



**: 19923**

↑ 80cm 31.50"  
↔ 19cm 7.48"  
↗ 20cm 7.87"  
♀ 1(E14)  
Aplique / Wall bracket  
Acabado / Finish:  
OA(231)  
Peso neto / Net weight:  
3,72kg/8,19 Lb  
Material / Materials:  
Bronce, Latón y  
Cristal Veneciano  
Casted Bronze, Brass  
& Venetian Glass



**: 19673**

↑ 80cm 31.50"  
↔ 30cm 11.81"  
↗ 24cm 9.45"  
♀ 1(E27)  
Aplique / Wall bracket  
Acabado / Finish:  
OF(55)  
Peso neto / Net weight:  
7,11kg/15,66 Lb  
Material / Materials:  
Bronce, Latón y Cristal Veneciano  
Casted Bronze, Brass & Venetian Glass



**: 19388**

↑ 65cm 25.59"  
↔ 23cm 9.06"  
↗ 22cm 8.66"  
♀ 3(E14)  
Aplique / Wall bracket  
Acabado / Finish:  
OF/NST(100)  
Peso neto / Net weight:  
2,62kg/5,77 Lb  
Material / Materials:  
Bronce, Pantalla Metálica  
Casted Bronze & Metal Shade



**: 19158**

↑ 44cm 17.32"  
↔ 21cm 8.27"  
↗ 15cm 5.91"  
♀ 1(E14)  
Aplique / Wall bracket  
Acabado / Finish: OF(55)  
Peso neto / Net weight:  
4,60kg/10,13 Lb  
Material / Materials:  
Bronce, Alabastro  
Casted Bronze & Alabaster



**: 19767**

↑ 42cm 16.54"  
↔ 21cm 8.27"  
↗ 24cm 9.45"  
♀ 1(G9)  
Aplique / Wall bracket  
Acabado / Finish: OF(55)  
Peso neto / Net weight:  
2,40kg/5,29 Lb  
Material / Materials:  
Bronce y Cristal Veneciano  
Casted Bronze & Venetian Glass



**: 19383**

↑ 167cm 65.75"  
↔ 50cm 19.69"  
↗ 45cm 17.72"  
♀ 1(E27) Halog  
Aplique / Wall bracket  
Acabado / Finish: OF/NST(100)  
Peso neto/Net weight:  
11,18kg/24,63 Lb  
Material / Materials:  
Bronce, Estructura de madera  
y Latón/Casted Bronze,  
Structure in Wood & Brass



**: 19983**

↑ 164cm 64.57"  
↔ 45cm 17.72"  
↗ 49cm 19.29"  
♀ 1(E27) Halog  
Aplique / Wall bracket  
Acabado / Finish: Pla. Ant/NB(390)  
Peso neto/Net weight:  
14,00kg/30,84 Lb  
Material / Materials:  
Bronce, Estructura de madera  
Latón Cristal Veneciano  
Casted Bronze,  
Structure in Wood, Venetian Glass & Brass



**: 19103**

↑ 64 cm 25.20"  
↔ 28 cm 11.02"  
↗ 23 cm 9.06"  
♀ 1(E27)  
Aplique / Wall bracket  
Acabado / Finish:  
POE/OF(357)  
Peso neto / Net weight:  
7,10 kg/15,64 Lb  
Material / Materials:  
Bronce, Columna de madera y Alabastro  
Casted Bronze, colum in wood & Alabaster



**: 18490**

↑ 65 cm 25.59"  
↔ 24 cm 9.45"  
↗ 25 cm 9.84"  
♀ 1(E27)  
Aplique / Wall bracket  
Acabado / Finish:  
OA/NB(288)  
Peso neto / Net weight:  
4,50 kg/9,91 Lb  
Material / Materials:  
Bronce, Latón y Columna de madera  
Casted Bronze, Brass & colum in wood



Acabado / Finish:  
PLA.AN/NB(390)





**: 19842**  
 ↑ 89 cm 35,04"  
 ↔ 45 cm 17,72"  
 ↗ 33 cm 12,99"  
 ⚡ 5(E14)  
 Aplique / Wall bracket  
 Acabado / Finish: OA(231)  
 Peso neto / Net weight: 12,72 kg/28,02 Lb  
 Material / Materials: Bronce y Cristal scholer  
 Casted Bronze & scholer Crystal  
 Pantalla / Shade: 1627-58



**: 19843**  
 ↑ 64 cm 25,20"  
 ↔ 35 cm 13,78"  
 ↗ 23 cm 9,06"  
 ⚡ 2(E14)  
 Aplique / Wall bracket  
 Acabado / Finish: Pl. Ant.(387)  
 Peso neto / Net weight: 3,80 kg/8,37 Lb  
 Material / Materials: Bronce y Cristal scholer  
 Casted Bronze & scholerz Crystal  
 Pantalla / Shade: 1629-34



**: 19838**  
 ↑ 50 cm 19,69"  
 ↔ 40 cm 15,75"  
 ↗ 24 cm 9,45"  
 ⚡ 2(E14)  
 Aplique / Wall bracket  
 Acabado / Finish: OA/NB.(288)  
 Peso neto / Net weight: 2,54 kg/5,59 Lb  
 Material / Materials: Bronce y Swarovski elements  
 Casted Bronze & Swarovski elements  
 Pantalla / Shade: 1627-54



**: 19604-1**  
 ↓ 24 cm 9,45"  
 ↔ 46 cm 18,11"  
 ↗ 23 cm 9,06"  
 ⚡ 4 (E14)  
 Aplique / Wall bracket  
 MADE WITH SWAROVSKI® ELEMENTS  
 Acabado / Finish: O.F.(55)  
 Peso neto / Net weight: 3,22 kg/7,09 Lb  
 Material / Materials: Bronce y Swarovski elements  
 Casted Bronze & Swarovski elements



**: 19931**  
 ↓ 40 cm 15,75"  
 ↔ 28 cm 11,02"  
 ↗ 14 cm 5,51"  
 ⚡ 2 (E14)  
 Aplique / Wall bracket  
 Acabado / Finish: O.F.(55)  
 Peso neto / Net weight: 3,40 kg/7,49Lb  
 Material / Materials:  
 Bronce y cristal scholer/  
 Casted Bronze & scholer crystal



**: 19955**  
 ↓ 53 cm 20,87"  
 ↔ 36 cm 14,17"  
 ↗ 18 cm 7,09"  
 ⚡ 1 (E14)  
 Aplique / Wall bracket  
 Acabado / Finish: PLA.B.(04)  
 Peso neto / Net weight: 6,50 kg/14,32Lb  
 Material / Materials:  
 Bronce, latón y cristal scholer/  
 Casted Bronze, brass & scholer crystal



**: 19882**  
 ↑ 52 cm 20,47"  
 ↔ 50 cm 19,69"  
 ↗ 23 cm 19,06"  
 ⚡ 2(E14)  
 Aplique / Wall bracket  
 Acabado / Finish: Pla. Vi.(56)  
 Peso neto / Net weight: 5,53 kg/12,18 Lb  
 Material / Materials: Bronce y Cristal scholer  
 Casted Bronze & scholer Crystal  
 Pantalla / Shade: 1629-31



**: 19815**  
 ↑ 42 cm 16,54"  
 ↔ 40 cm 15,75"  
 ↗ 25 cm 9,84"  
 ⚡ 2(E14)  
 Aplique / Wall bracket  
 Acabado / Finish: OF(55)  
 Peso neto / Net weight: 3,58 kg/7,89Lb  
 Material / Materials: Bronce y Cristal Veneciano  
 Casted Bronze & Venetian Crystal  
 Pantalla / Shade: 1627-58



**: 19954**  
 ↑ 53 cm 20,87"  
 ↔ 45 cm 17,72"  
 ↗ 23 cm 9,06"  
 ⚡ 2(E14)  
 Aplique / Wall bracket  
 Acabado / Finish: Pla.Vi./NB(455)  
 Peso neto / Net weight: 3,10 kg/6,83 Lb  
 Material / Materials:  
 Bronce, Lágrimas Cristal scholer y tulipas en Cristal Checo  
 Casted Bronze, scholer Crystal Drops & shades Czech Crystal



**: 19959-1**  
 ↑ 48 cm 18,90"  
 ↔ 45 cm 17,72"  
 ↗ 22 cm 8,66"  
 ⚡ 2 (E14)  
 Aplique / Wall bracket  
 Acabado / Finish: PLA.B.(04)  
 Peso neto / Net weight: 6,00 kg/13,22Lb  
 Material / Materials:  
 Cristal veneciano pintado blanco al  
 horno, fabricado a la Piastra.  
 Venetian white coloured glass oven  
 dried and made to the Piastra process.



**: 19959-0**  
 ↑ 48 cm 18,90"  
 ↔ 45 cm 17,72"  
 ↗ 22 cm 8,66"  
 ⚡ 2 (E14)  
 Aplique / Wall bracket  
 Acabado / Finish: PLA.B.(04)  
 Peso neto / Net weight: 6,00 kg/13,22Lb  
 Material / Materials:  
 Cristal veneciano transparente arenado,  
 fabricado a la Piastra.  
 Venetian transparent sanded glass,  
 made to the Piastra process.



**: 19521**  
 ↑ 40 cm 15,75"  
 ↔ 24 cm 9,45"  
 ↗ 12 cm 4,72"  
 ⚡ 2 (G9)  
 Aplique / Wall bracket  
 Acabado / Finish: O.F.(55)  
 Peso neto / Net weight: 4,01 kg/8,83Lb  
 Material / Materials:  
 Bronce y cristal veneciano/  
 Casted Bronze & venetian glass





**: 19572**

↑ 24 cm 9,45"  
↔ 41 cm 16,14"  
↗ 21 cm 8,27"  
⚡ 2 (E14)  
Applique / Wall bracket  
Acabado / Finish: O.F.(55)  
Peso neto / Net weight: 2,88 kg/6,34Lb  
Material / Materials:  
Bronce y cristal veneciano/  
Casted Bronze & venetian glass



**: 19730**

↑ 22 cm 8,66"  
↔ 36 cm 14,17"  
↗ 17 cm 6,69"  
⚡ 2 (E14)  
Applique / Wall bracket  
Acabado / Finish: A.N.(49)  
Peso neto / Net weight: 2,40 kg/5,29Lb  
Material / Materials:  
Bronce y cristal veneciano/  
Casted Bronze & venetian glass



**: 19648**

↑ 19 cm 7,48"  
↔ 46 cm 18,11"  
↗ 21 cm 8,27"  
⚡ 2 (G9)  
Applique / Wall bracket  
Acabado / Finish: O.F.(55)  
Peso neto / Net weight: 2,80 kg/6,17Lb  
Material / Materials:  
Bronce y cristal veneciano/  
Casted Bronze & venetian glass



**: 18898**

↑ 20 cm 7,87"  
↔ 35 cm 13,78"  
↗ 18 cm 7,09"  
⚡ 2 (E14)  
Applique / Wall bracket  
Acabado / Finish: O.F.(55)  
Peso neto / Net weight: 3,20 kg/7,05Lb  
Material / Materials: Bronce y alabastro/  
Casted Bronze & alabaster



**: 18530**

↑ 20 cm 7,87"  
↔ 32 cm 12,60"  
↗ 16 cm 6,30"  
⚡ 1 (E14)  
Applique / Wall bracket  
Acabado / Finish: A.N.(49)  
Peso neto / Net weight: 1,01 kg/2,22 Lb  
Material / Materials: Bronce y alabastro/  
Casted Bronze & alabaster



**: 19166**

↑ 30 cm 11,81"  
↔ 21 cm 8,27"  
↗ 10 cm 3,94"  
⚡ 1 (E14)  
Applique / Wall bracket  
Acabado / Finish: O.F.(55)  
Peso neto / Net weight: 3,49 kg/7,69Lb  
Material / Materials: Bronce y alabastro/  
Casted Bronze & alabaster



**: 19496-1**

↑ 31 cm 12,20"  
↔ 32 cm 12,60"  
↗ 12 cm 4,72"  
⚡ 1 (E14)  
Applique / Wall bracket  
Acabado / Finish: O.F.(55)  
Peso neto / Net weight: 3,99 kg/8,79 Lb  
Material / Materials:  
Bronce y cristal veneciano/  
Casted Bronze & venetian glass



**: 19496-0**

↑ 31 cm 12,20"  
↔ 32 cm 12,60"  
↗ 12 cm 4,72"  
⚡ 1 (E14)  
Applique / Wall bracket  
Acabado / Finish: PLA.Vi.(56)  
Peso neto / Net weight: 3,99 kg/8,79 Lb  
Material / Materials:  
Bronce y cristal veneciano/  
Casted Bronze & venetian glass



**: 20015**

↑ 44 cm 17,32"  
↔ 46 cm 18,11"  
↗ 26 cm 10,24"  
⚡ 2 (E14)  
Applique / Wall bracket  
Acabado / Finish: CR.B.(420)  
Peso neto / Net weight: 5,60 kg/12,33 Lb  
Material / Materials:  
Latón, cristal veneciano y  
lágrimas de cristal scholer/  
Brass, venetian glass &  
scholer crystal drops



**: 20002**

↑ 48 cm 18,90"  
↔ 30 cm 11,81"  
↗ 15 cm 5,91"  
⚡ 2 (E14)  
Applique / Wall bracket  
Acabado / Finish: PLA.ANT.(387)  
Peso neto / Net weight: 4,80 kg/10,57 Lb  
Material / Materials:  
Bronce y cristal veneciano/  
Casted Bronze & venetian glass



**: 18739**

↑ 15 cm 5,91"  
↔ 42 cm 16,54"  
↗ 17 cm 6,69"  
⚡ 1 (E14)  
Applique / Wall bracket  
Acabado / Finish: O.F. PB (303)  
Peso neto / Net weight: 1,40 kg/3,08Lb  
Material / Materials: Bronce y alabastro/  
Casted Bronze & alabaster



**: 19443**

↑ 35 cm 13,78"  
↔ 21 cm 8,27"  
↗ 11 cm 4,43"  
⚡ 1 (E14)  
Applique / Wall bracket  
Acabado / Finish: O.F.(55)  
Peso neto / Net weight: 2,31 kg/5,09Lb  
Material / Materials: Bronce y alabastro/  
Casted Bronze & alabaster





**: 18156**

↑ 25 cm 9,84"  
↔ 42 cm 16,54"  
↗ 25 cm 9,84"  
⚡ 2 (E27)

Aplique / Wall bracket  
Acabado / Finish: A.N.(49)  
Peso neto / Net weight: 4,80 kg/10,57Lb  
Material / Materials: Bronce y alabastro/  
Casted Bronze & alabaster



**: 18155**

↑ 25 cm 9,84"  
↔ 20 cm 7,87"  
↗ 28 cm 11,02"  
⚡ 1 (E27)

Aplique / Wall bracket  
Acabado / Finish: A.N.(49)  
Peso neto / Net weight: 2,33 kg/5,13Lb  
Material / Materials: Bronce y alabastro/  
Casted Bronze & alabaster



**: 19968**

↑ 54 cm 21,26"  
↔ 14 cm 5,51"  
↗ 20 cm 7,87"  
⚡ 1 (E14)

Aplique / Wall bracket  
Acabado / Finish: PLA.B.(04)  
Peso neto / Net weight: 3,40 kg/7,49Lb  
Material / Materials: Bronce y cristal checo/  
Casted Bronze & czech crystal



**: 20009**

↑ 41 cm 16,14"  
↔ 28 cm 11,02"  
↗ 14 cm 5,51"  
⚡ 1 (E14)

Aplique / Wall bracket  
Acabado / Finish: PL.ANT.(387)  
Peso neto / Net weight: 3,94 kg/8,68 Lb  
Material / Materials: Latón y cristal veneciano/  
Brass & venetian glass



**: 19995**

↑ 30 cm 11,81"  
↔ 22 cm 8,66"  
↗ 15 cm 5,91"  
⚡ 2 (E14)

Aplique / Wall bracket  
Acabado / Finish: PLA.B.(04)  
Peso neto / Net weight: 1,60 kg/3,52Lb  
Material / Materials: Bronce y cristal checo/  
Casted Bronze & czech crystal



**: 18581**

↑ 47 cm 18,50"  
↔ 51 cm 20,08"  
↗ 27 cm 10,63"  
⚡ 2 (E27)

Aplique / Wall bracket  
Acabado / Finish: O.F.(55)  
Peso neto / Net weight: 6,60 kg/14,54Lb  
Material / Materials: Bronce y cristal checo/  
Casted Bronze & czech crystal



**: 19211-1**

↑ 28 cm 11,02"  
↔ 20 cm 7,87"  
↗ 35 cm 13,78"  
⚡ 2 (E14)

Aplique / Wall bracket  
Acabado / Finish: O.F.(55)  
Peso neto / Net weight:  
Material / Materials: Bronce, cristal scholer  
y tulipas en cristal checo/  
Casted Bronze, scholer crystal & shades in czech cut crystal



**: 19298-1**

↑ 72 cm 28,35"  
↔ 44 cm 17,32"  
↗ 22 cm 8,66"  
⚡ 2 (E14)

Aplique / Wall bracket  
Acabado / Finish: POE (380)  
Peso neto / Net weight: 4,60 kg/10,13 Lb  
Material / Materials: Alabastro y  
columna de madera/  
Alabaster & colum in wood



**: 20001**

↑ 53 cm 20,87"  
↔ 34 cm 13,39"  
↗ 17 cm 6,69"  
⚡ 2 (E14)

Aplique / Wall bracket  
Acabado / Finish: O.A.(231)  
Peso neto / Net weight: 5,60 kg/12,33 Lb  
Material / Materials: Bronce y cristal veneciano/  
Casted Bronze & venetian glass



**: 20032**

↑ 85 cm 33,46"  
↔ 37 cm 14,57"  
↗ 15 cm 5,91"  
⚡ 3 (E14)

Aplique / Wall bracket  
Acabado / Finish: NI.B.(516)  
Peso neto / Net weight: 4,10 kg/9,03Lb  
Material / Materials: Estructura de latón y cristal checo/  
Structure in brass & czech crystal



**: 19982**

↑ 34 cm 13,39"  
↔ 45 cm 17,72"  
↗ 10 cm 3,94"  
⚡ 2 (E14)

Aplique / Wall bracket  
Acabado / Finish: PL.B.(04)  
Peso neto / Net weight: 4,01 kg/8,83 Lb  
Material / Materials: Latón y cristal veneciano/  
Brass & venetian glass





**: 19969**

↑ 59 cm 23,23"  
↔ 32 cm 12,60"  
↗ 18 cm 7,09"  
⚡ 1 (E14)

Aplique / Wall bracket  
Acabado / Finish: OA/MAK.B.(231/486)  
Peso neto / Net weight: 8,00 kg/17,62 Lb  
Material / Materials: Latón, madera y cristal veneciano/  
Brass, wood & venetian glass



**: 19970**

↑ 54 cm 21,26"  
↔ 19 cm 7,48"  
↗ 16 cm 6,30"  
⚡ 1 (E14)

Aplique / Wall bracket  
Acabado / Finish: PL.B.(04)  
Peso neto / Net weight: 5,00 kg/11,01 Lb  
Material / Materials: Latón y cristal veneciano/  
Brass & venetian glass



**: 20006**

↑ 51 cm 20,08"  
↔ 30 cm 11,81"  
↗ 27 cm 10,63"  
⚡ 2 (E14)

Aplique / Wall bracket  
Acabado / Finish: O.F.(55)  
Peso neto / Net weight: 4,41 kg/9,71Lb  
Material / Materials:Bronce/Casted Bronze



**: 19924**

↑ 73cm 28,74"  
↔ 19cm 7,48"  
↗ 19cm 7,48"  
⚡ 1(E14)

Aplique / Wall bracket  
Acabado / Finish: PLA.B.(04)  
Peso neto / Net weight: 2,01 kg/4,43 Lb  
Material / Materials: Bronce/Casted bronze  
Pantalla/Shade: 1629-73



**: 19878**

↑ 74cm 29,13"  
↔ 42cm 16,54"  
↗ 21cm 8,27"  
⚡ 1(E14)

Aplique / Wall bracket  
Acabado / Finish: PLA.ANT/N.B.(390)  
Peso neto / Net weight: 2,40 kg/5,29 Lb  
Material / Materials: Bronce,  
latón y columna de madera/  
Casted bronze, brass & colum in wood  
Pantalla/Shade: 1629-45



**: 19852**

↑ 36cm 14,17"  
↔ 16cm 6,30"  
↗ 20cm 7,87"  
⚡ 1(E14)

Aplique / Wall bracket  
Acabado / Finish: A.N.(49)  
Peso neto / Net weight: 1,18 kg/2,60 Lb  
Material / Materials: Estructura de  
latón y pantalla de tafetan color brandy/  
Brass structure & shades in brandy colour taffetan  
Pantalla/Shade: 1629-36



**: 19925**

↑ 83cm 32,68"  
↔ 18cm 7,09"  
↗ 23cm 9,06"  
⚡ 1(E14)

Aplique / Wall bracket  
Acabado / Finish: Pla.Vi(56)  
Peso neto / Net weight: 2,00 kg/4,41 Lb  
Material / Materials: Bronce y columna de porcelana/  
Casted Bronze & colum in porcelain  
Pantalla/Shade: 1629-39



**: 19934**

↑ 87cm 34,25"  
↔ 19cm 7,48"  
↗ 20cm 7,87"  
⚡ 1(E14)

Aplique / Wall bracket  
Acabado / Finish: Pla.B/N.B.(485)  
Peso neto / Net weight: 6,00 kg/ 13,22 Lb  
Material / Materials: Latón,  
columna de madera y cristal veneciano/  
Brass, colum in wood & venetian glass



**: 20023**

↑ 65 cm 25,59"  
↔ 41 cm 16,14"  
↗ 20 cm 7,87"  
⚡ 2 (E14)

Aplique / Wall bracket  
Acabado / Finish: O.F.(55)  
Peso neto / Net weight: 7,40 kg/16,30Lb  
Material / Materials:Bronce y cristal scholer/  
Casted Bronze & scholer crystal



**: 20019-1**

↑ 54cm 21,26"  
↔ 51cm 20,08"  
↗ 28cm 11,02"  
⚡ 2(E14)

Aplique / Wall bracket  
Acabado / Finish: PLA.ANT.(387)  
Peso neto / Net weight: 7,10 kg/15,64Lb  
Material / Materials: Bronce y cristal/  
Casted bronze & glass

**: 20019**

↑ 54cm 21,26"  
↔ 47cm 18,50"  
↗ 26cm 10,24"  
⚡ 2(E14)

Aplique / Wall bracket  
Acabado / Finish: PLA.ANT.(387)  
Peso neto / Net weight: 5,20 kg/11,45Lb  
Material / Materials: Bronce/Casted bronze



**: 19270**

↑ 47 cm 18,50"  
↔ 33 cm 12,99"  
↗ 20 cm 7,87"  
⚡ 1 (E14)

Aplique / Wall bracket  
Acabado / Finish: POE/NF (378)  
Peso neto / Net weight:  
0,82 kg/1,81 Lb  
Material / Materials: Bronce, latón  
y pantalla de pergamino/  
Casted bronze, brass &  
parchment shade



**: 19261-10**

↑ 26cm 10,24"  
↔ 16cm 6,30"  
↗ 16/35cm 6.30"/13.78"  
⚡ 1(E14)

Aplique / Wall bracket  
Acabado / Finish: POE(380)  
Peso neto / Net weight:  
1,29 kg/2,84 Lb  
Material / Materials:  
Estructura metálica/  
Metal structure  
Pantalla/Shade: 1627-68



Pies  
foot lamp







**: 19879**

↑ 219cm 86,22"  
 Ø 83cm 32,68"  
 ⚡ 10 (E-14)  
 Pie / Foot Lamp  
 Acabado / Finish: OF/NB(458)  
 Peso neto / Net weight:  
 50,00kg/110,13 Lb  
 Material / Materials:  
 Bronce, columna y base  
 de madera cristal scholer/  
 Casted bronze, colum and vase  
 in wood & scholer crystal



**: 19957**

↑ 184cm 72,44"  
 Ø 50cm 19,69"  
 ⚡ 1 (halog E27)  
 Pie / Foot Lamp  
 Acabado / Finish: Pla. B (04)  
 Peso neto / Net weight:  
 43,67kg/96,19 Lb  
 Material / Materials: Columna y base  
 de madera y alabastro  
 Colum and vase in wood & alabaster



**: 19957-2**

↑ 184cm 72,44"  
 Ø 50cm 19,69"  
 ⚡ 1 (halog E27)  
 Pie / Foot Lamp  
 Acabado / Finish: Pla. B (04)  
 Peso neto / Net weight: 43,67kg/96,19 Lb  
 Material / Materials: Columna y base  
 de madera y alabastro  
 Colum and vase in wood & alabaster



**: 19348**

↑ 185cm 72,83"  
 Ø 50cm 19,69"  
 ⚡ 1 (halog E27)  
 Pie / Foot Lamp  
 Acabado / Finish: OA/NB (288)  
 Peso neto / Net weight:  
 26,02kg/57,31 Lb  
 Material / Materials:  
 Bronce, columna y  
 base de madera y alabastro  
 Casted Bronze, Colum and vase  
 in wood & alabaster



**: 19981**

↑ 191cm 75,20"  
 Ø 60cm 23,62"  
 ⚡ 1 (E27 HL)  
 Pie / Foot Lamp  
 Acabado / Finish: Pla. B /NB(485)  
 Peso neto / Net weight:  
 22,00 kg/48,46 Lb  
 Material / Materials:  
 Latón, columna de madera  
 y Cristal Veneciano  
 Brass , colum and in wood  
 & Venetian Glass



**: 19132-1**

↑ 180cm 70,87"  
 Ø 44cm 17,32"  
 ⚡ 1 (halog E27)  
 Pie / Foot Lamp  
 Acabado / Finish: POE/OF (357)  
 Peso neto / Net weight:  
 31,00kg/ 68,28Lb  
 Material / Materials:  
 Estructura metálica y alabastro  
 / Metal structure & alabaster





**: 18531**  
 Pie / Foot Lamp  
 Acabado / Finish: BROX/AN (218)  
 Peso neto / Net weight: 25,40kg/55,95 Lb  
 Material / Materials: Bronce, estructura de latón y alabastro  
 / Casted bronze, brass structure & alabaster

↑ 183cm 72,05"  
 ∅ 44cm 17,32"  
 ⚡ 1 (halog E27)



**: 18790**  
 Pie / Foot Lamp  
 Acabado / Finish: AN (49)  
 Peso neto / Net weight: 8,60kg/18,94 Lb  
 Material / Materials: Bronce, estructura de latón y alabastro  
 / Casted bronze, brass structure & alabaster  
 Pantalla/Shade: 1624-45

↑ 165cm 64,96"  
 ∅ 70cm 27,56"  
 ⚡ 1 (E27)



**: 19263-10**  
 Pie / Foot Lamp  
 Acabado / Finish: POE/PPE (392)  
 Peso neto / Net weight: 2,40kg/ 5,29Lb  
 Material / Materials: Estructura metálica  
 / Metal structure  
 Pantalla/Shade: 1627-69

↑ 138cm 54,33"  
 ↔ 25cm 9,84"  
 ↗ 25cm 9,84"  
 ⚡ 1 (E27)



**: 19898**  
 Pie / Foot Lamp  
 Acabado / Finish: PLA.Vi (56)  
 Peso neto / Net weight: 43,70kg/96,26 Lb  
 Material / Materials: Bronce y porcelana  
 / Casted bronze & porcelain  
 Pantalla/Shade: 1629-53

↑ 195cm 76,77"  
 ∅ 90cm 35,43"  
 ⚡ 5 (E14)



**: 19898-1**  
 Pie / Foot Lamp  
 Acabado / Finish: PLA.Vi (56)  
 Peso neto / Net weight: 40,70kg/89,65 Lb  
 Material / Materials: Bronce y porcelana  
 / Casted bronze & porcelain  
 Pantalla/Shade: 1629-41

↑ 195cm 76,77"  
 ∅ 90cm 35,43"  
 ⚡ 5 (E14)





**: 19759** ↑ 186cm 73,23"  
∅ 55cm 21,65"  
⚡ 2 (E27)

Pie / Foot Lamp  
Acabado / Finish: OA/NB(288)  
Peso neto / Net weight: 9,60 kg/21,15 Lb  
Material / Materials:  
Bronce, Swarovski elements  
y columna de madera  
Casted Bronze, Swarovski elements  
& colum and in wood  
Pantalla/ Shade: 1629-47



**: 19763** ↑ 176cm 69,29"  
∅ 45cm 17,72"  
⚡ 1 (E27)

Pie / Foot Lamp  
Acabado / Finish: CR/N(432)  
Peso neto / Net weight: 12,22 kg/26,92 Lb  
Material / Materials:  
Bronce, Latón  
y columna de madera  
Casted Bronze, Brass  
& colum and in wood  
Pantalla/ Shade:1629-13



**: 19864** ↑ 180cm 70,87"  
∅ 50cm 19,69"  
⚡ 2 (E27)

Pie / Foot Lamp  
Acabado / Finish: PLA.ANT/NB(390)  
Peso neto / Net weight: 14,20 kg/31,28 Lb  
Material / Materials:  
Latón y columna de madera  
Brass & colum in wood  
Pantalla/ Shade:1629-42



**: 19984** ↑ 179cm 70,47"  
∅ 45cm 17,72"  
⚡ 2 (E27)

Pie / Foot Lamp  
Acabado / Finish: CR.B.(420)  
Peso neto / Net weight: 6,45 kg/14,21 Lb  
Material / Materials:  
Latón y columna de madera  
Brass & colum in wood  
Pantalla/ Shade:1629-80



**: 19731** ↑ 184cm 72,44"  
∅ 46cm 18,11"  
⚡ 1 (E27)

Pie / Foot Lamp  
Acabado / Finish: BROX/ANI (218)  
Peso neto / Net weight: 20,60kg/45,37 Lb  
Material / Materials: Bronce,  
estructura de latón y cristal veneciano  
Casted bronze, brass structure  
& venetian glass



# Sobremesas table lamps







**: 19335**  
 ↑ 76 cm 29,92"  
 ↔ 54 cm 21,26"  
 ↗ 54 cm 21,26"  
 ⚡ 2 (E27)  
 Sobremesa / Table lamp  
 Pantalla / Shade: 1623-77  
 Acabado / Finish: OF (55)  
 Peso neto / Net weight:  
 9,75Kg / 21,48 Lb  
 Material / Materials:  
 Bronce, Madera y cerámicas  
 Casted Bronze,  
 Wood & ceramics



**: 19863**  
 ↑ 86 cm 33,86"  
 ↔ 44 cm 17,32"  
 ↗ 32 cm 12,60"  
 ⚡ 2 (E27)  
 Sobremesa / Table lamp  
 Pantalla / Shade: 1623-77  
 Acabado / Finish:  
 PLA.ANT/BAL (503)  
 Peso neto / Net weight:  
 7,00 Kg / 15,42 Lb  
 Material / Materials:  
 Bronce y Madera  
 Casted Bronze & Wood



**: 19306-1**  
 ↑ 78cm 30,71"  
 ⌀ 50cm 19,69"  
 ⚡ 2 (E27)  
 Sobremesa / Table lamp  
 Pantalla / Shade: 1627-10  
 Acabado / Finish: O.A. (231)  
 Peso neto / Net weight:  
 8,24 Kg / 18,15 Lb  
 Material / Materials:  
 Bronce y Alabastro/  
 Casted Bronze & Alabaster



**: 19239-1**  
 ↑ 94cm 37,01"  
 ⌀ 50cm 19,69"  
 ⚡ 2 (E27)  
 Sobremesa / Table lamp  
 Pantalla / Shade: 1627-10  
 Acabado / Finish: O.A. (231)  
 Peso neto / Net weight:  
 15,20Kg / 33,48Lb  
 Material / Materials:  
 Bronce y Alabastro/  
 Casted Bronze & Alabaster



**: 19989**  
 ↑ 92cm 36,22"  
 ⌀ 55cm 21,65"  
 ⚡ 2 (E27)  
 Sobremesa / Table lamp  
 Pantalla / Shade: 1629-47  
 Acabado / Finish: O.F. (55)  
 Peso neto / Net weight: 20,80 Kg / 45,81 Lb  
 Material / Materials: Bronce y Madera/  
 Casted Bronze & Wood



**: 19566**  
 ↑ 82 cm 32,28"  
 ↔ 47 cm 18,50"  
 ↗ 31 cm 12,20"  
 ⚡ 2 (E27)  
 Sobremesa / Table lamp  
 Pantalla / Shade: 1626-37  
 Acabado / Finish: OF (55)  
 Peso neto / Net weight:  
 9,20Kg / 20,26 Lb  
 Material / Materials:  
 Bronce y Madera  
 Casted Bronze & Wood



**: 19717**  
 ↑ 100cm 39,37"  
 ⌀ 55cm 21,65"  
 ⚡ 2 (E27)  
 Sobremesa / Table lamp  
 Pantalla / Shade: 1627-72  
 Acabado / Finish: OA/NB (288)  
 Peso neto / Net weight: 23,20 Kg / 51,10 Lb  
 Material / Materials:  
 Bronce, Madera y Swarovski elements  
 Casted Bronze, Wood & Swarovski elements



**: 19996**  
 ↑ 95cm 37,40"  
 ⌀ 55cm 21,65"  
 ⚡ 2 (E27)  
 Sobremesa / Table lamp  
 Pantalla / Shade: 1629-47  
 Acabado / Finish: O.A. (231)  
 Peso neto / Net weight:  
 13,45 Kg / 29,63 Lb  
 Material / Materials:  
 Bronce, Base de Madera y  
 Cristal Italiano/  
 Casted Bronze, Vase in  
 Wood & Italian glass



**: 19952**  
 ↑ 102cm 40,16"  
 ⌀ 55cm 21,65"  
 ⚡ 2 (E27)  
 Sobremesa / Table lamp  
 Pantalla / Shade: 1624-66  
 Acabado / Finish: OA/NB (288)  
 Peso neto / Net weight: 11,81 Kg / 26,01 Lb  
 Material / Materials:  
 Bronce, Base de Madera y Cristal Italiano  
 Casted Bronze, Vase in Wood & Italian glass



**: 19229**  
 ↑ 71cm 27,95"  
 ⌀ 45cm 17,72"  
 ⚡ 2 (E27)  
 Sobremesa / Table lamp  
 Pantalla / Shade: 1624-66  
 Acabado / Finish: O.A. (231)  
 Peso neto / Net weight: 4,80 Kg / 10,57 Lb  
 Material / Materials:  
 Bronce, Base de Madera y Cristal Italiano  
 Casted Bronze, Vase in Wood & Italian glass





**: 19887**

↑ 105cm 41,34"  
∅ 55cm 21,65"  
⚡ 2 (E27)  
Sobremesa / Table lamp  
Pantalla / Shade: 1629-47  
Acabado / Finish: O.A./B./NB.(456)  
Peso neto / Net weight: 10,70 Kg / 23,57 Lb  
Material / Materials: Bronce,  
Madera y Porcelana/  
Casted Bronze, Wood & Porcelain



**: 20025**

↑ 102cm 40,16"  
∅ 55cm 21,65"  
⚡ 2 (E27)  
Sobremesa / Table lamp  
Pantalla / Shade: 1629-47  
Acabado / Finish: PLA.B. (04)  
Peso neto / Net weight: 11,80 Kg / 25,99 Lb  
Material / Materials: Bronce y Cristal Italiano/  
Casted Bronze & Italian Glass



**: 19900**

↑ 94cm 37,01"  
∅ 60cm 21,62"  
⚡ 2 (E27)  
Sobremesa / Table lamp  
Pantalla / Shade: 1629-57  
Acabado / Finish: O.F./NB (458)  
Peso neto / Net weight:  
18,10 Kg / 39,87 Lb  
Material / Materials:  
Bronce, Columna de Madera  
y Cristal Scholer  
Casted Bronze, Colum in Wood  
& Scholer Crystal



**: 19978**

↑ 112cm 44,09"  
∅ 55cm 21,65"  
⚡ 2 (E27)  
Sobremesa / Table lamp  
Pantalla / Shade: 1629-81  
Acabado / Finish: PLA.ANT. (387)  
Peso neto / Net weight: 10,80 Kg / 23,79 Lb  
Material / Materials: Bronce, Cristal Italiano  
y Mármol Travertino  
Casted Bronze, Italian Glass  
& Travertino Marble



**: 20027**

↑ 107cm 42,13"  
∅ 55cm 21,65"  
⚡ 2 (E27)  
Sobremesa / Table lamp  
Pantalla / Shade: 1629-78  
Acabado / Finish: O.A.(231)  
Peso neto / Net weight: 15,40 Kg / 33,92 Lb  
Material / Materials: Bronce y Cristal Italiano/  
Casted Bronze & Italian Glass



**: 19455**

↑ 93cm 36,61"  
∅ 50cm 19,69"  
⚡ 2 (E27)  
Sobremesa / Table lamp  
Pantalla / Shade: 1629-10  
Acabado / Finish: O.A. (231)  
Peso neto / Net weight: 6,10 Kg / 13,44 Lb  
Material / Materials: Bronce y Base de Madera/  
Casted Bronze & Vase in Wood



**: 19901**

↑ 88cm 34,65"  
∅ 50cm 19,69"  
⚡ 2 (E27)  
Sobremesa / Table lamp  
Pantalla / Shade: 1629-33  
Acabado / Finish: PLA.VI. (56)  
Peso neto / Net weight: 6,00Kg / 13,22 Lb  
Material / Materials: Bronce & Cristal Italiano/  
Casted Bronze & Italian Glass



Pantalla / Shade: 1629-32  
Acabado / Finish: O.F. (55)



**: 19698**

↑ 120cm 47,24"  
∅ 50cm 19,69"  
⚡ 2 (E27)  
Sobremesa / Table lamp  
Pantalla / Shade: 1627-72  
Acabado / Finish: O.F. (55)  
Peso neto / Net weight:  
12,65 Kg / 27,86 Lb  
Material / Materials:  
Bronce, Cristal Scholer y Base de Madera  
Casted Bronze, Scholer Crystal  
& Vase in Wood



**: 19951**

↑ 92cm 36,22"  
∅ 50cm 19,69"  
⚡ 2 (E27)  
Sobremesa / Table lamp  
Pantalla / Shade: 1629-33  
Acabado / Finish: PLA.ANT. (387)  
Peso neto / Net weight: 10,30 Kg / 22,69 Lb  
Material / Materials: Bronce, Cristal Italiano y Base de Mármol  
Travertino/ Casted Bronze, Italian Glass & Vase in Marble



Pantalla / Shade: 1629-76  
Acabado / Finish: O.A. (231)



**: 19976**

↑ 96cm 37,80"  
∅ 55cm 21,65"  
⚡ 2 (E27)  
Sobremesa / Table lamp  
Pantalla / Shade: 1629-47  
Acabado / Finish: PLA.B. (04)  
Peso neto / Net weight: 11,61 Kg / 25,57Lb  
Material / Materials: Bronce, Cristal Italiano, Latón y Base de Madera/  
Casted Bronze, Italian Glass, Brass & Vase in Wood





**: 19844**

↑ 70cm 27,56"  
∅ 40cm 15,75"  
⚡ 3 (E14)

Sobremesa / Table lamp  
Pantalla / Shade: 1627-58  
Acabado / Finish: OA/NB (288)  
Peso neto / Net weight: 8,70 Kg / 19,16 Lb  
Material / Materials: Bronce, Cristal scholer,  
Latón y Base de Mármol/ Casted Bronze,  
scholer Crystal, Brass & Vase in Marble



**: 19832**

↑ 93cm 36,61"  
∅ 50cm 19,65"  
⚡ 2 (E27)

Sobremesa / Table lamp  
Pantalla / Shade: 1629-33  
Acabado / Finish: PLA.ANT/NB(390)  
Peso neto / Net weight:  
5,90 Kg / 13,00 Lb  
Material / Materials:  
Bronce, Latón y Base de Madera/  
Casted Bronze, Brass & Vase in Wood



**: 19697**

↑ 86cm 33,86"  
∅ 50cm 19,69"  
⚡ 2 (E27)

Sobremesa / Table lamp  
Pantalla / Shade: 1629-85  
Acabado / Finish: OA/NB (288)  
Peso neto / Net weight: 4,20Kg / 9,25 Lb  
Material / Materials: Bronce, Madera  
y Swarovski elements  
Casted Bronze, Wood & Swarovski elements



**: 19899**

↑ 101cm 39,76"  
∅ 50cm 19,69"  
⚡ 2 (E27)

Sobremesa / Table lamp  
Pantalla / Shade: 1629-33  
Acabado / Finish: PLA.Vi. (56)  
Peso neto / Net weight:  
4,63 Kg / 10,20 Lb  
Material / Materials:  
Bronce y porcelana  
Casted Bronze & Porcelain



**: 19922**

↑ 80cm 31,50"  
∅ 45cm 17,72"  
⚡ 2 (E14)

Sobremesa / Table lamp  
Pantalla / Shade: 1629-43  
Acabado / Finish: PLA.Vi. (56)  
Peso neto / Net weight:  
3,92 Kg / 8,63 Lb  
Material / Materials: Bronce y Latón  
Casted Bronze & Brass



**: 19865**

↑ 90cm 35,43"  
∅ 45cm 17,72"  
⚡ 2 (E27)

Sobremesa / Table lamp  
Pantalla / Shade: 1629-43  
Acabado / Finish: PLA.ANT/NB(390)  
Peso neto / Net weight:  
5,69 Kg / 12,53 Lb  
Material / Materials: Latón y  
Columna de Madera/  
Brass & Colum in Wood



**: 19305**

↑ 80cm 31,50"  
∅ 50cm 19,69"  
⚡ 2 (E27)

Sobremesa / Table lamp  
Pantalla / Shade: 1627-10  
Acabado / Finish: O.F./NST(100)  
Peso neto / Net weight:  
10,02Kg / 22,07Lb  
Material / Materials: Estructura metálica  
y Base de Madera/  
Metal structure & Vase in Wood



**: 19410**

↑ 47cm 18,50"  
∅ 18cm 7,09"  
⚡ 1 (E14)

Sobremesa / Table lamp  
Pantalla / Shade: 1629-44  
Acabado / Finish:  
POE/PPE (392)  
Peso neto / Net weight:  
1,20Kg / 2,64 Lb  
Material / Materials:  
Estructura metálica  
Metal structure



**: 20033**

↑ 75cm 29,53"  
∅ 38cm 14,96"  
⚡ 1 (E14)

Sobremesa / Table lamp  
Pantalla / Shade: 1629-83  
Acabado / Finish: PLA.B. (04)  
Peso neto / Net weight: 3,30Kg / 7,27 Lb  
Material / Materials: Bronce,  
Cristal Italiano y Latón/  
Casted Bronze, Italian Glass & Brass



**: 19977**

↑ 105cm 41,34"  
∅ 55cm 21,65"  
⚡ 2 (E27)

Sobremesa / Table lamp  
Pantalla / Shade: 1629-77  
Acabado / Finish: PLA.B. (04)  
Peso neto / Net weight:  
11,70 Kg / 25,77 Lb  
Material / Materials: Latón,  
Columna de Cristal Italiano  
y Base de Madera  
Brass, Colum in Italian Glass  
& Vase in Wood





**: 19933**  
↑ 80cm 31,50"  
∅ 28cm 11,02"  
⚡ 1 (E14)

Sobremesa / Table lamp  
Pantalla / Shade: 1629-70  
Acabado / Finish: CR.B/NB(432)  
Peso neto / Net weight: 2,50 Kg / 5,51 Lb  
Material / Materials:  
Latón y Columna de Madera/  
Brass & Colum in Wood



**: 19910**  
↑ 77cm 30,31"  
∅ 30cm 11,81"  
⚡ 1 (E14)

Sobremesa / Table lamp  
Pantalla / Shade: 1629-67  
Acabado / Finish: PL.B/BAL(469)  
Peso neto / Net weight: 1,80 Kg / 3,69 Lb  
Material / Materials:  
Latón y Columna de Madera/  
Brass & Colum in Wood



**: 18985**  
↑ 54cm 21,26"  
∅ 25cm 9,84"  
⚡ 1 (E27)

Sobremesa / Table lamp  
Pantalla / Shade: 1624-82  
Acabado / Finish: A.N. (49)  
Peso neto / Net weight: 2,20 Kg / 4,85 Lb  
Material / Materials:  
Estructura metálica/ Metal structure



**: 19853**  
↑ 36cm 14,17"  
∅ 16cm 6,30"  
⚡ 1 (E14)

Sobremesa / Table lamp  
Pantalla / Shade: 1629-36  
Acabado / Finish: A.N. (49)  
Peso neto / Net weight:  
1,32 Kg / 2,91 Lb  
Material / Materials:  
Estructura de latón y  
pantalla de tafetan color brandy/  
Brass structure &  
shade brandy colour taffetan



**: 19867**  
↑ 64cm 25,20"  
∅ 23cm 9,06"  
⚡ 1 (E14)

Sobremesa / Table lamp  
Pantalla / Shade: 1629-39  
Acabado / Finish: PL.B (04)  
Peso neto / Net weight:  
1,45 Kg / 3,19 Lb  
Material / Materials:  
Estructura metálica  
Metal structure



**: 19511**  
↑ 55 cm 21,65"  
↔ 26 cm 10,24"  
↗ 11 cm 4,33"  
⚡ 1 (E14)

Sobremesa / Table lamp  
Acabado / Finish: AN (49)  
Peso neto / Net weight:  
2,40 kg/5,29 Lb  
Material / Materials:  
Bronce y Cristal Veneciano  
Casted bronze & Venetian Crystal



**: 19262-10**  
↑ 55cm 21,65"  
↔ 20cm 7,87"  
↗ 20cm 7,87"  
⚡ 1 (E14)

Sobremesa / Table lamp  
Pantalla / Shade: 1627-68  
Acabado / Finish: POE/PPE (392)  
Peso neto / Net weight: 1,20 Kg / 2,64Lb  
Material / Materials:  
Estructura metálica/ Metal structure



**: 19935**  
↑ 80cm 31,50"  
∅ 37cm 14,57"  
⚡ 1 (E14)

Sobremesa / Table lamp  
Acabado / Finish: PLA.B. (04)  
Peso neto / Net weight:  
30,40 Kg / 66,96 Lb  
Material / Materials:  
Base de Madera y Alabastro  
Vase in Wood & Alabaster



**: 19935-2**  
↑ 80cm 31,50"  
∅ 37cm 14,57"  
⚡ 1 (E14)

Sobremesa / Table lamp  
Acabado / Finish: PLA.B. (04)  
Peso neto / Net weight:  
30,40 Kg / 66,96 Lb  
Material / Materials:  
Base de Madera y Alabastro  
Vase in Wood & Alabaster



# Acabados / Finishes



**AN**  
Art Nouveau  
*Art Nouveau*  
SAME FINISH AS 19851 (page 154)



**OA**  
Oro Anticuario  
*Antique Gold Plated*  
SAME FINISH AS 18933 (page 11)



**BE**  
Bronceado Envejecido  
*Aged Bronze*  
SAME FINISH AS 18431 (page 63)



**PLA. VI.**  
Plata Vieja  
*Old Silver Plated*  
SAME FINISH AS 19848 (page 97)



**PL.B**  
Plata Brillo  
*Bright Silver*  
SAME FINISH AS 19950 (page 143)



**DB**  
Dorado Brillo  
*Bright Gold*



**OF**  
Oro Frances  
*French Gold*  
SAME FINISH AS 19559 (page 9)



**POE**  
Pan de Oro Envejecido  
*Gold Leaf*  
SAME FINISH AS 19426 (page 198)



**BROX**  
Bronceado Óxido  
*Oxide Bronze*



**CR**  
Cromo  
*Chrome*  
SAME FINISH AS (page 123)



**PPE**  
Pan de Plata Envejecido  
*Silver Leaf*  
SAME FINISH AS 19905 (page 157)



**PLA.ANT**  
Plata Anticuario  
*Antique Silver Plated*  
SAME FINISH AS 19965 (page 141)



**D.ETR**  
Dorado Etrusco  
*Etruscan Gold*



# Índice / List

Referencia <i>Reference</i>	Capítulo <i>Chapter</i>	Página <i>Page</i>	Referencia <i>Reference</i>	Capítulo <i>Chapter</i>	Página <i>Page</i>	Referencia <i>Reference</i>	Capítulo <i>Chapter</i>	Página <i>Page</i>
650	Royal Heritage	20	14194	Decoración/Accessories	185	18897	Recopilación/Summary	195
2400	Royal Heritage	8	14195	Decoración/Accessories	183	18898	Royal Heritage	103
2531	Royal Heritage	23	14196	Decoración/Accessories	185	18898	Recopilación/Summary	211
2531	Recopilación/Summary	203	14197	Decoración/Accessories	176	18933	Royal Heritage	11
14018	Decoración/Accessories	183	18079	Royal Heritage	111	18939	Royal Heritage	102
14021	Decoración/Accessories	180	18155	Royal Heritage	111	18958-1	Royal Heritage	106
14044-1	Decoración/Accessories	183	18155	Recopilación/Summary	212	18985	Recopilación/Summary	232
14121-1	Decoración/Accessories	178	18156	Royal Heritage	111	19011	Royal Heritage	108
14124	Decoración/Accessories	177	18156	Recopilación/Summary	212	19011	Recopilación/Summary	195
14128	Decoración/Accessories	173	18430	Royal Heritage	62	19012	Recopilación/Summary	203
14131	Decoración/Accessories	173	18431	Royal Heritage	63	19066	Royal Heritage	64
14139	Decoración/Accessories	185	18490	Recopilación/Summary	207	19067	Royal Heritage	65
14140	Decoración/Accessories	179	18522	Royal Heritage	113	19069	Royal Heritage	64
14141	Decoración/Accessories	175	18523	Royal Heritage	113	19069	Recopilación/Summary	205
14142	Decoración/Accessories	181	18523	Recopilación/Summary	195	19084	Royal Heritage	25
14148-1	Decoración/Accessories	187	18529	Royal Heritage	99	19084	Recopilación/Summary	202
14154	Decoración/Accessories	184	18530	Royal Heritage	112	19085	Royal Heritage	25
14155-1	Decoración/Accessories	175	18530	Recopilación/Summary	211	19085	Recopilación/Summary	202
14158	Decoración/Accessories	172	18531	Royal Heritage	112	19100	Royal Heritage	22
14159	Decoración/Accessories	175	18531	Recopilación/Summary	220	19100	Recopilación/Summary	204
14160	Decoración/Accessories	187	18547	Royal Heritage	112	19103	Recopilación/Summary	207
14161	Decoración/Accessories	186	18555	Royal Heritage	69	19112	Royal Heritage	42
14162	Decoración/Accessories	187	18576	Romantic	161	19132-1	Recopilación/Summary	219
14163	Decoración/Accessories	177	18581	Recopilación/Summary	212	19137	Recopilación/Summary	206
14164	Decoración/Accessories	182	18693	Royal Heritage	17	19158	Recopilación/Summary	207
14166	Decoración/Accessories	179	18694	Royal Heritage	109	19166	Recopilación/Summary	211
14167	Decoración/Accessories	179	18696	Royal Heritage	108	19180	Recopilación/Summary	195
14169	Decoración/Accessories	177	18738	Royal Heritage	109	19197	Royal Heritage	21
14171	Decoración/Accessories	183	18738	Recopilación/Summary	195	19209_1	Royal Heritage	47
14174	Decoración/Accessories	175	18739	Royal Heritage	109	19210	Royal Heritage	45
14175	Decoración/Accessories	174	18739	Recopilación/Summary	211	19210	Recopilación/Summary	192
14176	Decoración/Accessories	176	18761	Royal Heritage	19	19211-1	Royal Heritage	45
14180	Decoración/Accessories	185	18790	Recopilación/Summary	220	19211-1	Recopilación/Summary	212
14184	Decoración/Accessories	173	18812	Royal Heritage	66	19227-1	Royal Heritage	45
14185	Decoración/Accessories	179	18819	Royal Heritage	104	19229	Recopilación/Summary	227
14186	Decoración/Accessories	181	18833	Royal Heritage	94	19230	Royal Heritage	22
14187	Decoración/Accessories	181	18845	Royal Heritage	105	19230	Recopilación/Summary	203
14188	Decoración/Accessories	173	18878	Royal Heritage	107	19239-1	Recopilación/Summary	227
14191	Decoración/Accessories	177	18896	Royal Heritage	103	19258-10	Gallery	169
14192	Decoración/Accessories	181	18897	Royal Heritage	102	19259-10	Gallery	167



<b>Referencia</b> <i>Reference</i>	<b>Capítulo</b> <i>Chapter</i>	<b>Página</b> <i>Page</i>	<b>Referencia</b> <i>Reference</i>	<b>Capítulo</b> <i>Chapter</i>	<b>Página</b> <i>Page</i>	<b>Referencia</b> <i>Reference</i>	<b>Capítulo</b> <i>Chapter</i>	<b>Página</b> <i>Page</i>
19261-10	Gallery	167	19443	Recopilación/Summary	211	19572-1	Recopilación/Summary	210
19261-10	Recopilación/Summary	215	19453	Royal Heritage	60	19601-1	Royal Heritage	39
19262-10	Gallery	168	19455	Recopilación/Summary	229	19602-1	Royal Heritage	38
19262-10	Recopilación/Summary	232	19462	Recopilación/Summary	199	19602-1	Recopilación/Summary	192
19263-10	Gallery	168	19464	Royal Heritage	76	19603-1	Royal Heritage	38
19263-10	Recopilación/Summary	220	19464	Recopilación/Summary	194	19603-1	Recopilación/Summary	19
19270	Recopilación/Summary	215	19465	Royal Heritage	79	19604-1	Royal Heritage	38
19298-1	Recopilación/Summary	212	19470	Royal Heritage	68	19604-1	Recopilación/Summary	209
19305	Recopilación/Summary	230	19491	Royal Heritage	61	19612-1	Royal Heritage	89
19306-1	Recopilación/Summary	227	19492	Royal Heritage	60	19612-1	Recopilación/Summary	192
19307	Recopilación/Summary	198	19492	Recopilación/Summary	203	19613	Royal Heritage	87
19308	Recopilación/Summary	198	19493-1	Royal Heritage	85	19614	Royal Heritage	87
19328	Royal Heritage	42	19494-1	Royal Heritage	84	19615	Royal Heritage	86
19328	Recopilación/Summary	205	19495	Royal Heritage	84	19615	Recopilación/Summary	193
19335	Recopilación/Summary	226	19495	Recopilación/Summary	193	19625	Recopilación/Summary	199
19347	Royal Heritage	23	19495-1	Royal Heritage	84	19627	Royal Heritage	98
19347	Recopilación/Summary	203	19495-1	Recopilación/Summary	193	19648	Royal Heritage	86
19348	Recopilación/Summary	219	19496	Royal Heritage	85	19648	Recopilación/Summary	210
19358	Royal Heritage	59	19496	Recopilación/Summary	210	19649	Romantic	160
19375	Royal Heritage	43	19496-1	Royal Heritage	85	19669	Royal Heritage	82
19383	Recopilación/Summary	206	19496-1	Recopilación/Summary	210	19670	Royal Heritage	83
19384	Royal Heritage	78	19508	Romantic	163	19671	Royal Heritage	82
19385-1	Royal Heritage	77	19509	Romantic	162	19671	Recopilación/Summary	205
19385-1	Recopilación/Summary	194	19510	Romantic	163	19673	Recopilación/Summary	206
19386	Royal Heritage	76	19510	Recopilación/Summary	197	19687	Royal Heritage	92
19386	Recopilación/Summary	204	19511	Romantic	162	19689	Romantic	166
19386-1	Royal Heritage	76	19511	Recopilación/Summary	232	19696	Royal Heritage	91
19386-1	Recopilación/Summary	204	19521	Royal Heritage	87	19697	Recopilación/Summary	230
19387	Royal Heritage	77	19521	Recopilación/Summary	209	19698	Recopilación/Summary	228
19388	Recopilación/Summary	207	19522	Royal Heritage	88	19704	Royal Heritage	90
19397	Recopilación/Summary	202	19524-1	Royal Heritage	89	19705	Royal Heritage	90
19398	Recopilación/Summary	202	19524-1	Recopilación/Summary	192	19705	Recopilación/Summary	192
19401	Recopilación/Summary	193	19555	Recopilación/Summary	199	19717	Recopilación/Summary	226
19410	Recopilación/Summary	230	19556	Recopilación/Summary	199	19728	Romantic	164
19426	Recopilación/Summary	198	19557	Recopilación/Summary	199	19729	Romantic	165
19427	Recopilación/Summary	198	19558	Recopilación/Summary	199	19729	Recopilación/Summary	197
19440-1	Royal Heritage	101	19559	Royal Heritage	9	19730	Romantic	165
19442	Royal Heritage	100	19560-1	Royal Heritage	37	19730	Recopilación/Summary	210
19442	Recopilación/Summary	195	19566	Recopilación/Summary	226	19731	Romantic	165
19443	Royal Heritage	211	19572-1	Royal Heritage	89	19731	Recopilación/Summary	223



# Índice / List

Referencia <i>Reference</i>	Capítulo <i>Chapter</i>	Página <i>Page</i>	Referencia <i>Reference</i>	Capítulo <i>Chapter</i>	Página <i>Page</i>	Referencia <i>Reference</i>	Capítulo <i>Chapter</i>	Página <i>Page</i>
19759	Recopilación/Summary	222	19866	Romantic	155	19901	Royal Heritage	41
19763	Recopilación/Summary	222	19867	Romantic	155	19901	Recopilación/Summary	228
19766	Recopilación/Summary	205	19867	Recopilación/Summary	233	19904	Romantic	158
19767	Recopilación/Summary	207	19872	Royal Heritage	13	19904-1	Romantic	159
19777	Royal Heritage	9	19875	Royal Heritage	41	19905	Romantic	157
19788	Royal Heritage	44	19875-1	Royal Heritage	40	19905-1	Romantic	157
19800	Royal Heritage	81	19876	Royal Heritage	54	19907	Recopilación/Summary	196
19813	Royal Heritage	73	19876	Recopilación/Summary	193	19908	Recopilación/Summary	196
19814	Royal Heritage	72	19878	Recopilación/Summary	215	19910	Recopilación/Summary	232
19815	Royal Heritage	72	19879	Royal Heritage	49	19921	Royal Heritage	35
19815	Recopilación/Summary	208	19879	Recopilación/Summary	218	19921	Recopilación/Summary	204
19827	Royal Heritage	55	19880	Royal Heritage	24	19922	Recopilación/Summary	231
19828	Royal Heritage	54	19880	Recopilación/Summary	202	19923	Recopilación/Summary	206
19829	Royal Heritage	49	19881	Royal Heritage	24	19924	Recopilación/Summary	215
19832	Recopilación/Summary	230	19881	Recopilación/Summary	202	19925	Royal Heritage	114
19833-1	Royal Heritage	34	19882	Recopilación/Summary	208	19925	Recopilación/Summary	214
19834	Royal Heritage	48	19884	Royal Heritage	52	19927	Royal Heritage	70
19838	Royal Heritage	54	19884-1	Royal Heritage	53	19928	Royal Heritage	18
19840	Royal Heritage	57	19887	Royal Heritage	52	19929	Royal Heritage	18
19841	Royal Heritage	53	19887	Recopilación/Summary	228	19929	Recopilación/Summary	204
19841	Recopilación/Summary	193	19889	Royal Heritage	16	19930	Royal Heritage	95
19842	Royal Heritage	57	19890	Royal Heritage	51	19931	Recopilación/Summary	209
19842	Recopilación/Summary	208	19891	Royal Heritage	50	19933	Recopilación/Summary	232
19843	Royal Heritage	56	19891	Recopilación/Summary	205	19934	Recopilación/Summary	214
19843	Recopilación/Summary	208	19892	Royal Heritage	50	19935	Recopilación/Summary	233
19844	Royal Heritage	56	19892	Recopilación/Summary	205	19935-2	Recopilación/Summary	233
19844	Recopilación/Summary	230	19893	Royal Heritage	35	19940	Gallery	146
19848	Royal Heritage	97	19894	Royal Heritage	33	19941	Gallery	146
19849	Royal Heritage	48	19895	Royal Heritage	29	19941	Recopilación/Summary	197
19849	Recopilación/Summary	204	19896	Royal Heritage	116	19942	Gallery	147
19851	Romantic	154	19897	Royal Heritage	115	19943	Gallery	147
19852	Romantic	154	19897-1	Royal Heritage	114	19943	Recopilación/Summary	197
19852	Recopilación/Summary	215	19898	Royal Heritage	115	19944	Recopilación/Summary	196
19853	Romantic	154	19898	Recopilación/Summary	221	19949	Gallery	149
19853	Recopilación/Summary	233	19898-1	Royal Heritage	115	19950	Gallery	143
19859	Recopilación/Summary	203	19898-1	Recopilación/Summary	221	19951	Gallery	144
19860	Royal Heritage	36	19899	Royal Heritage	117	19951	Recopilación/Summary	229
19863	Recopilación/Summary	226	19899	Recopilación/Summary	231	19952	Recopilación/Summary	227
19864	Recopilación/Summary	223	19900	Royal Heritage	48	19954	Royal Heritage	33
19865	Recopilación/Summary	231	19900	Recopilación/Summary	228	19954	Recopilación/Summary	208



<b>Referencia</b> <i>Reference</i>	<b>Capítulo</b> <i>Chapter</i>	<b>Página</b> <i>Page</i>	<b>Referencia</b> <i>Reference</i>	<b>Capítulo</b> <i>Chapter</i>	<b>Página</b> <i>Page</i>	<b>Referencia</b> <i>Reference</i>	<b>Capítulo</b> <i>Chapter</i>	<b>Página</b> <i>Page</i>
19955	Gallery	146	19987	Royal Heritage	30	20018	Gallery	131
19955	Recopilación/Summary	209	19988	Royal Heritage	31	20018-1	Gallery	131
19957	Recopilación/Summary	218	19989	Recopilación/Summary	226	20019	Gallery	132
19957-2	Recopilación/Summary	218	19990	Recopilación/Summary	196	20019	Recopilación/Summary	214
19958	Gallery	150	19991	Recopilación/Summary	193	20019-1	Gallery	132
19959	Gallery	151	19992	Recopilación/Summary	196	20019-1	Recopilación/Summary	214
19959	Recopilación/Summary	209	19993	Recopilación/Summary	198	20020	Royal Heritage	26
19959-1	Gallery	151	19994	Recopilación/Summary	198	20021	Royal Heritage	27
19959-1	Recopilación/Summary	209	19995	Gallery	144	20022	Royal Heritage	15
19960	Gallery	145	19995	Recopilación/Summary	213	20023	Royal Heritage	15
19962	Gallery	138	19996	Recopilación/Summary	227	20023	Recopilación/Summary	214
19963	Gallery	140	19997	Royal Heritage	14	20025	Recopilación/Summary	228
19963	Recopilación/Summary	194	19998	Gallery	136	20027	Recopilación/Summary	229
19964	Gallery	140	19999	Gallery	137	20028	Gallery	129
19964	Recopilación/Summary	194	20000	Gallery	148	20028-1	Gallery	128
19965	Gallery	141	20001	Gallery	137	20029-1	Gallery	129
19966	Recopilación/Summary	196	20001	Recopilación/Summary	213	20029-1	Recopilación/Summary	204
19967	Recopilación/Summary	196	20002	Recopilación/Summary	210	20030	Gallery	121
19968	Gallery	144	20005	Gallery	136	20030	Recopilación/Summary	194
19968	Recopilación/Summary	213	20005	Recopilación/Summary	197	20031	Gallery	133
19969	Recopilación/Summary	214	20006	Royal Heritage	11	20032	Gallery	133
19970	Recopilación/Summary	214	20006	Recopilación/Summary	214	20032	Recopilación/Summary	213
19971	Gallery	147	20007	Gallery	120	20033	Recopilación/Summary	231
19972	Gallery	148	20008	Gallery	121	20034	Gallery	134
19973	Royal Heritage	93	20008	Recopilación/Summary		20035	Recopilación/Summary	199
19974	Recopilación/Summary	193	20009	Gallery	120	20036	Recopilación/Summary	199
19975	Recopilación/Summary	193	20009	Recopilación/Summary	213	20037-1	Royal Heritage	127
19976	Recopilación/Summary	229	20010	Gallery	122	20038	Royal Heritage	80
19977	Recopilación/Summary	231	20011	Gallery	123	20039	Royal Heritage	75
19978	Recopilación/Summary	229	20012	Gallery	123			
19979	Gallery	137	20012	Recopilación/Summary	194			
19980	Gallery	136	20013	Gallery	122			
19980	Recopilación/Summary	197	20013	Recopilación/Summary	194			
19981	Recopilación/Summary	219	20014	Gallery	124			
19982	Recopilación/Summary	213	20015	Gallery	124			
19983	Recopilación/Summary	206	20015	Recopilación/Summary	210			
19984	Recopilación/Summary	223	20016	Gallery	125			
19985	Gallery	151	20016-1	Gallery	125			
19985	Recopilación/Summary	197	20017	Gallery	130			
19986	Royal Heritage	28	20017-1	Gallery	130			





© MARINER, S.A. - 2013  
© MARINER, S.A. - 2000 - 2013

Todos los diseños que se contienen en este catálogo son originales  
y exclusivos de MARINER, S.A.

*All designs mentioned in this catalogue are original  
and exclusive of MARINER, S.A.*

---

Debido a los procesos de impresión, los colores que aparecen en este catálogo deben de considerarse aproximados, no exactos.  
Queda prohibido cualquier tipo de reproducción total o parcial de las imágenes, textos, ilustraciones y grafismos del catálogo.  
*Due to the impression processes, the colors that appear in this catalogue, should be consider as approximate, not exact.  
It is prohibited any total or partial reproduction of the images, texts, illustrations and graphics of this catalogue.*

---

*Lighting Made in Europe - All Models Patent Internationaly*